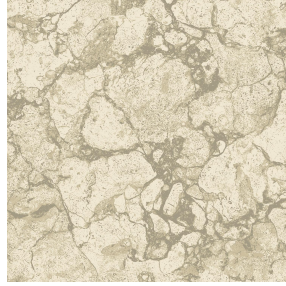




**COMET BPI 00**  
Printing support



**CARRARA Ficelle 09**  
Print pattern



# Printing support **COMET BPI 00** Print pattern **CARRARA Ficelle 09**

Blackout Print Support

## Technical properties



Flame retardant

**Applications** Roman blinds - Panel curtains - Curtains

**Composition** 100% polyester with white flocked acrylic backing

**Weight** 390 g/m<sup>2</sup>

**Width** 280 cm

**Fabric direction** Room High Direction

**Fitting** ↔ 0.0 cm ↓ 0.0 cm

**Maintenance advice**     

**Label**

**Minimum order** 25 linear(s) meter(s)



Visual not taking into account the printing medium, the final rendering may vary according to the chosen medium.

## Technical characteristics

Flame retardant

EN13773 : 2003 Class 1 / BS 5867 TYPE B / B1 / IMO PASS / UNI 8456 / 9174 Classe Uno

Resilience

Dimensional Stability (%)

Warp 0

Weft 0

Breaking Elongation

Warp 38

Weft 38

Breaking load (daN)

Warp 170

Weft 120

# Print pattern CARRARA



CARRARA Céladon 135



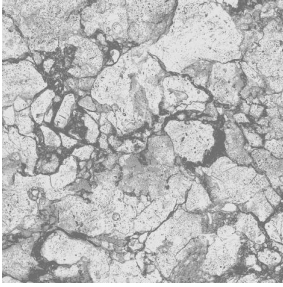
CARRARA Perle 96



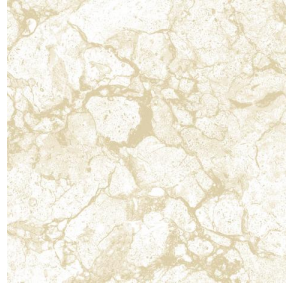
CARRARA Lin 11



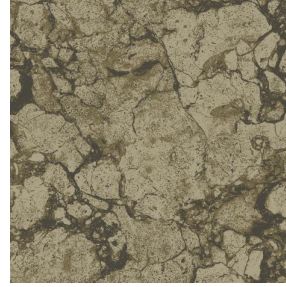
CARRARA Vieux rose 64



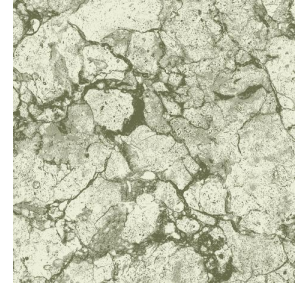
CARRARA Gris 97



CARRARA Naturel 26



CARRARA Chamois 111



CARRARA Absinthe 132

**drapilux**  
By Sotexpro

DRAPILUX GmbH - Hafenstraße 3, 77694 Kehl - Deutschland

Non-contractual photos and colors - Indicative fitting - Fitting may vary depending on support selected