



COMET BPI 00
Printing support



SONG Opéra 104
Print pattern



Printing support **COMET BPI 00** Print pattern **SONG Opéra 104**

Blackout Print Support

Technical properties



Flame retardant

Applications Roman blinds - Panel curtains - Curtains

Composition 100% polyester with white flocked acrylic backing

Weight 390 g/m²

Width 280 cm

Fabric direction Room High Direction

Fitting ↔ 35.0 cm ↓ 35.0 cm

Maintenance advice     

Label

Minimum order 25 linear(s) meter(s)



Visual not taking into account the printing medium, the final rendering may vary according to the chosen medium.

Technical characteristics

Flame retardant

EN13773 : 2003 Class 1 / BS 5867 TYPE B / B1 / IMO PASS / UNI 8456 / 9174 Classe Uno

Resilience

Dimensional Stability (%)

Warp 0

Weft 0

Breaking Elongation

Warp 38

Weft 38

Breaking load (daN)

Warp 170

Weft 120

Print pattern SONG



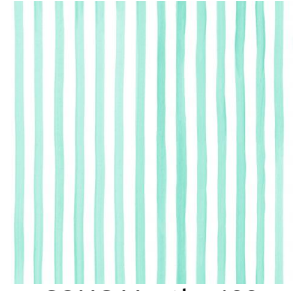
SONG Agrume 69



SONG Framboise 81



SONG Lierre 124



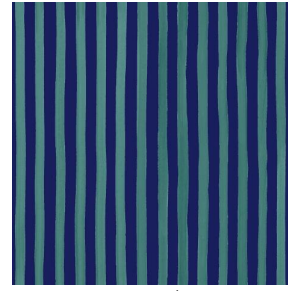
SONG Menthe 122



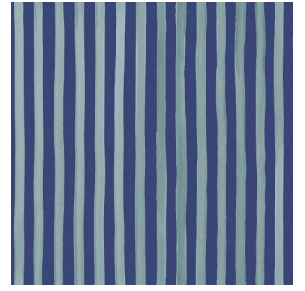
SONG Naturel 26



SONG Navy 120



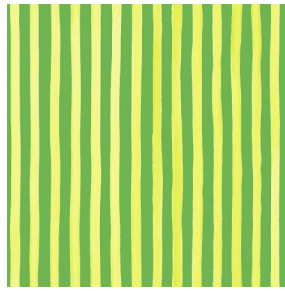
SONG Océan 91



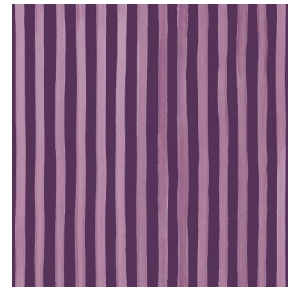
SONG Orage 123



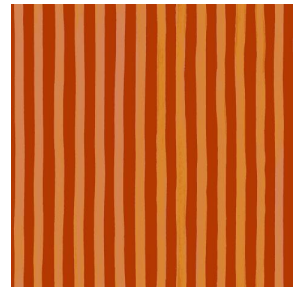
SONG Orange 15



SONG Prairie 125



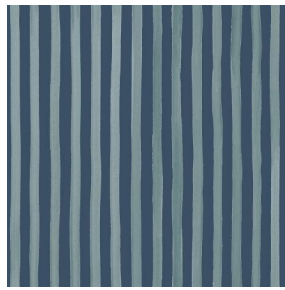
SONG Prune 84



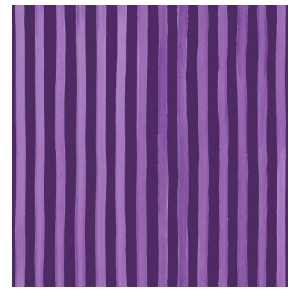
SONG Sanguine 05



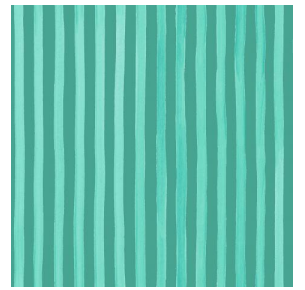
SONG Soleil 127



SONG Titanium 98



SONG Violine 105



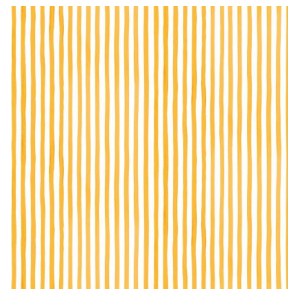
SONG Jade 116



SONG Sapin 126



SONG Tilleul 103



SONG maïs 37

drapilux
By Sotexpro

DRAPILUX GmbH - Hafenstraße 3, 77694 Kehl - Deutschland

Non-contractual photos and colors - Indicative fitting - Fitting may vary depending on support selected