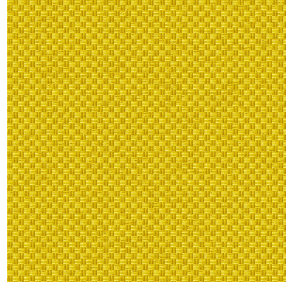


**BORNEO BPI 00**  
Printing support



**CHARLOTTE Maïs 37**  
Print pattern



## Printing support **BORNEO BPI 00** Print pattern **CHARLOTTE Maïs 37**

Technical properties



Flame retardant



Thermal



Acoustic

Applications Roman blinds - Curtains

Composition 100% FR polyester

Weight 440 g/m<sup>2</sup>

Width 280 cm

Fabric direction Room high or standard direction

Fitting ↔ 0.0 cm ↓ 0.0 cm

Maintenance advice    

Label OEKO-TEX STANDARD 100

Minimum order 25 linear(s) meter(s)



Visual not taking into account the printing medium, the final rendering may vary according to the chosen medium.

## Technical characteristics

|                 |   |
|-----------------|---|
| Flame retardant | M1 / B1 / IMO PASS / UNI 8456 / 9174 Classe Uno   |
| Acoustic        | Noise reduction coefficient (NRC) : <b>0.89</b>   |
| Optical index   | Light reflexion : <b>60 %</b><br>Light absorption : <b>40 %</b><br>Light transmission : <b>0 %</b>  |
| Thermal index   | Solar reflexion : <b>56 %</b><br>Solar absorption : <b>44 %</b><br>Solar transmission : <b>0 %</b><br>UV transmission : <b>0 %</b><br>Gtot : <b>Gt 39 % Fc 65 %</b>   |
| Resilience      | Lightfastness (units Class/8) <b>6</b><br>Dimensional Stability (%)<br>Warp <b>-0.5</b><br>Weft <b>0</b><br>Breaking Elongation<br>Warp <b>31</b><br>Weft <b>0</b><br>Breaking load (daN)<br>Warp <b>130</b><br>Weft <b>250</b> |

# Print pattern CHARLOTTE



CHARLOTTE Absinthe  
132



CHARLOTTE Anis 62



CHARLOTTE Beige 63



CHARLOTTE Bouteille  
101



CHARLOTTE Brume 47



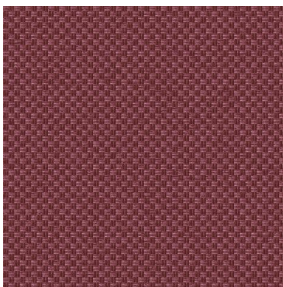
CHARLOTTE Cerise 66



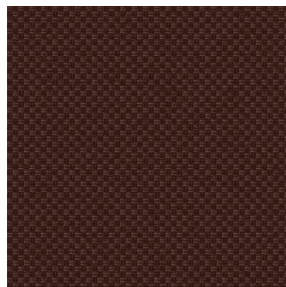
CHARLOTTE Chamois  
111



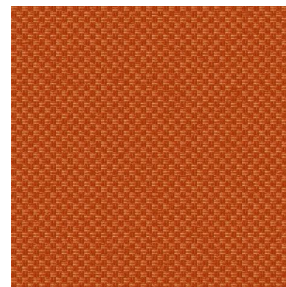
CHARLOTTE Chataigne  
55



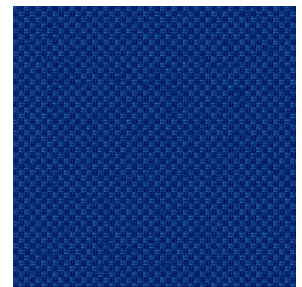
CHARLOTTE Chaudron  
118



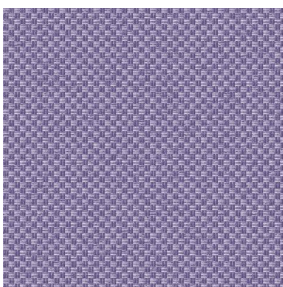
CHARLOTTE Chocolat  
70



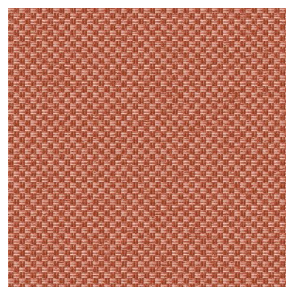
CHARLOTTE Citrouille  
136



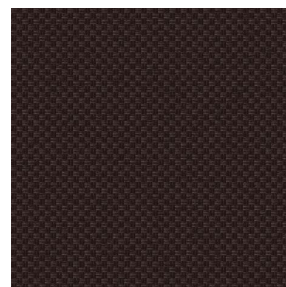
CHARLOTTE Cobalt 114



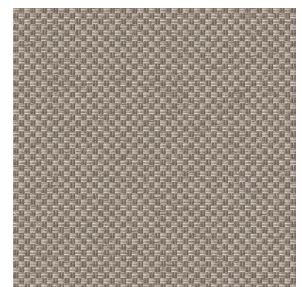
CHARLOTTE Crepuscule  
45



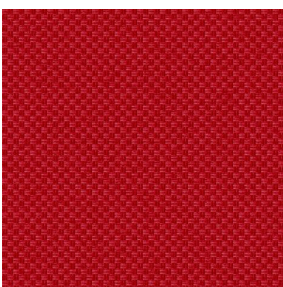
CHARLOTTE Cuivre 50



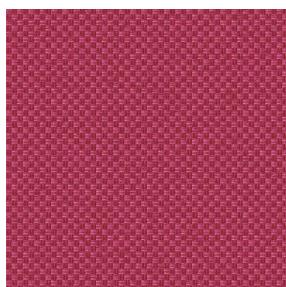
CHARLOTTE Ebene 124



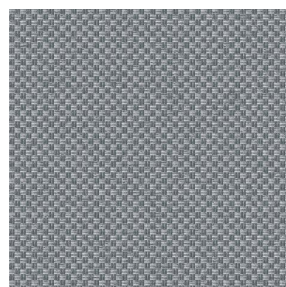
CHARLOTTE Ficelle 09



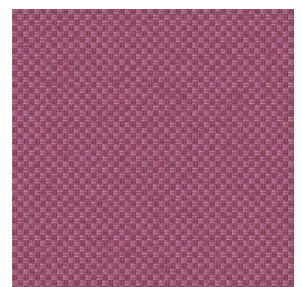
CHARLOTTE Fiesta 131



CHARLOTTE Grenat 56



CHARLOTTE Gris 97



CHARLOTTE Hortensia  
134

**drapilux**  
By Sotexpro

DRAPILUX GmbH - Hofenstraße 3, 77694 Kehl - Deutschland

Non-contractual photos and colors - Indicative fitting - Fitting may vary depending on support selected

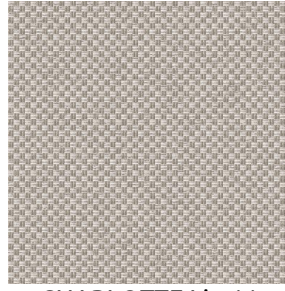
# Print pattern CHARLOTTE



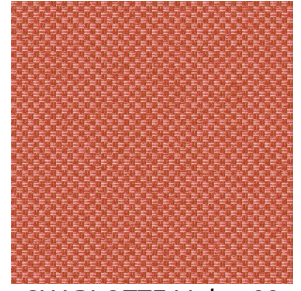
CHARLOTTE Lagon 110



CHARLOTTE Lilas 19



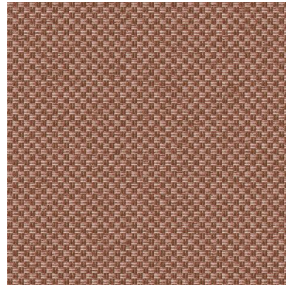
CHARLOTTE Lin 11



CHARLOTTE Melon 22



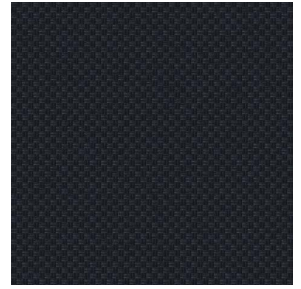
CHARLOTTE Menthe  
122



CHARLOTTE Mordore  
133



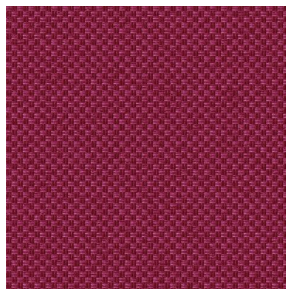
CHARLOTTE Mousse 92



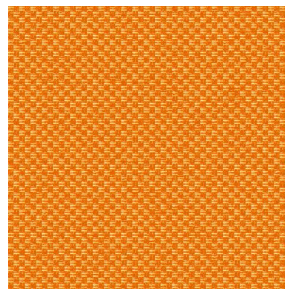
CHARLOTTE Noir 10



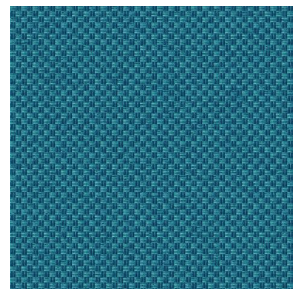
CHARLOTTE Océan 91



CHARLOTTE Opéra 104



CHARLOTTE Orange 15



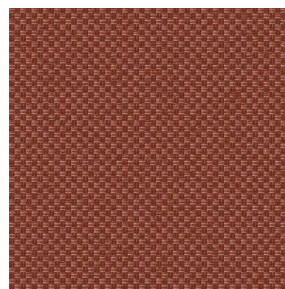
CHARLOTTE Pacifique  
54



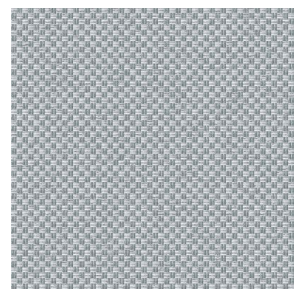
CHARLOTTE Prairie 125



CHARLOTTE Printemps  
130



CHARLOTTE Sienne 29



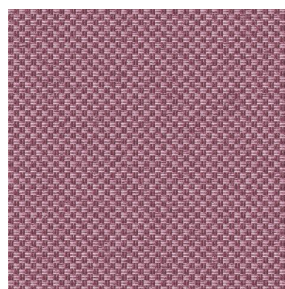
CHARLOTTE Souris 31



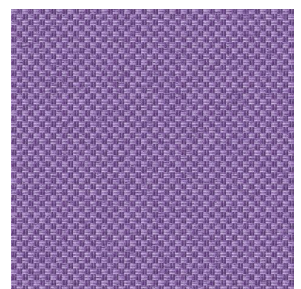
CHARLOTTE Terre 107



CHARLOTTE Tilleul 103



CHARLOTTE Vieux rose  
64



CHARLOTTE Violine 105

**drapilux**  
By Sotexpro

DRAPILUX GmbH - Hafenstraße 3, 77694 Kehl - Deutschland

Non-contractual photos and colors - Indicative fitting - Fitting may vary depending on support selected