



**BORNEO BPI 00**  
Printing support



**RIVE Océan 91**  
Print pattern



## Printing support **BORNEO BPI 00** Print pattern **RIVE Océan 91**

Technical properties



Flame retardant



Thermal



Acoustic

Applications Roman blinds - Curtains

Composition 100% FR polyester

Weight 440 g/m<sup>2</sup>

Width 280 cm

Fabric direction Room high or standard direction

Fitting ↔ 0.0 cm ↓ 0.0 cm

Maintenance advice    

Label OEKO-TEX STANDARD 100

Minimum order 25 linear(s) meter(s)



Visual not taking into account the printing medium, the final rendering may vary according to the chosen medium.

## Technical characteristics

Flame retardant	M1 / B1 / IMO PASS / UNI 8456 / 9174 Classe Uno
Acoustic	Noise reduction coefficient (NRC) : <b>0.89</b>
Optical index	Light reflexion : <b>60 %</b>
	Light absorption : <b>40 %</b>
	Light transmission : <b>0 %</b>
Thermal index	Solar reflexion : <b>56 %</b>
	Solar absorption : <b>44 %</b>
	Solar transmission : <b>0 %</b>
	UV transmission : <b>0 %</b>
	Gtot : <b>Gt 39 % Fc 65 %</b>
Resilience	Lightfastness (units Class/8) <b>6</b>
	Dimensional Stability (%)
	Warp <b>-0.5</b>
	Weft <b>0</b>
	Breaking Elongation
	Warp <b>31</b>
	Weft <b>0</b>
	Breaking load (daN)
	Warp <b>130</b>
Weft <b>250</b>	

## Print pattern RIVE



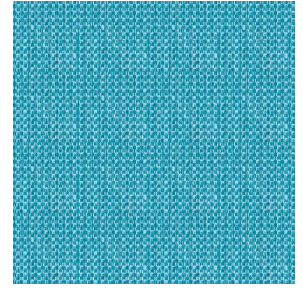
RIVE Fuchsia 33



RIVE Bleu 41



RIVE Jaune 46



RIVE Turquoise 53



RIVE Sable 67



RIVE Taupe 95



RIVE Gris 97

**drapilux**  
By Sotexpro

DRAPILUX GmbH - Hafenstraße 3, 77694 Kehl - Deutschland

Non-contractual photos and colors - Indicative fitting - Fitting may vary depending on support selected