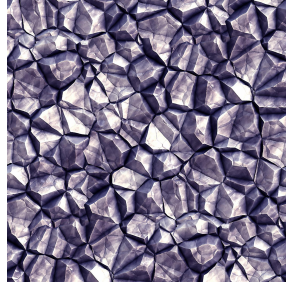




**BOREAL BPI 00**  
Printing support



**SAPHIR Violine 105**  
Print pattern



## Printing support **BOREAL BPI 00** Print pattern **SAPHIR Violine 105**

Dimout support for digital printing

### Technical properties



Flame retardant



Thermal



Acoustic

**Applications** Roman blinds - Valences - Lining - Bed runners - Curtains




**Composition** 100% FR polyester

**Weight** 260 g/m<sup>2</sup>

**Width** 280 cm

**Fabric direction** Room High Direction

**Fitting** ↔ 0.0 cm ↓ 0.0 cm

**Maintenance advice**     

**Label** OEKO-TEX STANDARD 100

**Minimum order** 25 linear(s) meter(s)



Visual not taking into account the printing medium, the final rendering may vary according to the chosen medium.

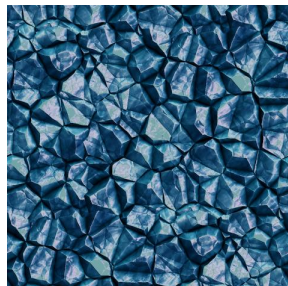
## Technical characteristics

Flame retardant	M1 / B1 / IMO PASS / UNI 8456 / 9174 Classe Uno
Acoustic	Noise reduction coefficient (NRC) : <b>0.88</b>
Resilience	Dimensional Stability (%)
	Warp <b>0</b>
	Weft <b>0</b>
	Breaking Elongation
	Warp <b>17</b>
	Weft <b>27</b>
	Breaking load (daN)
	Warp <b>87</b>
	Weft <b>110</b>

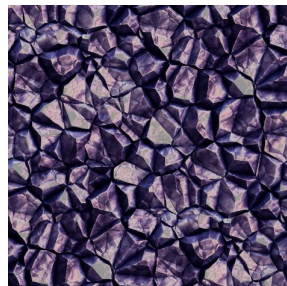
# Print pattern SAPHIR



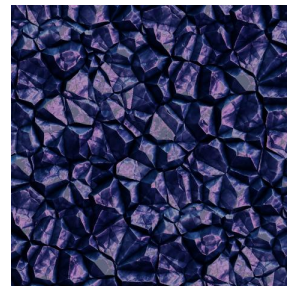
SAPHIR Naturel 26



SAPHIR Gentiane 16



SAPHIR Aubergine 27



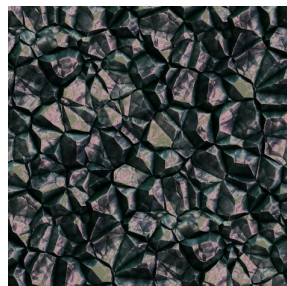
SAPHIR Opéra 104



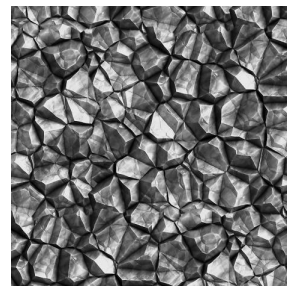
SAPHIR Absinthe 132



SAPHIR Hortensia 134



SAPHIR Reflet 140



SAPHIR Acier 18

**drapilux**  
By Sotexpro

DRAPILUX GmbH - Hafenstraße 3, 77694 Kehl - Deutschland

Non-contractual photos and colors - Indicative fitting - Fitting may vary depending on support selected