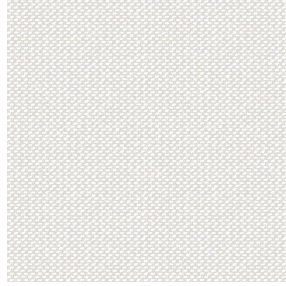
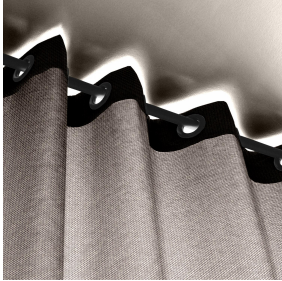




**BOREAL BPI 00**  
Printing support



**METIS Perle 96**  
Print pattern



## Printing support **BOREAL BPI 00** Print pattern **METIS Perle 96**

Dimout support for digital printing

### Technical properties



Flame retardant



Thermal



Acoustic

**Applications** Roman blinds - Valences - Lining - Bed runners - Curtains

**Composition** 100% FR polyester

**Weight** 260 g/m<sup>2</sup>

**Width** 280 cm

**Fabric direction** Room High Direction

**Fitting** ↔ 0.0 cm ↓ 0.0 cm

**Maintenance advice**     

**Label** OEKO-TEX STANDARD 100

**Minimum order** 25 linear(s) meter(s)



Visual not taking into account the printing medium, the final rendering may vary according to the chosen medium.

## Technical characteristics

Flame retardant	M1 / B1 / IMO PASS / UNI 8456 / 9174 Classe Uno
Acoustic	Noise reduction coefficient (NRC) : <b>0.88</b>
Resilience	Dimensional Stability (%)
	Warp <b>0</b>
	Weft <b>0</b>
	Breaking Elongation
	Warp <b>17</b>
	Weft <b>27</b>
	Breaking load (daN)
	Warp <b>87</b>
	Weft <b>110</b>

# Print pattern METIS



METIS Gentiane 16



METIS Absinthe 132



METIS Noir 10



METIS Citrouille 136



METIS Chanvre 72



METIS Gris 97



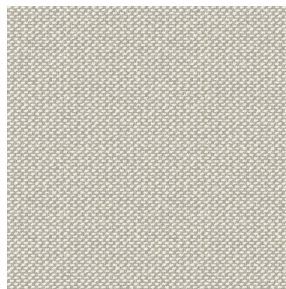
METIS Bergamote 121



METIS Violine 105



METIS Céladon 135



METIS Lin 11



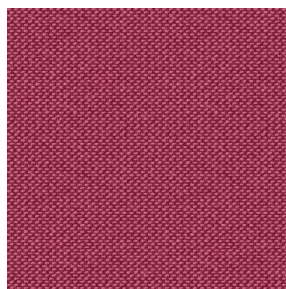
METIS Sienne 29



METIS Lagon 110



METIS Cobalt 114



METIS Framboise 81



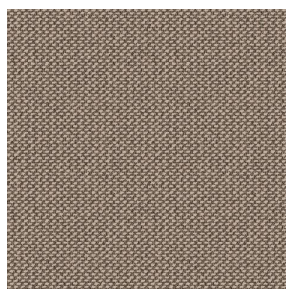
METIS Abricot 08



METIS Chamois 111



METIS Ivoire 115



METIS Ficelle 09



METIS Rose 129



METIS Parme 79

**drapilux**  
By Sotexpro

DRAPILUX GmbH - Hofenstraße 3, 77694 Kehl - Deutschland

Non-contractual photos and colors - Indicative fitting - Fitting may vary depending on support selected

## Print pattern METIS



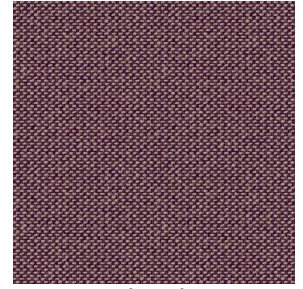
METIS Cactus 36



METIS Hortensia 134



METIS Naturel 26



METIS Chaudron 118