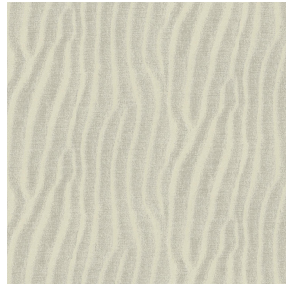




BOREAL BPI 00
Printing support



SABLE Lin 11
Print pattern



Printing support **BOREAL BPI 00** Print pattern **SABLE Lin 11**

Dimout support for digital printing

Technical properties



Flame retardant



Thermal



Acoustic

Applications Roman blinds - Valences - Lining - Bed runners - Curtains

Composition 100% FR polyester

Weight 260 g/m²

Width 280 cm

Fabric direction Room High Direction

Fitting ↔ 0.0 cm ↓ 0.0 cm

Maintenance advice

Label OEKO-TEX STANDARD 100

Minimum order 25 linear(s) meter(s)



Visual not taking into account the printing medium, the final rendering may vary according to the chosen medium.

Technical characteristics

Flame retardant	M1 / B1 / IMO PASS / UNI 8456 / 9174 Classe Uno
Acoustic	Noise reduction coefficient (NRC) : 0.88
Resilience	Dimensional Stability (%)
	Warp 0
	Weft 0
	Breaking Elongation
	Warp 17
	Weft 27
	Breaking load (daN)
	Warp 87
	Weft 110

Print pattern SABLE



SABLE Rose 129



SABLE Sable 67



SABLE Absinthe 132



SABLE Ivoire 115



SABLE Noir 10



SABLE Souris 31



SABLE Gris 97



SABLE Jasmin 74

drapilux
By Sotexpro

DRAPILUX GmbH - Hafenstraße 3, 77694 Kehl - Deutschland

Non-contractual photos and colors - Indicative fitting - Fitting may vary depending on support selected