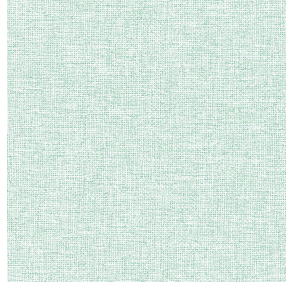




BOREAL BPI 00
Printing support



MUNA jade 116
Print pattern

Printing support **BOREAL BPI 00** Print pattern **MUNA jade 116**

Dimout support for digital printing

Technical properties



Flame retardant



Thermal



Acoustic

Applications Roman blinds - Valences - Lining - Bed runners - Curtains

Composition 100% FR polyester

Weight 260 g/m²

Width 280 cm

Fabric direction Room High Direction

Fitting ↔ cm ↓ cm

Maintenance advice

Label OEKO-TEX STANDARD 100

Minimum order 25 linear(s) meter(s)



Visual not taking into account the printing medium, the final rendering may vary according to the chosen medium.

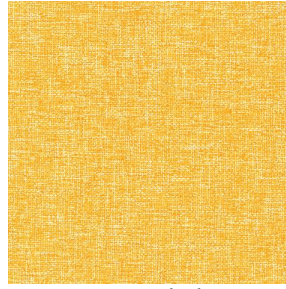
Technical characteristics

| | |
|-----------------|---|
| Flame retardant | M1 / B1 / IMO PASS / UNI 8456 / 9174 Classe Uno |
| Acoustic | Noise reduction coefficient (NRC) : 0.88 |
| Resilience | Dimensional Stability (%) |
| | Warp 0 |
| | Weft 0 |
| | Breaking Elongation |
| | Warp 17 |
| | Weft 27 |
| | Breaking load (daN) |
| | Warp 87 |
| | Weft 110 |

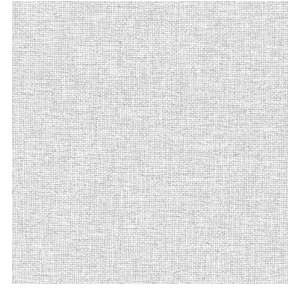
Print pattern MUNA



MUNA Cactus 36



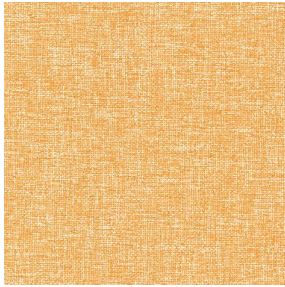
MUNA soleil 90



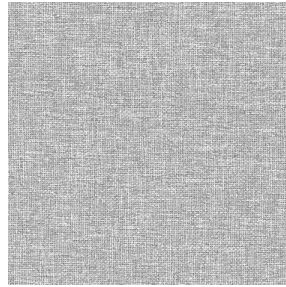
MUNA gris 97



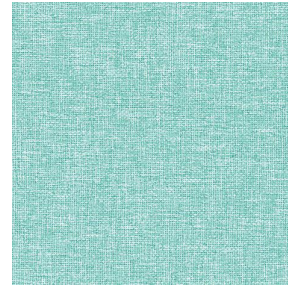
MUNA lin 11



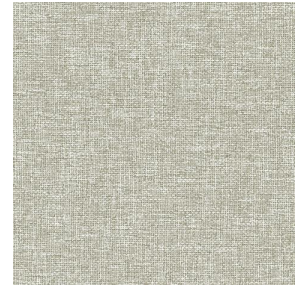
MUNA Melon 22



MUNA souris 31



MUNA lagon 110



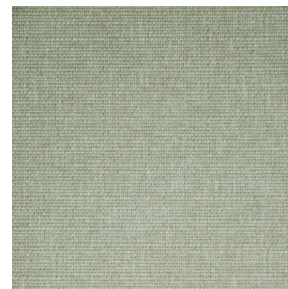
MUNA terre 107



MUNA céladon 135



MUNA Coco 142



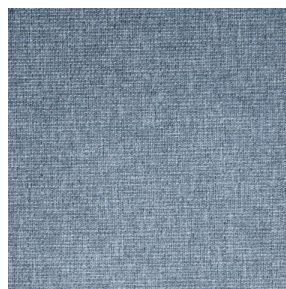
MUNA Sable 67



MUNA Saumon 143



MUNA Sisal 140



MUNA Tourterelle 138



MUNA Ardoise 87



MUNA Tilleul 103



MUNA Chanvre 72



MUNA Graphite 77



MUNA Olive 61



MUNA Lierre 124

drapilux
By Sotexpro

DRAPILUX GmbH - Hafenstraße 3, 77694 Kehl - Deutschland

Non-contractual photos and colors - Indicative fitting - Fitting may vary depending on support selected

Print pattern MUNA



MUNA Indigo 144



MUNA Sienne 29



MUNA Rouge 21



MUNA Saphir 106



MUNA Violine 105



MUNA Titanium 98



MUNA Acier 18