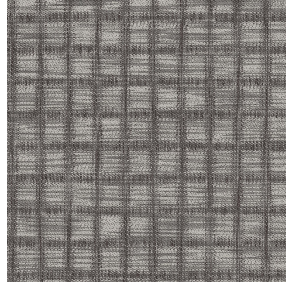




BOREAL BPI 00
Printing support



ECUME Taupe 95
Print pattern



Visual not taking into account the printing medium, the final rendering may vary according to the chosen medium.

Printing support **BOREAL BPI 00** Print pattern **ECUME Taupe 95**

Dimout support for digital printing

Technical properties



Flame retardant



Thermal



Acoustic

Applications Roman blinds - Valences - Lining - Bed runners - Curtains

Composition 100% FR polyester

Weight 260 g/m²

Width 145 cm

Fabric direction Standard Direction

Fitting ↔ 20.0 cm ↓ 22.0 cm

Maintenance advice     

Label OEKO-TEX STANDARD 100

Minimum order 25 linear(s) meter(s)

Technical characteristics

| | | |
|---------------------|---|------------|
| Flame retardant | M1 / B1 / IMO PASS / UNI 8456 / 9174 Classe Uno | |
| Acoustic | Noise reduction coefficient (NRC) : 0.88 | |
| Resilience | Dimensional Stability (%) | |
| | Warp | 0 |
| | Weft | 0 |
| | Breaking Elongation | |
| | Warp | 17 |
| | Weft | 27 |
| Breaking load (daN) | Warp | 87 |
| | Weft | 110 |

Print pattern ECUME



ECUME Turquoise 53

drapilux
By Sotexpro

DRAPILUX GmbH - Hafenstraße 3, 77694 Kehl - Deutschland

Non-contractual photos and colors - Indicative fitting - Fitting may vary depending on support selected