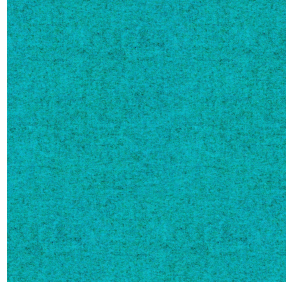




BOREAL BPI 00
Printing support



ELAINA Turquoise 53
Print pattern



Printing support **BOREAL BPI 00** Print pattern **ELAINA Turquoise 53**

Dimout support for digital printing

Technical properties



Flame retardant



Thermal



Acoustic

Applications Roman blinds - Valences - Lining - Bed runners - Curtains

Composition 100% FR polyester

Weight 260 g/m²

Width 145 cm

Fabric direction Standard Direction

Fitting ↔ 0.0 cm ↓ 0.0 cm

Maintenance advice     

Label OEKO-TEX STANDARD 100

Minimum order 25 linear(s) meter(s)



Visual not taking into account the printing medium, the final rendering may vary according to the chosen medium.

Technical characteristics

Flame retardant	M1 / B1 / IMO PASS / UNI 8456 / 9174 Classe Uno	
Acoustic	Noise reduction coefficient (NRC) : 0.88	
Resilience	Dimensional Stability (%)	
	Warp	0
	Weft	0
	Breaking Elongation	
	Warp	17
	Weft	27
	Breaking load (daN)	
	Warp	87
Weft	110	

Print pattern ELAINA



ELAINA Gris 91



ELAINA Violine 105



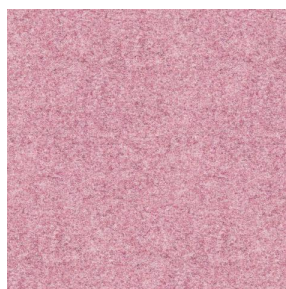
ELAINA Ocre 03



ELAINA Lin 11



ELAINA Bergamote 121



ELAINA Rose 129



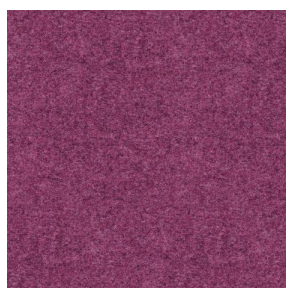
ELAINA Pacifique 54



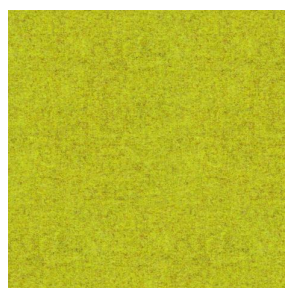
ELAINA Beige 63



ELAINA Céladon 135



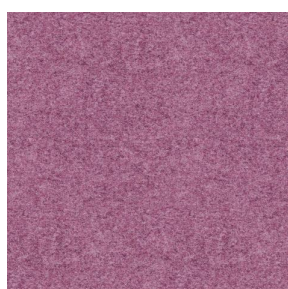
ELAINA Saphir 106



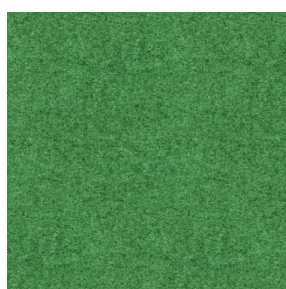
ELAINA Anis 62



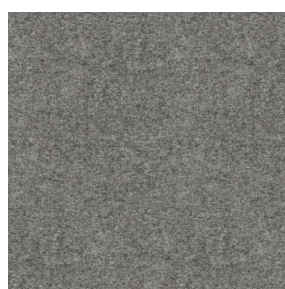
ELAINA Rouge 21



ELAINA Hortensia 134



ELAINA Prairie 125



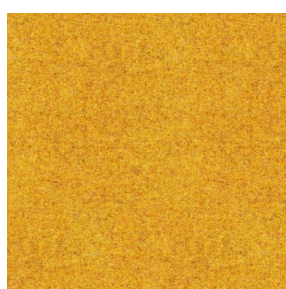
ELAINA Graphite 77



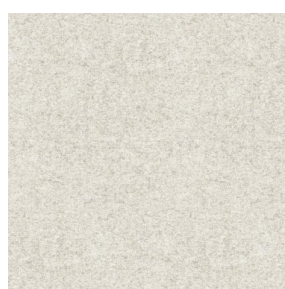
ELAINA Lierre 124



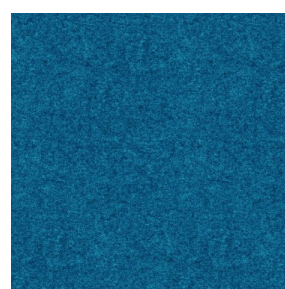
ELAINA Naturel 26



ELAINA Genêt 06



ELAINA Ivoire 115



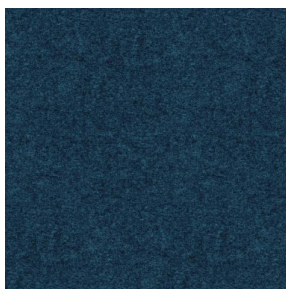
ELAINA Gentiane 16

drapilux
By Sotexpro

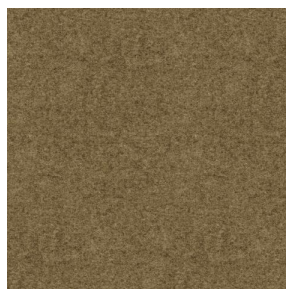
DRAPILUX GmbH - Hofenstraße 3, 77694 Kehl - Deutschland

Non-contractual photos and colors - Indicative fitting - Fitting may vary depending on support selected

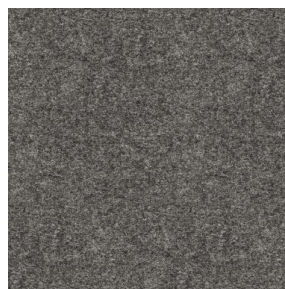
Print pattern ELAINA



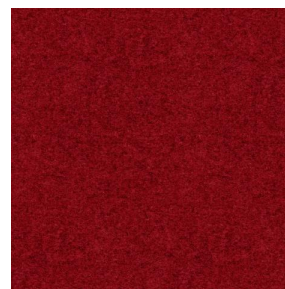
ELAINA Navy 120



ELAINA Chamois 111



ELAINA Anthracite 38



ELAINA Fiesta 131

drapilux
By Sotexpro

DRAPILUX GmbH - Hafenstraße 3, 77694 Kehl - Deutschland

Non-contractual photos and colors - Indicative fitting - Fitting may vary depending on support selected