



**BOREAL BPI 00**  
Printing support



**ANATOLE lin 11**  
Print pattern



## Printing support **BOREAL BPI 00** Print pattern **ANATOLE lin 11**

Dimout support for digital printing

### Technical properties



Flame retardant



Thermal



Acoustic

**Applications** Roman blinds - Valences - Lining - Bed runners - Curtains

**Composition** 100% FR polyester

**Weight** 260 g/m<sup>2</sup>

**Width** 145 cm

**Fabric direction** Standard Direction

**Fitting** ↔ cm ↓ cm

**Maintenance advice**     

**Label** OEKO-TEX STANDARD 100

**Minimum order** 25 linear(s) meter(s)



Visual not taking into account the printing medium, the final rendering may vary according to the chosen medium.

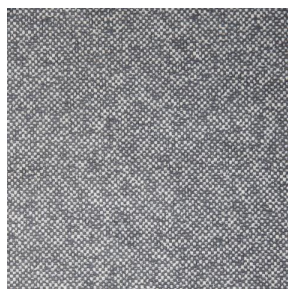
## Technical characteristics

Flame retardant	M1 / B1 / IMO PASS / UNI 8456 / 9174 Classe Uno
Acoustic	Noise reduction coefficient (NRC) : <b>0.88</b>
Resilience	Dimensional Stability (%)
	Warp <b>0</b>
	Weft <b>0</b>
	Breaking Elongation
	Warp <b>17</b>
	Weft <b>27</b>
	Breaking load (daN)
	Warp <b>87</b>
	Weft <b>110</b>

# Print pattern ANATOLE



ANATOLE Naturel 26



ANATOLE Ficelle 09



ANATOLE Celadon 135



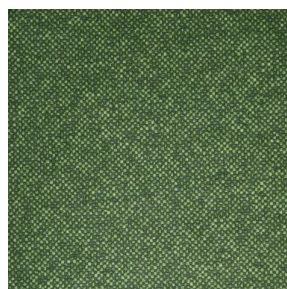
ANATOLE Océan 91



ANATOLE Titanium 98



ANATOLE Cactus 36



ANATOLE mousse 92



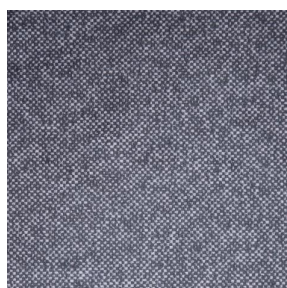
ANATOLE Or 94



ANATOLE Chaudron  
118



ANATOLE Amarante  
108



ANATOLE Taupe 95