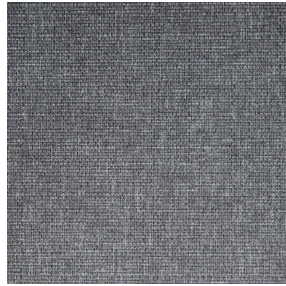




**BOREAL BPI 00**  
Printing support



**MUNA Graphite 77**  
Print pattern



## Printing support **BOREAL BPI 00** Print pattern **MUNA Graphite 77**

Dimout support for digital printing

### Technical properties



Flame retardant



Thermal



Acoustic

**Applications** Roman blinds - Valences - Lining - Bed runners - Curtains

**Composition** 100% FR polyester

**Weight** 260 g/m<sup>2</sup>

**Width** 145 cm

**Fabric direction** Standard Direction

**Fitting** ↔ cm ↓ cm

**Maintenance advice**

**Label** OEKO-TEX STANDARD 100

**Minimum order** 25 linear(s) meter(s)



Visual not taking into account the printing medium, the final rendering may vary according to the chosen medium.

## Technical characteristics

Flame retardant	M1 / B1 / IMO PASS / UNI 8456 / 9174 Classe Uno
Acoustic	Noise reduction coefficient (NRC) : <b>0.88</b>
Resilience	Dimensional Stability (%)
	Warp <b>0</b>
	Weft <b>0</b>
	Breaking Elongation
	Warp <b>17</b>
	Weft <b>27</b>
	Breaking load (daN)
	Warp <b>87</b>
	Weft <b>110</b>



# Print pattern MUNA



MUNA Cactus 36



MUNA soleil 90



MUNA gris 97



MUNA lin 11



MUNA Melon 22



MUNA souris 31



MUNA lagon 110



MUNA jade 116



MUNA terre 107



MUNA céladon 135



MUNA Coco 142



MUNA Sable 67



MUNA Saumon 143



MUNA Sisal 140



MUNA Tourterelle 138



MUNA Ardoise 87



MUNA Tilleul 103



MUNA Chanvre 72



MUNA Olive 61



MUNA Lierre 124

**drapilux**  
By Sotexpro

DRAPILUX GmbH - Hofenstraße 3, 77694 Kehl - Deutschland

Non-contractual photos and colors - Indicative fitting - Fitting may vary depending on support selected



# Print pattern MUNA



MUNA Indigo 144



MUNA Sienne 29



MUNA Rouge 21



MUNA Saphir 106



MUNA Violine 105



MUNA Titanium 98



MUNA Acier 18