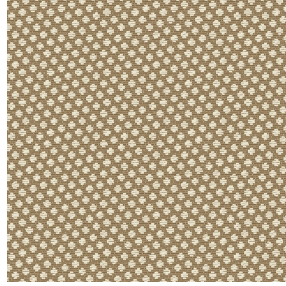




**BIOTAM BPI 00**  
Printing support



**GONIDIE Beige 63**  
Print pattern



## Printing support **BIOTAM BPI 00** Print pattern **GONIDIE Beige 63**

Combine aesthetics and well-being with high-tech fibres for antibacterial action. This fabric is proposed as a print medium.

### Technical properties



Flame retardant



Thermal



Antibacterial

**Applications** Roman blinds - Panel curtains - Curtains - Partition curtain


**Composition** polyester/polyester FR bioactive

**Weight** 170 g/m<sup>2</sup>

**Width** 280 cm

**Fabric direction** Room High Direction

**Fitting** ↔ 0.0 cm ↓ 0.0 cm

**Maintenance advice**     

**Label** France Terre Textile / OEKO-TEX STANDARD 100

**Minimum order** 25 linear(s) meter(s)



Visual not taking into account the printing medium, the final rendering may vary according to the chosen medium.

## Technical characteristics

Flame retardant

M1 / B1

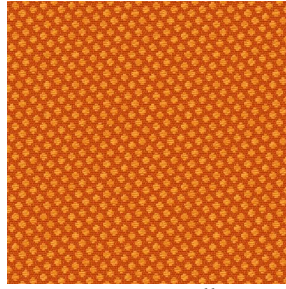
Antibacterial

Yes

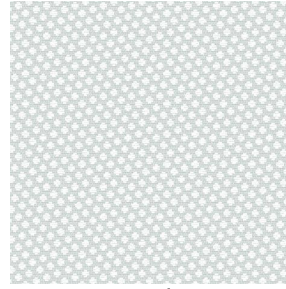
# Print pattern GONIDIE



GONIDIE Souris 31



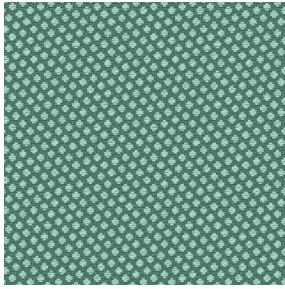
GONIDIE Citrouille 136



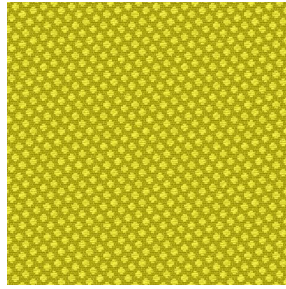
GONIDIE Glacier 43



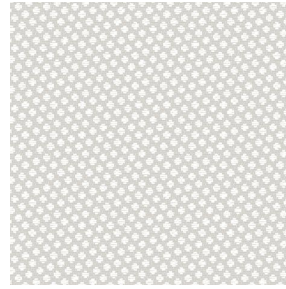
GONIDIE Noir 10



GONIDIE Céladon 135



GONIDIE Anis 62



GONIDIE Perle 96



GONIDIE Mousse 92



GONIDIE Tourterelle  
138



GONIDIE Brique 42



GONIDIE Opéra 104



GONIDIE Pacifique 54



GONIDIE Brun 23



GONIDIE Crème 32



GONIDIE Taupe 95



GONIDIE Lin 11



GONIDIE Lierre 124



GONIDIE Bergamote  
121



GONIDIE Hortensia 134



GONIDIE Vieux rose 64

**drapilux**  
By Sotexpro

DRAPILUX GmbH - Hofenstraße 3, 77694 Kehl - Deutschland

Non-contractual photos and colors - Indicative fitting - Fitting may vary depending on support selected

## Print pattern GONIDIE



GONIDIE Emeraude 88



GONIDIE Fuchsia 33



GONIDIE Ebene 113



GONIDIE Ficelle 09