



**BIOTAM BPI 00**  
Printing support



**ELAINA Turquoise 53**  
Print pattern



## Printing support **BIOTAM BPI 00** Print pattern **ELAINA Turquoise 53**

Combine aesthetics and well-being with high-tech fibres for antibacterial action. This fabric is proposed as a print medium.

### Technical properties



Flame retardant



Thermal



Antibacterial

**Applications** Roman blinds - Panel curtains - Curtains - Partition curtain

**Composition** polyester/polyester FR bioactive

**Weight** 170 g/m<sup>2</sup>

**Width** 280 cm

**Fabric direction** Room High Direction

**Fitting** ↔ 0.0 cm ↓ 0.0 cm

**Maintenance advice**     

**Label** France Terre Textile / OEKO-TEX STANDARD 100

**Minimum order** 25 linear(s) meter(s)



Visual not taking into account the printing medium, the final rendering may vary according to the chosen medium.

## Technical characteristics

Flame retardant

M1 / B1

Antibacterial

Yes

# Print pattern ELAINA



ELAINA Gris 91



ELAINA Violine 105



ELAINA Ocre 03



ELAINA Lin 11



ELAINA Bergamote 121



ELAINA Rose 129



ELAINA Pacifique 54



ELAINA Beige 63



ELAINA Céladon 135



ELAINA Saphir 106



ELAINA Anis 62



ELAINA Rouge 21



ELAINA Hortensia 134



ELAINA Prairie 125



ELAINA Graphite 77



ELAINA Lierre 124



ELAINA Naturel 26



ELAINA Genêt 06



ELAINA Ivoire 115



ELAINA Gentiane 16

**drapilux**  
By Sotexpro

DRAPILUX GmbH - Hofenstraße 3, 77694 Kehl - Deutschland

Non-contractual photos and colors - Indicative fitting - Fitting may vary depending on support selected



## Print pattern ELAINA



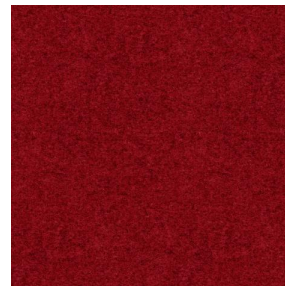
ELAINA Navy 120



ELAINA Chamois 111



ELAINA Anthracite 38



ELAINA Fiesta 131

**drapilux**  
By Sotexpro

DRAPILUX GmbH - Hafenstraße 3, 77694 Kehl - Deutschland

Non-contractual photos and colors - Indicative fitting - Fitting may vary depending on support selected