



**BIOTAM BPI 00**  
Printing support



**CHARLOTTE Pacifique 54**  
Print pattern



Visual not taking into account the printing medium, the final rendering may vary according to the chosen medium.

## Printing support **BIOTAM BPI 00** Print pattern **CHARLOTTE Pacifique** **54**

Combine aesthetics and well-being with high-tech fibres for antibacterial action. This fabric is proposed as a print medium.

### Technical properties



Flame retardant



Thermal



Antibacterial

**Applications** Roman blinds - Panel curtains - Curtains - Partition curtain


**Composition** polyester/polyester FR bioactive

**Weight** 170 g/m<sup>2</sup>

**Width** 280 cm

**Fabric direction** Room High Direction

**Fitting** ↔ 0.0 cm ↓ 0.0 cm

**Maintenance advice**     

**Label** France Terre Textile / OEKO-TEX STANDARD 100

**Minimum order** 25 linear(s) meter(s)

## Technical characteristics

Flame retardant

M1 / B1

Antibacterial

Yes

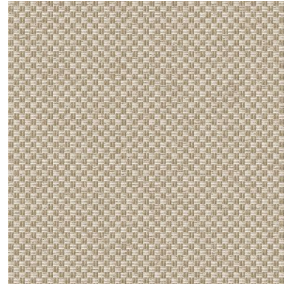
# Print pattern CHARLOTTE



CHARLOTTE Absinthe  
132



CHARLOTTE Anis 62



CHARLOTTE Beige 63



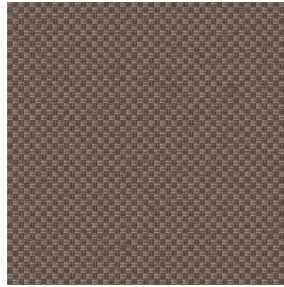
CHARLOTTE Bouteille  
101



CHARLOTTE Brume 47



CHARLOTTE Cerise 66



CHARLOTTE Chamois  
111



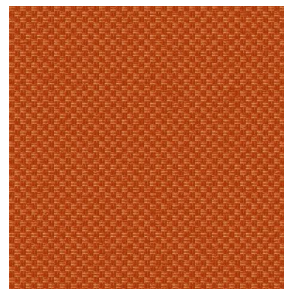
CHARLOTTE Chataigne  
55



CHARLOTTE Chaudron  
118



CHARLOTTE Chocolat  
70



CHARLOTTE Citrouille  
136



CHARLOTTE Cobalt 114



CHARLOTTE Crepuscule  
45



CHARLOTTE Cuivre 50



CHARLOTTE Ebene 124



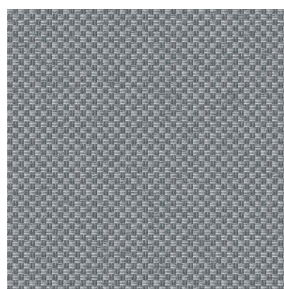
CHARLOTTE Ficelle 09



CHARLOTTE Fiesta 131



CHARLOTTE Grenat 56



CHARLOTTE Gris 97



CHARLOTTE Hortensia  
134

**drapilux**  
By Sotexpro

DRAPILUX GmbH - Hofenstraße 3, 77694 Kehl - Deutschland

Non-contractual photos and colors - Indicative fitting - Fitting may vary depending on support selected



# Print pattern CHARLOTTE



CHARLOTTE Lagon 110



CHARLOTTE Lilas 19



CHARLOTTE Lin 11



CHARLOTTE Maïs 37



CHARLOTTE Melon 22



CHARLOTTE Menthe  
122



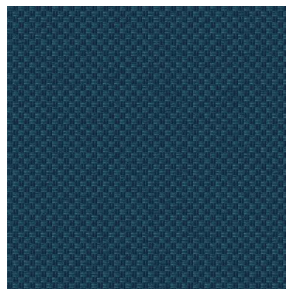
CHARLOTTE Mordore  
133



CHARLOTTE Mousse 92



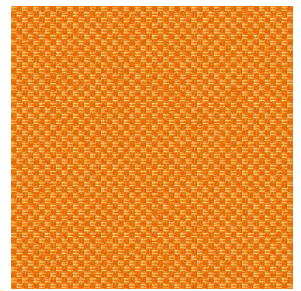
CHARLOTTE Noir 10



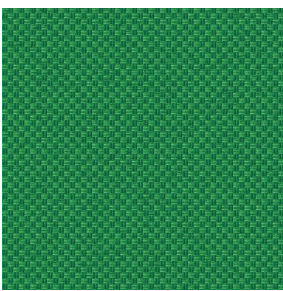
CHARLOTTE Océan 91



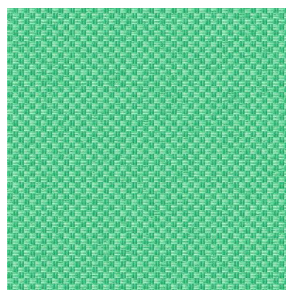
CHARLOTTE Opéra 104



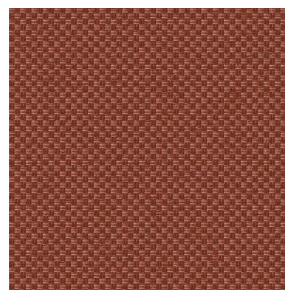
CHARLOTTE Orange 15



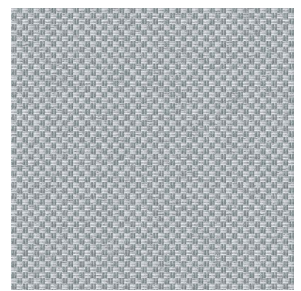
CHARLOTTE Prairie 125



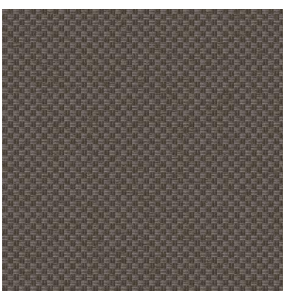
CHARLOTTE Printemps  
130



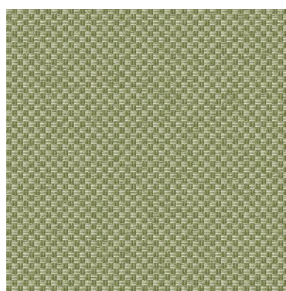
CHARLOTTE Sienne 29



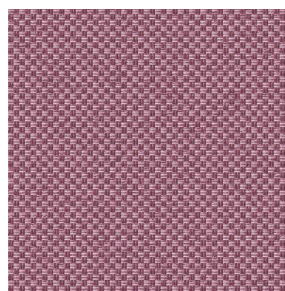
CHARLOTTE Souris 31



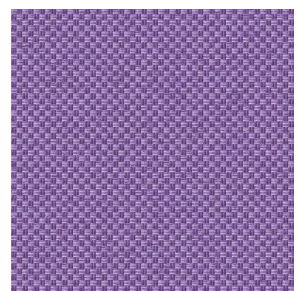
CHARLOTTE Terre 107



CHARLOTTE Tilleul 103



CHARLOTTE Vieux rose  
64



CHARLOTTE Violine 105

**drapilux**  
By Sotexpro

DRAPILUX GmbH - Hafenstraße 3, 77694 Kehl - Deutschland

Non-contractual photos and colors - Indicative fitting - Fitting may vary depending on support selected