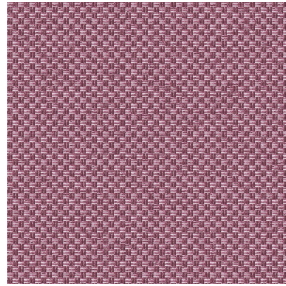




BIOSAT BPI 00  
Printing support



CHARLOTTE Vieux rose 64  
Print pattern



Visual not taking into account the printing medium, the final rendering may vary according to the chosen medium.

## Printing support BIOSAT BPI 00 Print pattern CHARLOTTE Vieux rose 64

Combine aesthetics and well-being with high-tech fibres for antibacterial and antiviral action : kills 99% of bacteria (tested on staphylococcus aureus et klebsiella pneumoniae). BIOSAT was tested on 2 virus strains: the enveloped human coronavirus HCoV-229 (similar to Covid-19) and the non-enveloped Murine Norovirus (similar to the gastroenteritis virus). For the former, BIOSAT kills nearly 98% of the virus in less than 2 hours and for the latter, 73% in less than 2 hours. This fabric is proposed as a print medium.

### Technical properties



Flame  
retardant



Thermal



Antibacterial



Antiviral



Acoustic

**Applications** Roman blinds - Panel curtains - Curtains - Partition curtain

**Composition** polyester/polyester FR bioactive

**Weight** 135 g/m<sup>2</sup>

**Width** 280 cm

**Fabric direction** Room High Direction

**Fitting** ↔ 0.0 cm ↓ 0.0 cm

**Maintenance advice**     

**Label** France Terre Textile / OEKO-TEX STANDARD 100

**Minimum order** 25 linear(s) meter(s)

## Technical characteristics

Flame retardant

M1 / EN13773 : 2003 Class 1 / B1 / IMO PASS / UNI 8456 / 9174  
Classe Uno

Acoustic

Noise reduction coefficient (NRC) : **0.72**

Antibacterial

Yes

Resilience

Pilling **5**

Dimensional Stability (%)

Warp **-0.5**

Weft **-0.5**

Martindale (Cycles) **14000**

Breaking Elongation

Warp **43**

Weft **37**

Breaking load (daN)

Warp **42**

Weft **129**

# Print pattern CHARLOTTE



CHARLOTTE Absinthe  
132



CHARLOTTE Anis 62



CHARLOTTE Beige 63



CHARLOTTE Bouteille  
101



CHARLOTTE Brume 47



CHARLOTTE Cerise 66



CHARLOTTE Chamois  
111



CHARLOTTE Chataigne  
55



CHARLOTTE Chaudron  
118



CHARLOTTE Chocolat  
70



CHARLOTTE Citrouille  
136



CHARLOTTE Cobalt 114



CHARLOTTE Crepuscule  
45



CHARLOTTE Cuivre 50



CHARLOTTE Ebene 124



CHARLOTTE Ficelle 09



CHARLOTTE Fiesta 131



CHARLOTTE Grenat 56



CHARLOTTE Gris 97



CHARLOTTE Hortensia  
134

**drapilux**  
By Sotexpro

DRAPILUX GmbH - Hofenstraße 3, 77694 Kehl - Deutschland

Non-contractual photos and colors - Indicative fitting - Fitting may vary depending on support selected

# Print pattern CHARLOTTE



CHARLOTTE Lagon 110



CHARLOTTE Lilas 19



CHARLOTTE Lin 11



CHARLOTTE Maïs 37



CHARLOTTE Melon 22



CHARLOTTE Menthe  
122



CHARLOTTE Mordore  
133



CHARLOTTE Mousse 92



CHARLOTTE Noir 10



CHARLOTTE Océan 91



CHARLOTTE Opéra 104



CHARLOTTE Orange 15



CHARLOTTE Pacifique  
54



CHARLOTTE Prairie 125



CHARLOTTE Printemps  
130



CHARLOTTE Sienne 29



CHARLOTTE Souris 31



CHARLOTTE Terre 107



CHARLOTTE Tilleul 103



CHARLOTTE Viole 105

**drapilux**  
By Sotexpro

DRAPILUX GmbH - Hofenstraße 3, 77694 Kehl - Deutschland

Non-contractual photos and colors - Indicative fitting - Fitting may vary depending on support selected