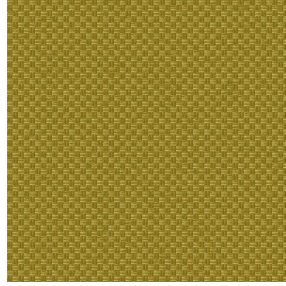




BIOSAT BPI 00
Printing support



CHARLOTTE Mousse 92
Print pattern



Printing support BIOSAT BPI 00 Print pattern CHARLOTTE Mousse 92

Combine aesthetics and well-being with high-tech fibres for antibacterial and antiviral action : kills 99% of bacteria (tested on staphylococcus aureus et klebsiella pneumoniae). BIOSAT was tested on 2 virus strains: the enveloped human coronavirus HCoV-229 (similar to Covid-19) and the non-enveloped Murine Norovirus (similar to the gastroenteritis virus). For the former, BIOSAT kills nearly 98% of the virus in less than 2 hours and for the latter, 73% in less than 2 hours. This fabric is proposed as a print medium.

Technical properties



Flame retardant



Thermal



Antibacterial



Antiviral



Acoustic

Applications Roman blinds - Panel curtains - Curtains - Partition curtain

Composition polyester/polyester FR bioactive

Weight 135 g/m²

Width 280 cm

Fabric direction Room High Direction

Fitting ↔ 0.0 cm ↓ 0.0 cm

Maintenance advice     

Label France Terre Textile / OEKO-TEX STANDARD 100

Minimum order 25 linear(s) metter(s)



Visual not taking into account the printing medium, the final rendering may vary according to the chosen medium.

Technical characteristics

Flame retardant	M1 / EN13773 : 2003 Class 1 / B1 / IMO PASS / UNI 8456 / 9174 Classe Uno	
Acoustic	Noise reduction coefficient (NRC) : 0.72	
Antibacterial	Yes	
Resilience	Pilling	5
	Dimensional Stability (%)	
	Warp	-0.5
	Weft	-0.5
	Martindale (Cycles)	14000
	Breaking Elongation	
	Warp	43
	Weft	37
	Breaking load (daN)	
Warp	42	
Weft	129	

Print pattern CHARLOTTE



CHARLOTTE Absinthe
132



CHARLOTTE Anis 62



CHARLOTTE Beige 63



CHARLOTTE Bouteille
101



CHARLOTTE Brume 47



CHARLOTTE Cerise 66



CHARLOTTE Chamois
111



CHARLOTTE Chataigne
55



CHARLOTTE Chaudron
118



CHARLOTTE Chocolat
70



CHARLOTTE Citrouille
136



CHARLOTTE Cobalt 114



CHARLOTTE Crepuscule
45



CHARLOTTE Cuivre 50



CHARLOTTE Ebene 124



CHARLOTTE Ficelle 09



CHARLOTTE Fiesta 131



CHARLOTTE Grenat 56



CHARLOTTE Gris 97



CHARLOTTE Hortensia
134

drapilux
By Sotexpro

DRAPILUX GmbH - Hofenstraße 3, 77694 Kehl - Deutschland

Non-contractual photos and colors - Indicative fitting - Fitting may vary depending on support selected

Print pattern CHARLOTTE



CHARLOTTE Lagon 110



CHARLOTTE Lilas 19



CHARLOTTE Lin 11



CHARLOTTE Maïs 37



CHARLOTTE Melon 22



CHARLOTTE Menthe
122



CHARLOTTE Mordore
133



CHARLOTTE Noir 10



CHARLOTTE Océan 91



CHARLOTTE Opéra 104



CHARLOTTE Orange 15



CHARLOTTE Pacifique
54



CHARLOTTE Prairie 125



CHARLOTTE Printemps
130



CHARLOTTE Sienne 29



CHARLOTTE Souris 31



CHARLOTTE Terre 107



CHARLOTTE Tilleul 103



CHARLOTTE Vieux rose
64



CHARLOTTE Violine 105

drapilux
By Sotexpro

DRAPILUX GmbH - Hafenstraße 3, 77694 Kehl - Deutschland

Non-contractual photos and colors - Indicative fitting - Fitting may vary depending on support selected