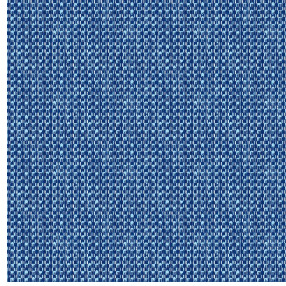




**BIOSAT BPI 00**  
Printing support



**RIVE Bleu 41**  
Print pattern



Visual not taking into account the printing medium, the final rendering may vary according to the chosen medium.

## Printing support **BIOSAT BPI 00** Print pattern **RIVE Bleu 41**

Combine aesthetics and well-being with high-tech fibres for antibacterial and antiviral action : kills 99% of bacteria (tested on staphylococcus aureus et klebsiella pneumoniae). BIOSAT was tested on 2 virus strains: the enveloped human coronavirus HCoV-229 (similar to Covid-19) and the non-enveloped Murine Norovirus (similar to the gastroenteritis virus). For the former, BIOSAT kills nearly 98% of the virus in less than 2 hours and for the latter, 73% in less than 2 hours. This fabric is proposed as a print medium.

### Technical properties



Flame retardant



Thermal



Antibacterial



Antiviral



Acoustic

**Applications** Roman blinds - Panel curtains - Curtains - Partition curtain

**Composition** polyester/polyester FR bioactive

**Weight** 135 g/m<sup>2</sup>

**Width** 280 cm

**Fabric direction** Room High Direction

**Fitting** ↔ 0.0 cm ↓ 0.0 cm

**Maintenance advice**

**Label** France Terre Textile / OEKO-TEX STANDARD 100

**Minimum order** 25 linear(s) metter(s)

## Technical characteristics

|                 |  |              |
|-----------------|--|--------------|
| Flame retardant | M1 / EN13773 : 2003 Class 1 / B1 / IMO PASS / UNI 8456 / 9174 Classe Uno |              |
| Acoustic        | Noise reduction coefficient (NRC) : <b>0.72</b>                          |              |
| Antibacterial   | Yes  |              |
| Resilience      | Pilling  | <b>5</b>     |
|                 | Dimensional Stability (%)  |              |
|                 | Warp   | <b>-0.5</b>  |
|                 | Weft   | <b>-0.5</b>  |
|                 | Martindale (Cycles)  | <b>14000</b> |
|                 | Breaking Elongation  |              |
|                 | Warp   | <b>43</b>    |
|                 | Weft   | <b>37</b>    |
|                 | Breaking load (daN)  |              |
| Warp            | <b>42</b>  |              |
| Weft            | <b>129</b>   |              |

## Print pattern RIVE



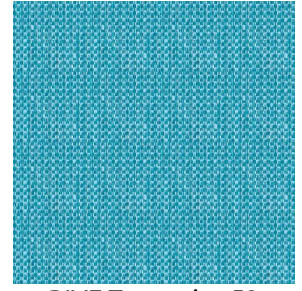
RIVE Fuchsia 33



RIVE Jaune 46



RIVE Océan 91



RIVE Turquoise 53



RIVE Sable 67



RIVE Taupe 95



RIVE Gris 97

**drapilux**  
By Sotexpro

DRAPILUX GmbH - Hafenstraße 3, 77694 Kehl - Deutschland

Non-contractual photos and colors - Indicative fitting - Fitting may vary depending on support selected