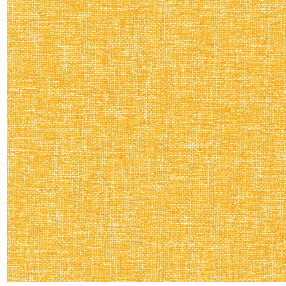




**BELORA BPI 00**  
Printing support



**MUNA soleil 90**  
Print pattern

## Printing support **BELORA BPI 00** Print pattern **MUNA soleil 90**

Dimout support for digital printing. It does not have an M1 fire rating.

### Technical properties



Flame retardant



Thermal



Acoustic

**Applications** Roman blinds - Panel curtains - Lining - Curtains

**Composition** 100% polyester

**Weight** 260 g/m<sup>2</sup>

**Width** 140 cm

**Fabric direction** Standard Direction

**Fitting** ↔ cm ↓ cm

**Maintenance advice**

**Label** OEKO-TEX STANDARD 100

**Minimum order** 25 linear(s) meter(s)



Visual not taking into account the printing medium, the final rendering may vary according to the chosen medium.

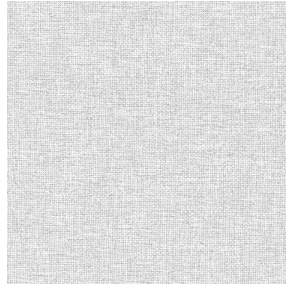
## Technical characteristics

Flame retardant	NF 12952	
Acoustic	Noise reduction coefficient (NRC) :	<b>0.88</b>
Resilience	Dimensional Stability (%)	
	Warp	<b>0</b>
	Weft	<b>0</b>
	Breaking Elongation	
	Warp	<b>17</b>
	Weft	<b>27</b>
	Breaking load (daN)	
	Warp	<b>87</b>
	Weft	<b>110</b>

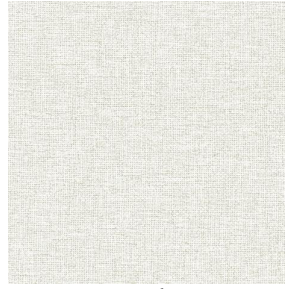
# Print pattern MUNA



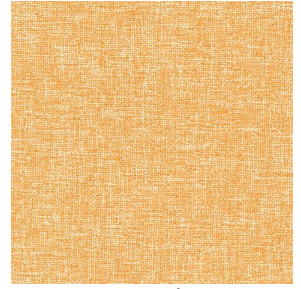
MUNA Cactus 36



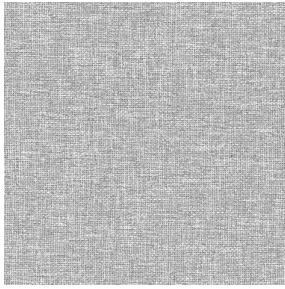
MUNA gris 97



MUNA lin 11



MUNA Melon 22



MUNA souris 31



MUNA lagon 110



MUNA jade 116



MUNA terre 107



MUNA céladon 135



MUNA Coco 142



MUNA Sable 67



MUNA Saumon 143



MUNA Sisal 140



MUNA Tourterelle 138



MUNA Ardoise 87



MUNA Tilleul 103



MUNA Chanvre 72



MUNA Graphite 77



MUNA Olive 61



MUNA Lierre 124

**drapilux**  
By Sotexpro

DRAPILUX GmbH - Hofenstraße 3, 77694 Kehl - Deutschland

Non-contractual photos and colors - Indicative fitting - Fitting may vary depending on support selected

# Print pattern MUNA



MUNA Indigo 144



MUNA Sienne 29



MUNA Rouge 21



MUNA Saphir 106



MUNA Violine 105



MUNA Titanium 98



MUNA Acier 18