



**ASTRAL BPI 00**  
Printing support



**ZELIE Taupe 95**  
Print pattern



Visual not taking into account the printing medium, the final rendering may vary according to the chosen medium.

# Printing support **ASTRAL BPI 00** Print pattern **ZELIE Taupe 95**

Blackout Print Support

## Technical properties



Flame retardant



Thermal

**Applications** Roman blinds - Panel curtains - Curtains

**Composition** 100% polyester with white flocked acrylic backing

**Weight** 280 g/m<sup>2</sup>

**Width** 280 cm

**Fabric direction** Room high or standard direction

**Fitting** ↔ 130.0 cm ↓ 46.0 cm

**Maintenance advice**     

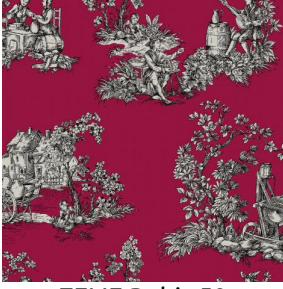
**Label**

**Minimum order** 25 linear(s) meter(s)

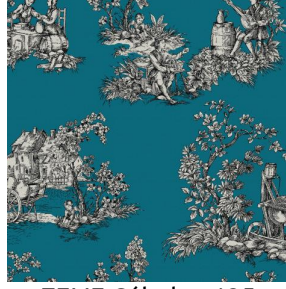
## Technical characteristics

Flame retardant	EN13773 : 2003 Class 1 / BS 5867 TYPE C / B1 / IMO PASS / UNI 8456 / 9174 Classe Uno	
Optical index	Light reflexion :	82 %
	Light absorption :	18 %
	Light transmission :	0 %
Thermal index	Solar reflexion :	74 %
	Solar absorption :	26 %
	Solar transmission :	0 %
	UV transmission :	0 %
	Gtot :	Gt 33 % Fc 55 %
Resilience	Lightfastness (units Class/8)	5
	Dimentional Stability (%)	
	Warp	-0,5
	Weft	0
	Breaking Elongation	
	Warp	26
	Weft	15
	Breaking load (daN)	
Warp	62	
Weft	31	

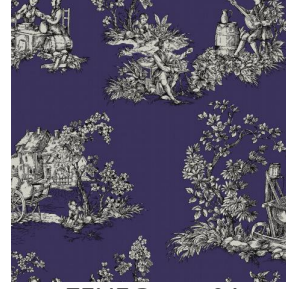
# Print pattern ZELIE



ZELIE Rubis 59



ZELIE Céladon 135



ZELIE Prune 84