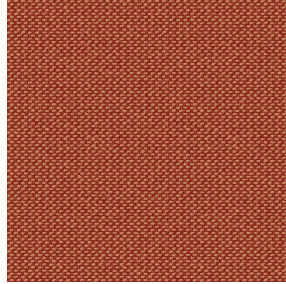




**ASTRAL BPI 00**  
Printing support



**METIS Sienne 29**  
Print pattern



# Printing support **ASTRAL BPI 00** Print pattern **METIS Sienne 29**

Blackout Print Support

## Technical properties



Flame retardant



Thermal

**Applications** Roman blinds - Panel curtains - Curtains

**Composition** 100% polyester with white flocked acrylic backing

**Weight** 280 g/m<sup>2</sup>

**Width** 280 cm

**Fabric direction** Room high or standard direction

**Fitting** ↔ 0.0 cm ↓ 0.0 cm

**Maintenance advice**

**Label**

**Minimum order** 25 linear(s) meter(s)



Visual not taking into account the printing medium, the final rendering may vary according to the chosen medium.

## Technical characteristics

|                 |  |                        |
|-----------------|--|------------------------|
| Flame retardant | EN13773 : 2003 Class 1 / BS 5867 TYPE C / B1 / IMO PASS / UNI 8456 / 9174 Classe Uno |                        |
| Optical index   | Light reflexion :  | <b>82 %</b>            |
|                 | Light absorption :   | <b>18 %</b>            |
|                 | Light transmission :   | <b>0 %</b>             |
| Thermal index   | Solar reflexion :  | <b>74 %</b>            |
|                 | Solar absorption :   | <b>26 %</b>            |
|                 | Solar transmission :   | <b>0 %</b>             |
|                 | UV transmission :  | <b>0 %</b>             |
|                 | Gtot :   | <b>Gt 33 % Fc 55 %</b> |
| Resilience      | Lightfastness (units Class/8)  | <b>5</b>               |
|                 | Dimensional Stability (%)  |                        |
|                 | Warp   | <b>-0,5</b>            |
|                 | Weft   | <b>0</b>               |
|                 | Breaking Elongation  |                        |
|                 | Warp   | <b>26</b>              |
|                 | Weft   | <b>15</b>              |
|                 | Breaking load (daN)  |                        |
| Warp            | <b>62</b>  |                        |
| Weft            | <b>31</b>  |                        |

# Print pattern METIS



METIS Gentiane 16



METIS Absinthe 132



METIS Noir 10



METIS Citrouille 136



METIS Chanvre 72



METIS Gris 97



METIS Bergamote 121



METIS Violine 105



METIS Perle 96



METIS Céladon 135



METIS Lin 11



METIS Lagon 110



METIS Cobalt 114



METIS Framboise 81



METIS Abricot 08



METIS Chamois 111



METIS Ivoire 115



METIS Ficelle 09



METIS Rose 129



METIS Parme 79

**drapilux**  
By Sotexpro

DRAPILUX GmbH - Hofenstraße 3, 77694 Kehl - Deutschland

Non-contractual photos and colors - Indicative fitting - Fitting may vary depending on support selected

## Print pattern METIS



METIS Cactus 36



METIS Hortensia 134



METIS Naturel 26



METIS Chaudron 118