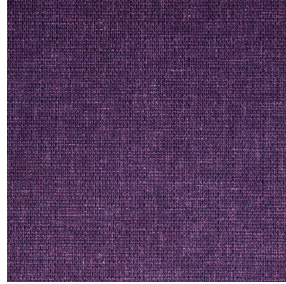




ASTRAL BPI 00
Printing support



MUNA Saphir 106
Print pattern



Printing support **ASTRAL BPI 00** Print pattern **MUNA Saphir 106**

Blackout Print Support

Technical properties



Flame retardant



Thermal

Applications Roman blinds - Panel curtains - Curtains

Composition 100% polyester with white flocked acrylic backing

Weight 280 g/m²

Width 280 cm

Fabric direction Room high or standard direction

Fitting ↔ cm ↓ cm

Maintenance advice     

Label

Minimum order 25 linear(s) meter(s)



Visual not taking into account the printing medium, the final rendering may vary according to the chosen medium.

Technical characteristics

| | | |
|-----------------|--|-----------------|
| Flame retardant | EN13773 : 2003 Class 1 / BS 5867 TYPE C / B1 / IMO PASS / UNI 8456 / 9174 Classe Uno | |
| Optical index | Light reflexion : | 82 % |
| | Light absorption : | 18 % |
| | Light transmission : | 0 % |
| Thermal index | Solar reflexion : | 74 % |
| | Solar absorption : | 26 % |
| | Solar transmission : | 0 % |
| | UV transmission : | 0 % |
| | Gtot : | Gt 33 % Fc 55 % |
| Resilience | Lightfastness (units Class/8) | 5 |
| | Dimensional Stability (%) | |
| | Warp | -0,5 |
| | Weft | 0 |
| | Breaking Elongation | |
| | Warp | 26 |
| | Weft | 15 |
| | Breaking load (daN) | |
| Warp | 62 | |
| Weft | 31 | |

Print pattern MUNA



MUNA Cactus 36



MUNA soleil 90



MUNA gris 97



MUNA lin 11



MUNA Melon 22



MUNA souris 31



MUNA lagon 110



MUNA jade 116



MUNA terre 107



MUNA céladon 135



MUNA Coco 142



MUNA Sable 67



MUNA Saumon 143



MUNA Sisal 140



MUNA Tourterelle 138



MUNA Ardoise 87



MUNA Tilleul 103



MUNA Chanvre 72



MUNA Graphite 77



MUNA Olive 61

drapilux
By Sotexpro

DRAPILUX GmbH - Hafenstraße 3, 77694 Kehl - Deutschland

Non-contractual photos and colors - Indicative fitting - Fitting may vary depending on support selected

Print pattern MUNA



MUNA Lierre 124



MUNA Indigo 144



MUNA Sienne 29



MUNA Rouge 21



MUNA Violine 105



MUNA Titanium 98



MUNA Acier 18