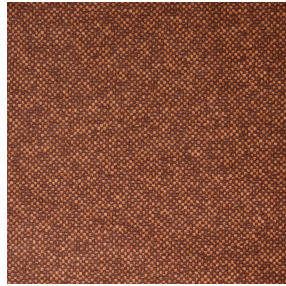




ASTRAL BPI 00
Printing support



ANATOLE Chaudron 118
Print pattern



Visual not taking into account the printing medium, the final rendering may vary according to the chosen medium.

Printing support **ASTRAL BPI 00** Print pattern **ANATOLE Chaudron 118**

Blackout Print Support

Technical properties



Flame retardant



Thermal

Applications Roman blinds - Panel curtains - Curtains

Composition 100% polyester with white flocked acrylic backing

Weight 280 g/m²

Width 280 cm

Fabric direction Room high or standard direction

Fitting ↔ cm ↓ cm

Maintenance advice     

Label

Minimum order 25 linear(s) meter(s)

Technical characteristics

| | | |
|---------------------|--|-----------------|
| Flame retardant | EN13773 : 2003 Class 1 / BS 5867 TYPE C / B1 / IMO PASS / UNI 8456 / 9174 Classe Uno | |
| Optical index | Light reflexion : | 82 % |
| | Light absorption : | 18 % |
| | Light transmission : | 0 % |
| Thermal index | Solar reflexion : | 74 % |
| | Solar absorption : | 26 % |
| | Solar transmission : | 0 % |
| | UV transmission : | 0 % |
| | Gtot : | Gt 33 % Fc 55 % |
| Resilience | Lightfastness (units Class/8) | 5 |
| | Dimentional Stability (%) | |
| | Warp | -0,5 |
| | Weft | 0 |
| | Breaking Elongation | |
| | Warp | 26 |
| | Weft | 15 |
| Breaking load (daN) | | |
| Warp | 62 | |
| Weft | 31 | |

Print pattern ANATOLE



ANATOLE Naturel 26



ANATOLE lin 11



ANATOLE Ficelle 09



ANATOLE Celadon 135



ANATOLE Océan 91



ANATOLE Titanium 98



ANATOLE Cactus 36



ANATOLE mousse 92



ANATOLE Or 94



ANATOLE Amarante
108



ANATOLE Taupe 95