



ASTRAL BPI 00
Printing support



RUSTIC Taupe 95
Print pattern



Printing support **ASTRAL BPI 00** Print pattern **RUSTIC Taupe 95**

Blackout Print Support

Technical properties



Flame retardant



Thermal

Applications Roman blinds - Panel curtains - Curtains

Composition 100% polyester with white flocked acrylic backing

Weight 280 g/m²

Width 280 cm

Fabric direction Room high or standard direction

Fitting ↔ cm ↓ cm

Maintenance advice     

Label

Minimum order 25 linear(s) meter(s)



Visual not taking into account the printing medium, the final rendering may vary according to the chosen medium.

Technical characteristics

Flame retardant	EN13773 : 2003 Class 1 / BS 5867 TYPE C / B1 / IMO PASS / UNI 8456 / 9174 Classe Uno	
Optical index	Light reflexion :	82 %
	Light absorption :	18 %
	Light transmission :	0 %
Thermal index	Solar reflexion :	74 %
	Solar absorption :	26 %
	Solar transmission :	0 %
	UV transmission :	0 %
	Gtot :	Gt 33 % Fc 55 %
Resilience	Lightfastness (units Class/8)	5
	Dimentional Stability (%)	
	Warp	-0,5
	Weft	0
	Breaking Elongation	
	Warp	26
	Weft	15
	Breaking load (daN)	
Warp	62	
Weft	31	

Print pattern RUSTIC



RUSTIC Lin 11



RUSTIC Naturel 26



RUSTIC Sienne 29



RUSTIC Terre 107



RUSTIC Titanium 98



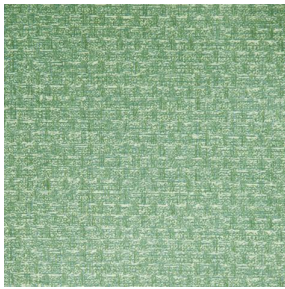
RUSTIC Hortensia 134



RUSTIC Bergamote 121



RUSTIC Mousse 92



RUSTIC Prairie 125



RUSTIC Glacier 43



RUSTIC Bleu 41

drapilux
By Sotexpro

DRAPILUX GmbH - Hafenstraße 3, 77694 Kehl - Deutschland

Non-contractual photos and colors - Indicative fitting - Fitting may vary depending on support selected