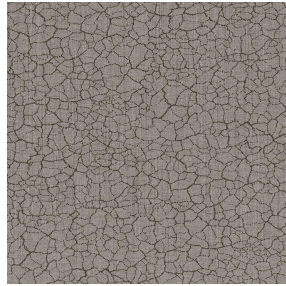




ASTRAL BPI 00
Printing support



TERRA Chamois 111
Print pattern



Printing support **ASTRAL BPI 00** Print pattern **TERRA Chamois 111**

Blackout Print Support

Technical properties



Flame retardant



Thermal

Applications Roman blinds - Panel curtains - Curtains

Composition 100% polyester with white flocked acrylic backing

Weight 280 g/m²

Width 280 cm

Fabric direction Room high or standard direction

Fitting ↔ 0.0 cm ↓ 0.0 cm

Maintenance advice     

Label

Minimum order 25 linear(s) meter(s)



Visual not taking into account the printing medium, the final rendering may vary according to the chosen medium.

Technical characteristics

Flame retardant	EN13773 : 2003 Class 1 / BS 5867 TYPE C / B1 / IMO PASS / UNI 8456 / 9174 Classe Uno	
Optical index	Light reflexion :	82 %
	Light absorption :	18 %
	Light transmission :	0 %
Thermal index	Solar reflexion :	74 %
	Solar absorption :	26 %
	Solar transmission :	0 %
	UV transmission :	0 %
	Gtot :	Gt 33 % Fc 55 %
Resilience	Lightfastness (units Class/8)	5
	Dimentional Stability (%)	
	Warp	-0,5
	Weft	0
	Breaking Elongation	
	Warp	26
	Weft	15
	Breaking load (daN)	
Warp	62	
Weft	31	

Print pattern TERRA



TERRA Ficelle 09



TERRA Taupe 95



TERRA Ecume 82



TERRA Rose 129



TERRA Fusain 71



TERRA Brun 23



TERRA Hortensia 134



TERRA Naturel 26



TERRA Anis 62



TERRA Lagon 110



TERRA Citrouille 136



TERRA Pacifique 54



TERRA Titanium 98



TERRA Graphite 77



TERRA Gris 97



TERRA Ardoise 87



TERRA Violine 105



TERRA Chanvre 72



TERRA Argile 85



TERRA Lin 11

drapilux
By Sotexpro

DRAPILUX GmbH - Hofenstraße 3, 77694 Kehl - Deutschland

Non-contractual photos and colors - Indicative fitting - Fitting may vary depending on support selected

Print pattern TERRA



TERRA Genêt 06



TERRA Céladon 135



TERRA Ebene 113



TERRA Ocre 03