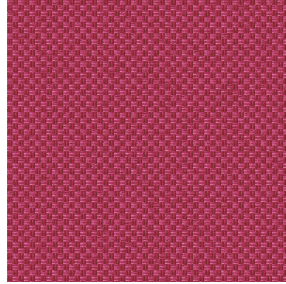




**ASTRAL BPI 00**  
Printing support



**CHARLOTTE Grenat 56**  
Print pattern



# Printing support **ASTRAL BPI 00** Print pattern **CHARLOTTE Grenat 56**

Blackout Print Support

## Technical properties



Flame retardant



Thermal

**Applications** Roman blinds - Panel curtains - Curtains

**Composition** 100% polyester with white flocked acrylic backing

**Weight** 280 g/m<sup>2</sup>

**Width** 280 cm

**Fabric direction** Room high or standard direction

**Fitting** ↔ 0.0 cm ↓ 0.0 cm

**Maintenance advice**

**Label**

**Minimum order** 25 linear(s) meter(s)



Visual not taking into account the printing medium, the final rendering may vary according to the chosen medium.

## Technical characteristics

Flame retardant

EN13773 : 2003 Class 1 / BS 5867 TYPE C / B1 / IMO PASS / UNI 8456 / 9174 Classe Uno

Optical index

|                      |             |
|----------------------|-------------|
| Light reflexion :    | <b>82 %</b> |
| Light absorption :   | <b>18 %</b> |
| Light transmission : | <b>0 %</b>  |

Thermal index

|                      |                        |
|----------------------|------------------------|
| Solar reflexion :    | <b>74 %</b>            |
| Solar absorption :   | <b>26 %</b>            |
| Solar transmission : | <b>0 %</b>             |
| UV transmission :    | <b>0 %</b>             |
| Gtot :               | <b>Gt 33 % Fc 55 %</b> |

Resilience

|                               |             |
|-------------------------------|-------------|
| Lightfastness (units Class/8) | <b>5</b>    |
| Dimentional Stability (%)     |             |
| Warp                          | <b>-0,5</b> |
| Weft                          | <b>0</b>    |
| Breaking Elongation           |             |
| Warp                          | <b>26</b>   |
| Weft                          | <b>15</b>   |
| Breaking load (daN)           |             |
| Warp                          | <b>62</b>   |
| Weft                          | <b>31</b>   |

# Print pattern CHARLOTTE



CHARLOTTE Absinthe  
132



CHARLOTTE Anis 62



CHARLOTTE Beige 63



CHARLOTTE Bouteille  
101



CHARLOTTE Brume 47



CHARLOTTE Cerise 66



CHARLOTTE Chamois  
111



CHARLOTTE Chataigne  
55



CHARLOTTE Chaudron  
118



CHARLOTTE Chocolat  
70



CHARLOTTE Citrouille  
136



CHARLOTTE Cobalt 114



CHARLOTTE Crepuscule  
45



CHARLOTTE Cuivre 50



CHARLOTTE Ebene 124



CHARLOTTE Ficelle 09



CHARLOTTE Fiesta 131



CHARLOTTE Gris 97



CHARLOTTE Hortensia  
134



CHARLOTTE Lagon 110

**drapilux**  
By Sotexpro

DRAPILUX GmbH - Hofenstraße 3, 77694 Kehl - Deutschland

Non-contractual photos and colors - Indicative fitting - Fitting may vary depending on support selected

# Print pattern CHARLOTTE



CHARLOTTE Lilas 19



CHARLOTTE Lin 11



CHARLOTTE Mais 37



CHARLOTTE Melon 22



CHARLOTTE Menthe  
122



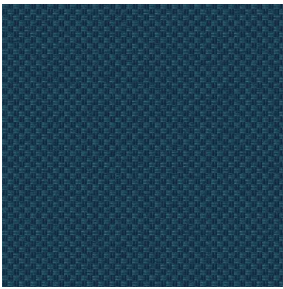
CHARLOTTE Mordore  
133



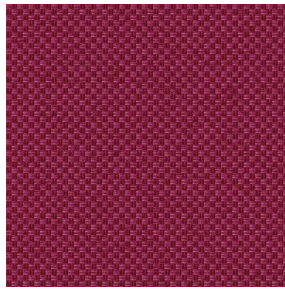
CHARLOTTE Mousse 92



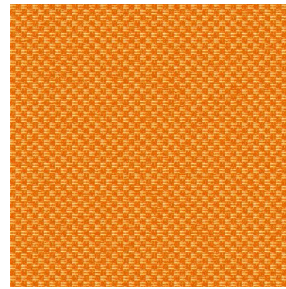
CHARLOTTE Noir 10



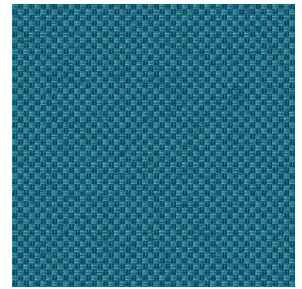
CHARLOTTE Océan 91



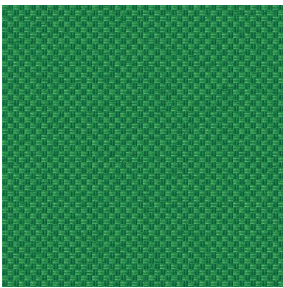
CHARLOTTE Opéra 104



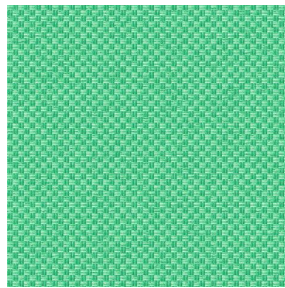
CHARLOTTE Orange 15



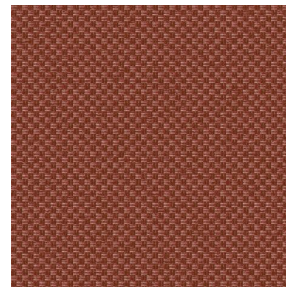
CHARLOTTE Pacifique  
54



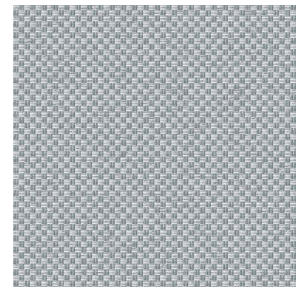
CHARLOTTE Prairie 125



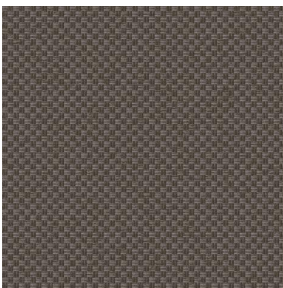
CHARLOTTE Printemps  
130



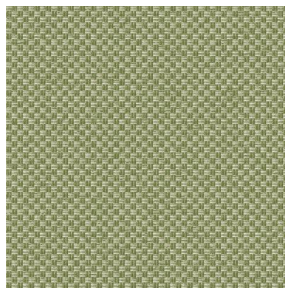
CHARLOTTE Sienne 29



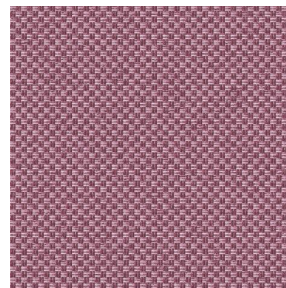
CHARLOTTE Souris 31



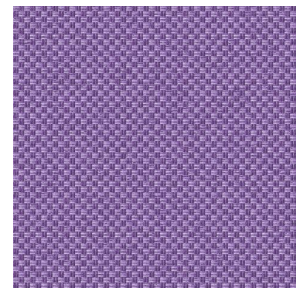
CHARLOTTE Terre 107



CHARLOTTE Tilleul 103



CHARLOTTE Vieux rose  
64



CHARLOTTE Violine 105

**drapilux**  
By Sotexpro

DRAPILUX GmbH - Hafenstraße 3, 77694 Kehl - Deutschland

Non-contractual photos and colors - Indicative fitting - Fitting may vary depending on support selected