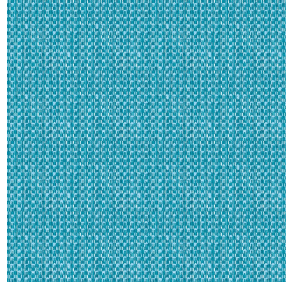




ASTRAL BPI 00
Printing support



RIVE Turquoise 53
Print pattern



Printing support **ASTRAL BPI 00** Print pattern **RIVE Turquoise 53**

Blackout Print Support

Technical properties



Flame retardant



Thermal

Applications Roman blinds - Panel curtains - Curtains

Composition 100% polyester with white flocked acrylic backing

Weight 280 g/m²

Width 280 cm

Fabric direction Room high or standard direction

Fitting ↔ 0.0 cm ↓ 0.0 cm

Maintenance advice

Label

Minimum order 25 linear(s) meter(s)



Visual not taking into account the printing medium, the final rendering may vary according to the chosen medium.

Technical characteristics

| | | |
|-----------------|--|-----------------|
| Flame retardant | EN13773 : 2003 Class 1 / BS 5867 TYPE C / B1 / IMO PASS / UNI 8456 / 9174 Classe Uno | |
| Optical index | Light reflexion : | 82 % |
| | Light absorption : | 18 % |
| | Light transmission : | 0 % |
| Thermal index | Solar reflexion : | 74 % |
| | Solar absorption : | 26 % |
| | Solar transmission : | 0 % |
| | UV transmission : | 0 % |
| | Gtot : | Gt 33 % Fc 55 % |
| Resilience | Lightfastness (units Class/8) | 5 |
| | Dimentional Stability (%) | |
| | Warp | -0,5 |
| | Weft | 0 |
| | Breaking Elongation | |
| | Warp | 26 |
| | Weft | 15 |
| | Breaking load (daN) | |
| Warp | 62 | |
| Weft | 31 | |

Print pattern RIVE



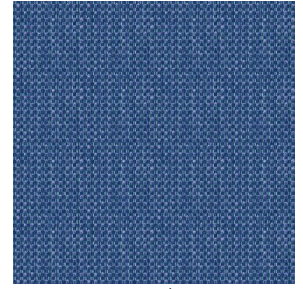
RIVE Fuchsia 33



RIVE Bleu 41



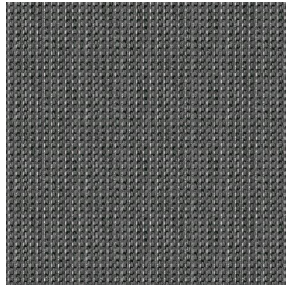
RIVE Jaune 46



RIVE Océan 91



RIVE Sable 67



RIVE Taupe 95



RIVE Gris 97

drapilux
By Sotexpro

DRAPILUX GmbH - Hafenstraße 3, 77694 Kehl - Deutschland

Non-contractual photos and colors - Indicative fitting - Fitting may vary depending on support selected