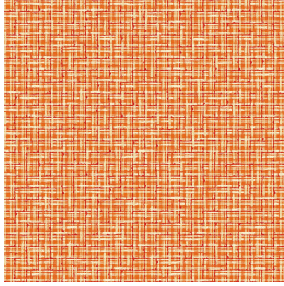




ASTRAL BPI 00
Printing support



SALIN Abricot 08
Print pattern



Visual not taking into account the printing medium, the final rendering may vary according to the chosen medium.

Printing support **ASTRAL BPI 00** Print pattern **SALIN Abricot 08**

Blackout Print Support

Technical properties



Flame retardant



Thermal

Applications Roman blinds - Panel curtains - Curtains

Composition 100% polyester with white flocked acrylic backing

Weight 280 g/m²

Width 280 cm

Fabric direction Room high or standard direction

Fitting ↔ 0.0 cm ↓ 0.0 cm

Maintenance advice     

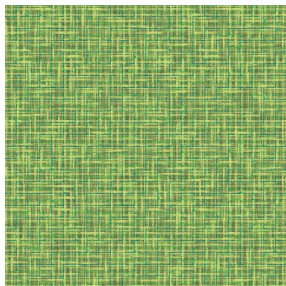
Label

Minimum order 25 linear(s) meter(s)

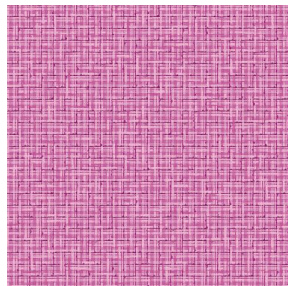
Technical characteristics

Flame retardant	EN13773 : 2003 Class 1 / BS 5867 TYPE C / B1 / IMO PASS / UNI 8456 / 9174 Classe Uno	
Optical index	Light reflexion :	82 %
	Light absorption :	18 %
	Light transmission :	0 %
Thermal index	Solar reflexion :	74 %
	Solar absorption :	26 %
	Solar transmission :	0 %
	UV transmission :	0 %
	Gtot :	Gt 33 % Fc 55 %
Resilience	Lightfastness (units Class/8)	5
	Dimentional Stability (%)	
	Warp	-0,5
	Weft	0
	Breaking Elongation	
	Warp	26
	Weft	15
	Breaking load (daN)	
		Warp 62
		Weft 31

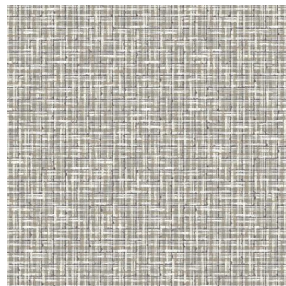
Print pattern SALIN



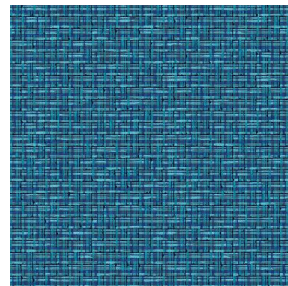
SALIN Anis 62



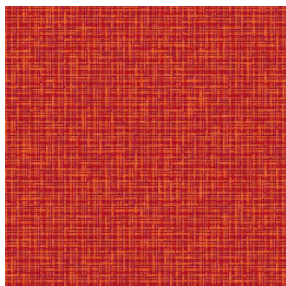
SALIN Fuchsia 33



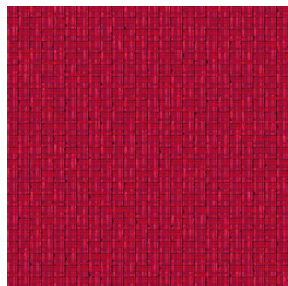
SALIN Naturel 26



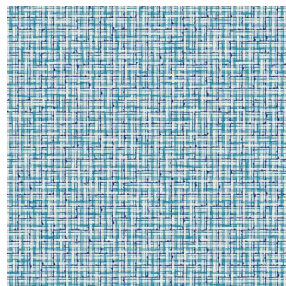
SALIN Océan 91



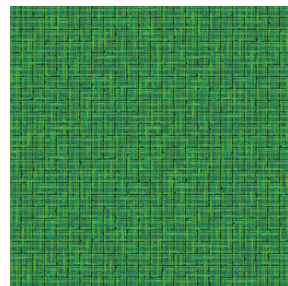
SALIN Orange 15



SALIN Rouge 21



SALIN Turquoise 53



SALIN Vert 24

drapilux
By Sotexpro

DRAPILUX GmbH - Hafenstraße 3, 77694 Kehl - Deutschland

Non-contractual photos and colors - Indicative fitting - Fitting may vary depending on support selected