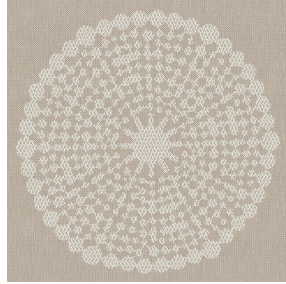




ASTRAL BPI 00
Printing support



ANGELE Sable 67
Print pattern



Printing support **ASTRAL BPI 00** Print pattern **ANGELE Sable 67**

Blackout Print Support

Technical properties



Flame retardant



Thermal

Applications Roman blinds - Panel curtains - Curtains

Composition 100% polyester with white flocked acrylic backing

Weight 280 g/m²

Width 280 cm

Fabric direction Room high or standard direction

Fitting ↔ 30.0 cm ↓ 30.0 cm

Maintenance advice     

Label

Minimum order 25 linear(s) meter(s)



Visual not taking into account the printing medium, the final rendering may vary according to the chosen medium.

Technical characteristics

Flame retardant

EN13773 : 2003 Class 1 / BS 5867 TYPE C / B1 / IMO PASS / UNI 8456 / 9174 Classe Uno

Optical index

Light reflexion : **82 %**
Light absorption : **18 %**
Light transmission : **0 %**

Thermal index

Solar reflexion : **74 %**
Solar absorption : **26 %**
Solar transmission : **0 %**
UV transmission : **0 %**
Gtot : **Gt 33 % Fc 55 %**

Resilience

Lightfastness (units Class/8) **5**
Dimensional Stability (%)
Warp **-0,5**
Weft **0**
Breaking Elongation
Warp **26**
Weft **15**
Breaking load (daN)
Warp **62**
Weft **31**

Print pattern ANGELE



ANGELE Océan 91



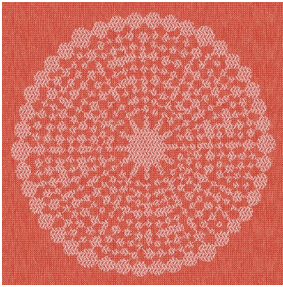
ANGELE Taupe 95



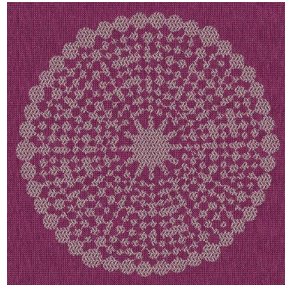
ANGELE Anis 62



ANGELE Fuchsia 33



ANGELE Orange 15



ANGELE Prune 84



ANGELE Turquoise 53



ANGELE Vert 24