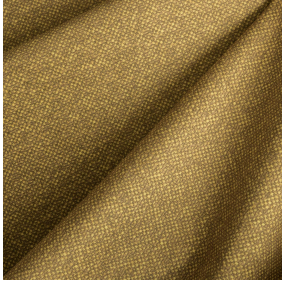




3141 bpi 00
Printing support



ANATOLE Or 94
Print pattern



Printing support 3141 bpi 00 Print pattern ANATOLE Or 94

Sheer fabric support for digital printing.

Technical properties



Flame retardant Transparent

Applications Roman blinds - Panel curtains - Curtains

Composition polyester/polyester FR

Weight 50 g/m²

Width 290 cm

Fabric direction Room High Direction

Fitting ↔ cm ↓ cm

Maintenance advice     

Label France Terre Textile / OEKO-TEX STANDARD 100

Minimum order 25 linear(s) meter(s)



Visual not taking into account the printing medium, the final rendering may vary according to the chosen medium.

Technical characteristics

| | | |
|------------------|-------------------------------|-----------------|
| Flame retardant | M1 / B1 / IMO PASS | |
| Optical index | Light reflexion : | 25 % |
| | Light absorption : | 4 % |
| | Light transmission : | 71 % |
| Transparent veil | Yes | |
| Thermal index | Solar reflexion : | 25 % |
| | Solar absorption : | 3 % |
| | Solar transmission : | 72 % |
| | UV transmission : | 65 % |
| | Gtot : | Gt 50 % Fc 85 % |
| Resilience | Lightfastness (units Class/8) | 6 |
| | Dimensional Stability (%) | |
| | Warp | -1 |
| | Weft | 0 |
| | Breaking Elongation | |
| | Warp | 28 |
| | Weft | 34 |
| | Breaking load (daN) | |
| | Warp | 30 |
| Weft | 36 | |

Print pattern ANATOLE



ANATOLE Naturel 26



ANATOLE lin 11



ANATOLE Ficelle 09



ANATOLE Celadon 135



ANATOLE Océan 91



ANATOLE Titanium 98



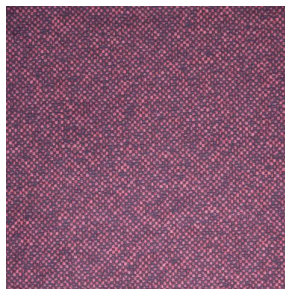
ANATOLE Cactus 36



ANATOLE mousse 92



ANATOLE Chaudron
118



ANATOLE Amarante
108



ANATOLE Taupe 95