



3141 bpi 00
Printing support



SALIN Anis 62
Print pattern



Printing support 3141 bpi 00 Print pattern SALIN Anis 62

Sheer fabric support for digital printing.

Technical properties



Flame retardant Transparent

Applications Roman blinds - Panel curtains - Curtains

Composition polyester/polyester FR

Weight 50 g/m²

Width 290 cm

Fabric direction Room High Direction

Fitting ↔ 0.0 cm ↓ 0.0 cm

Maintenance advice

Label France Terre Textile / OEKO-TEX STANDARD 100

Minimum order 25 linear(s) meter(s)

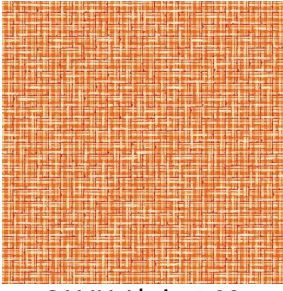


Visual not taking into account the printing medium, the final rendering may vary according to the chosen medium.

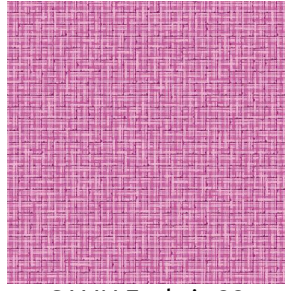
Technical characteristics

Flame retardant	M1 / B1 / IMO PASS	
Optical index	Light reflexion :	25 %
	Light absorption :	4 %
	Light transmission :	71 %
Transparent veil	Yes	
Thermal index	Solar reflexion :	25 %
	Solar absorption :	3 %
	Solar transmission :	72 %
	UV transmission :	65 %
	Gtot :	Gt 50 % Fc 85 %
Resilience	Lightfastness (units Class/8)	6
	Dimensional Stability (%)	
	Warp	-1
	Weft	0
	Breaking Elongation	
	Warp	28
	Weft	34
	Breaking load (daN)	
	Warp	30
Weft	36	

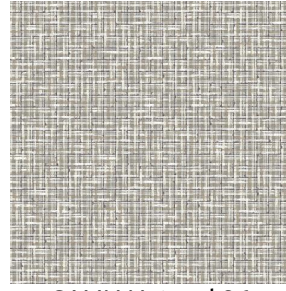
Print pattern SALIN



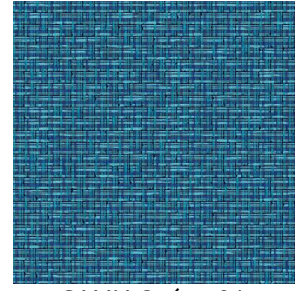
SALIN Abricot 08



SALIN Fuchsia 33



SALIN Naturel 26



SALIN Océan 91



SALIN Orange 15



SALIN Rouge 21



SALIN Turquoise 53



SALIN Vert 24

drapilux
By Sotexpro

DRAPILUX GmbH - Hafenstraße 3, 77694 Kehl - Deutschland

Non-contractual photos and colors - Indicative fitting - Fitting may vary depending on support selected