

# VEGA ELAINA 2165



VEGA ELAINA 2165  
Coco 142



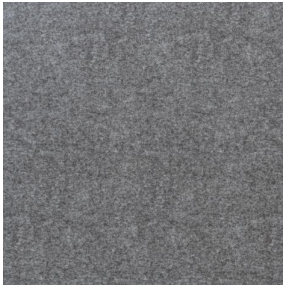
VEGA ELAINA 2165  
Galet 147



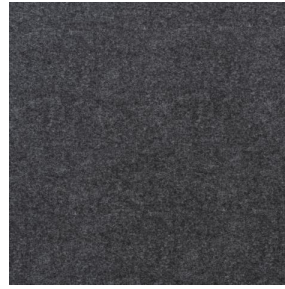
VEGA ELAINA 2165  
Peau 201



VEGA ELAINA 2165  
Souris 31



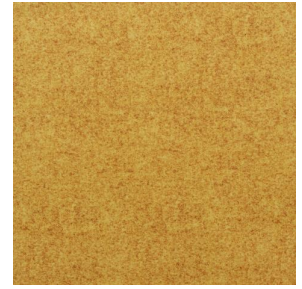
VEGA ELAINA 2165  
Tourterelle 138



VEGA ELAINA 2165  
Cendre 145



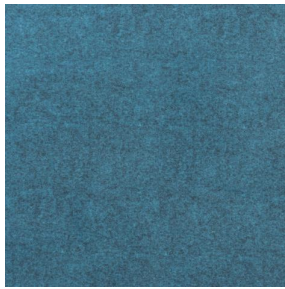
VEGA ELAINA 2165  
Caramel 174



VEGA ELAINA 2165  
Banane 160



VEGA ELAINA 2165 Kaki  
148



VEGA ELAINA 2165  
Prusse 158



VEGA ELAINA 2165  
Indigo 144



# VEGA ELAINA 2165 Poterie 167

## Technical properties

Applications Roman blinds - Panel curtains - Curtains

Composition 100% polyester with white flocked acrylic backing

Weight 390 g/m<sup>2</sup> Width 260 cm

Fabric direction Standard Direction Fitting ↔ cm ↓ cm

Maintenance advice     

Minimum order 25 linear(s) meter(s)

## Technical characteristics

Flame retardant

EN13773 : 2003 Class 1 / BS 5867 TYPE B / B1 / IMO PASS

Resilience

Lightfastness (units Class/8)

4

Dimensional Stability (%)

Warp

-1

Weft

0

Breaking Elongation

Warp

69

Weft

106

Breaking load (daN)

Warp

52

Weft

41

**drapilux**  
By Sotexpro

DRAPILUX GmbH - Hafenstraße 3, 77694 Kehl - Deutschland

Non-contractual photos and colors - Indicative fitting - Fitting may vary depending on support selected