

VEGA ELAINA 2165



VEGA ELAINA 2165
Coco 142



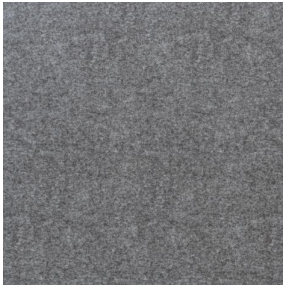
VEGA ELAINA 2165
Galet 147



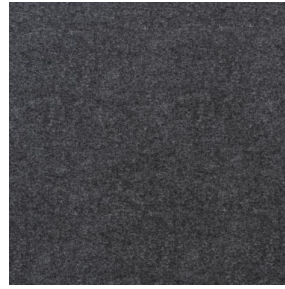
VEGA ELAINA 2165
Peau 201



VEGA ELAINA 2165
Souris 31



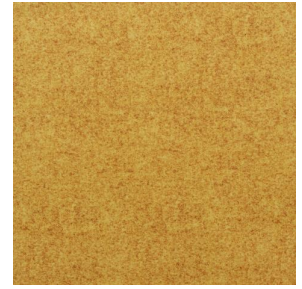
VEGA ELAINA 2165
Tourterelle 138



VEGA ELAINA 2165
Cendre 145



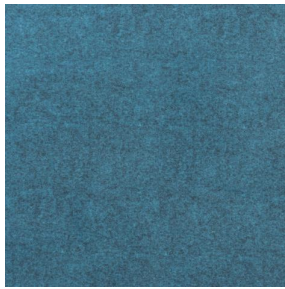
VEGA ELAINA 2165
Poterie 167



VEGA ELAINA 2165
Banane 160



VEGA ELAINA 2165 Kaki
148



VEGA ELAINA 2165
Prusse 158



VEGA ELAINA 2165
Indigo 144



VEGA ELAINA 2165 Caramel 174

Technical properties

Applications Roman blinds - Panel curtains - Curtains

Composition 100% polyester with white flocked acrylic backing

Weight 390 g/m² Width 260 cm

Fabric direction Standard Direction Fitting ↔ cm ↓ cm

Maintenance advice     

Minimum order 25 linear(s) meter(s)

Technical characteristics

Flame retardant

EN13773 : 2003 Class 1 / BS 5867 TYPE B / B1 / IMO PASS

Resilience

Lightfastness (units Class/8)

4

Dimensional Stability (%)

Warp

-1

Weft

0

Breaking Elongation

Warp

69

Weft

106

Breaking load (daN)

Warp

52

Weft

41

drapilux
By Sotexpro

DRAPILUX GmbH - Hafenstraße 3, 77694 Kehl - Deutschland

Non-contractual photos and colors - Indicative fitting - Fitting may vary depending on support selected