

SIENTO LITO



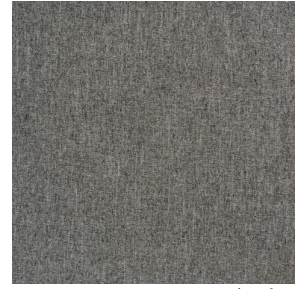
SIENTO LITO Girofle
186



SIENTO LITO Souris 31



SIENTO LITO Taupe 95



SIENTO LITO Minéral
157



SIENTO LITO Cachou
159



SIENTO LITO Poivre 181



SIENTO LITO Sapin 126



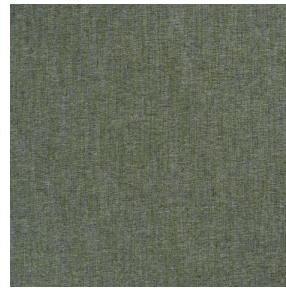
SIENTO LITO Lichen 156



SIENTO LITO Cuivre 50



SIENTO LITO Kaki 148



SIENTO LITO Lierre 124



SIENTO LITO Brousse
192



SIENTO LITO Cordage
172



SIENTO LITO Sahara
169



SIENTO LITO Lin 11



SIENTO LITO Hortensia
134



SIENTO LITO Lilas 19

drapilux
By Sotexpro

DRAPILUX GmbH - Hofenstraße 3, 77694 Kehl - Deutschland

Non-contractual photos and colors - Indicative fitting - Fitting may vary depending on support selected



SIENTO LITO Poireau 162

Light-filtering fabric made from recycled yarns. The proportion of recycled material and the manufacturing process of the yarn used to weave this quality can cause slight color variations between different batches of fabric.

Technical properties



Flame retardant








Recycled fabrics

Applications Roman blinds - Panel curtains - Curtains - Decorative frames

Composition 100% FR polyester including 90% recycled material

Weight 335 g/m² **Width** 280 cm

Fabric direction Room High Direction **Fitting** ↔ cm ↓ cm

Maintenance advice     

Labels France Terre Textile (R016)

Certifications OEKO-TEX STANDARD 100 Recyclé (CQ 1006/2)

Minimum order 1 linear(s) meter(s)

Technical characteristics

Flame retardant	M1 / B1 / IMO PASS / UNI 8456 / 9174 Classe Uno
Acoustic	Noise reduction coefficient (NRC) : 0.76
	Weighted sound absorption coefficient (a _w) : 0.70
	Acoustic absorption class (a _w) : C
Optical index	Light reflexion : 25 %
	Light absorption : 71 %
	Light transmission : 4 %
Thermal index	Solar reflexion : 41 %
	Solar absorption : 45 %
	Solar transmission : 14 %
	UV transmission : 2 %
	Gtot : Gt 44 % Fc 74 %
Resilience	Lightfastness (units Class/8) 5
	Pilling 1
	Dimensional Stability (%)
	Warp -1
	Weft -0.5
	Martindale (Cycles) 20000
	Breaking Elongation
	Warp 49
	Weft 34
	Breaking load (daN)
	Warp 140
Weft 79	

drapilux
By Sotexpro

DRAPILUX GmbH - Hofenstraße 3, 77694 Kehl - Deutschland

Non-contractual photos and colors - Indicative fitting - Fitting may vary depending on support selected