

# SIENTO LITO



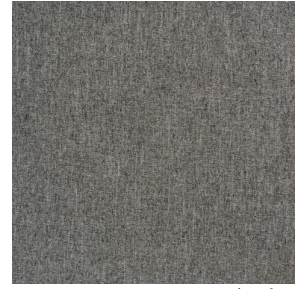
SIENTO LITO Girofle  
186



SIENTO LITO Souris 31



SIENTO LITO Taupe 95



SIENTO LITO Minéral  
157



SIENTO LITO Cachou  
159



SIENTO LITO Poivre 181



SIENTO LITO Sapin 126



SIENTO LITO Poireau  
162



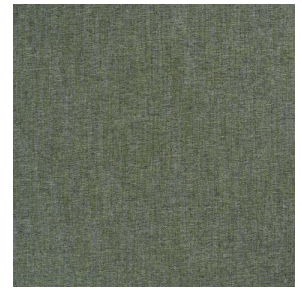
SIENTO LITO Lichen 156



SIENTO LITO Cuivre 50



SIENTO LITO Kaki 148



SIENTO LITO Lierre 124



SIENTO LITO Cordage  
172



SIENTO LITO Sahara  
169



SIENTO LITO Lin 11



SIENTO LITO Hortensia  
134

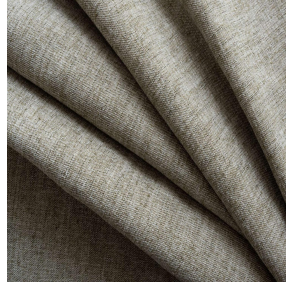


SIENTO LITO Lilas 19

**drapilux**  
By Sotexpro

DRAPILUX GmbH - Hofenstraße 3, 77694 Kehl - Deutschland

Non-contractual photos and colors - Indicative fitting - Fitting may vary depending on support selected



# SIENTO LITO Brousse 192

Light-filtering fabric made from recycled yarns. The proportion of recycled material and the manufacturing process of the yarn used to weave this quality can cause slight color variations between different batches of fabric.

## Technical properties



Flame retardant








Recycled fabrics

**Applications** Roman blinds - Panel curtains - Curtains - Decorative frames

**Composition** 100% FR polyester including 90% recycled material

**Weight** 335 g/m<sup>2</sup> **Width** 280 cm

**Fabric direction** Room High Direction **Fitting** ↔ cm ↓ cm

**Maintenance advice**     

**Labels** France Terre Textile (R016)

**Certifications** OEKO-TEX STANDARD 100 Recyclé (CQ 1006/2)

**Minimum order** 1 linear(s) meter(s)

## Technical characteristics

Flame retardant	M1 / B1 / IMO PASS / UNI 8456 / 9174 Classe Uno
Acoustic	Noise reduction coefficient (NRC) : <b>0.76</b>
	Weighted sound absorption coefficient (a <sub>w</sub> ) : <b>0.70</b>
	Acoustic absorption class (a <sub>w</sub> ) : <b>C</b>
Optical index	Light reflexion : <b>25 %</b>
	Light absorption : <b>71 %</b>
	Light transmission : <b>4 %</b>
Thermal index	Solar reflexion : <b>41 %</b>
	Solar absorption : <b>45 %</b>
	Solar transmission : <b>14 %</b>
	UV transmission : <b>2 %</b>
	Gtot : <b>Gt 44 % Fc 74 %</b>
Resilience	Lightfastness (units Class/8) <b>5</b>
	Pilling <b>1</b>
	Dimensional Stability (%)
	Warp <b>-1</b>
	Weft <b>-0.5</b>
	Martindale (Cycles) <b>20000</b>
	Breaking Elongation
	Warp <b>49</b>
	Weft <b>34</b>
	Breaking load (daN)
	Warp <b>140</b>
Weft <b>79</b>	

**drapilux**  
By Sotexpro

DRAPILUX GmbH - Hofenstraße 3, 77694 Kehl - Deutschland

Non-contractual photos and colors - Indicative fitting - Fitting may vary depending on support selected