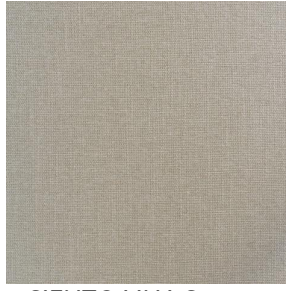


SIENTO LINA



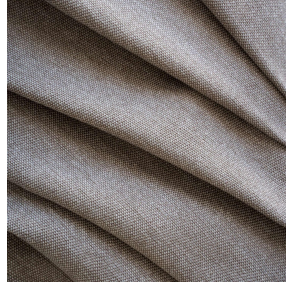
SIENTO LINA Dune 170



SIENTO LINA Savane
185



SIENTO LINA Girofle
186



SIENTO LINA Muscade 175

Heavy linen look canvas, Siento Lina is woven with mixed dyed yarns which gives this textured chiné effect. The proportion of recycled material and the manufacturing process of the yarn used to weave this quality can cause slight color variations between different batches of fabric

Technical properties



Flame retardant



Thermal



Recycled fabrics

Applications Roman blinds - Panel curtains - Curtains - Decorative frames

Composition 100% FR polyester including 35% recycled material

Weight 400 g/m² Width 280 cm

Fabric direction Room High Direction Fitting ↔ cm ↓ cm

Maintenance advice

Labels France Terre Textile (R016)

Certifications OEKO-TEX STANDARD 100 Recyclé (CQ 1006/2)

Minimum order 1 linear(s) meter(s)

Technical characteristics

Flame retardant	M1 / B1 / IMO PASS / UNI 8456 / 9174 Classe Uno
Acoustic	Noise reduction coefficient (NRC) : 0.61 Weighted sound absorption coefficient (a _w) : 0.50 Acoustic absorption class (a _w) : D
Optical index	Light reflexion : 25 % Light absorption : 65 % Light transmission : 10 %
Thermal index	Solar reflexion : 45 % Solar absorption : 36 % Solar transmission : 19 % UV transmission : 8 % Gtot : Gt 42 % Fc 72 %
Resilience	Lightfastness (units Class/8) 6 Pilling 1 Dimensional Stability (%) Warp -0,5 Weft -1,5 Martindale (Cycles) 60000 Breaking Elongation Warp 49 Weft 24 Breaking load (daN) Warp 170 Weft 210

drapilux
By Sotexpro

DRAPILUX GmbH - Hofenstraße 3, 77694 Kehl - Deutschland

Non-contractual photos and colors - Indicative fitting - Fitting may vary depending on support selected