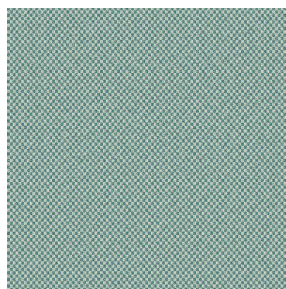
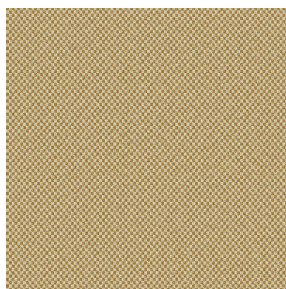


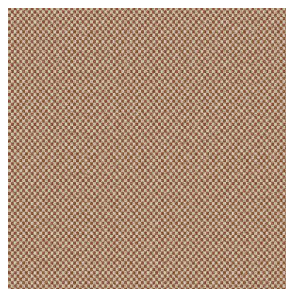
# SIENTO COLOR



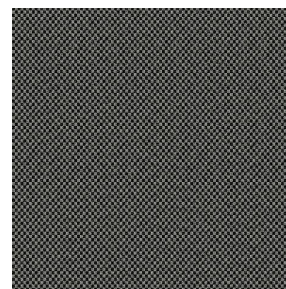
SIENTO COLOR Lagon  
110



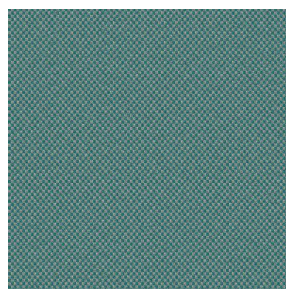
SIENTO COLOR Or 94



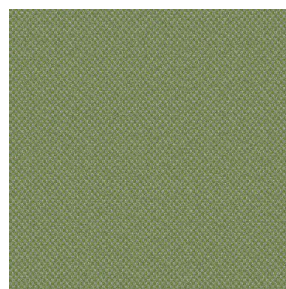
SIENTO COLOR  
Châtaigne 55



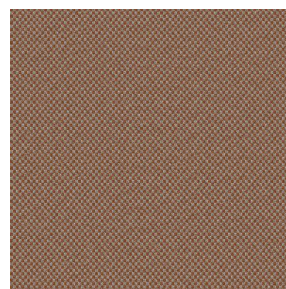
SIENTO COLOR  
Titanium 98



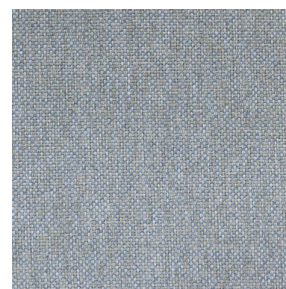
SIENTO COLOR Céladon  
135



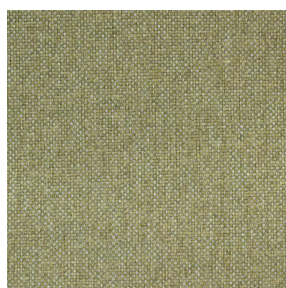
SIENTO COLOR Mousse  
92



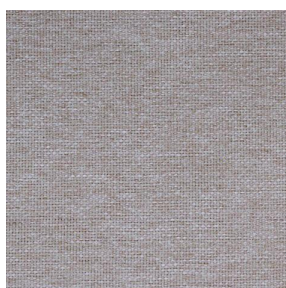
SIENTO COLOR Terre  
107



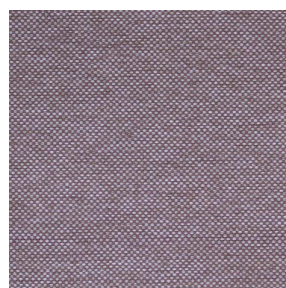
SIENTO COLOR Faïence  
149



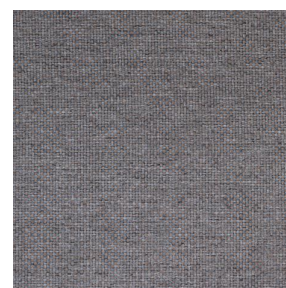
SIENTO COLOR Tilleul  
103



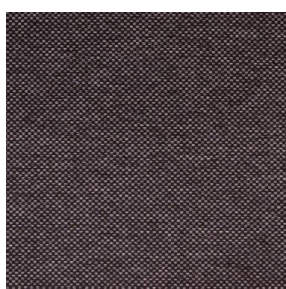
SIENTO COLOR Lilas 19



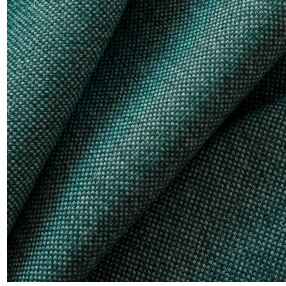
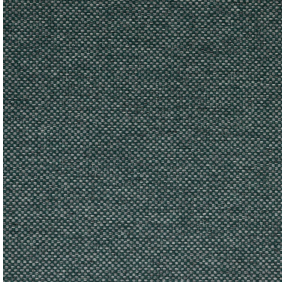
SIENTO COLOR  
Hortensia 134



SIENTO COLOR Bronze  
13



SIENTO COLOR Prune  
84



# SIENTO COLOR Sapin 126

Wool look heavy canvas, Siento Color is woven with coloured mixed dyed yarns which gives this textured chiné and coloured effect.

## Technical properties



Flame retardant



Recycled fabrics

**Applications** Cushions - Decorative frames - Roman blinds - Panel curtains -  
Bedspreads - Seating - Bed runners - Curtains

**Composition** 34% recycled polyester FR /66% polyester FR

**Weight** 370 g/m<sup>2</sup> **Width** 290 cm

**Fabric direction** Room high or standard direction **Fitting** ↔ cm ↓ cm

**Maintenance advice**     

**Labels** France Terre Textile (R016)

**Certifications** OEKO-TEX STANDARD 100 Recyclé (CQ 1006/2)

**Minimum order** 1 linear(s) meter(s)

## Technical characteristics

Flame retardant	M1 / B1 / IMO PASS	
Acoustic	Noise reduction coefficient (NRC) :	<b>0.71</b>
	Weighted sound absorption coefficient (a <sub>w</sub> ) :	<b>0.60</b>
	Acoustic absorption class (a <sub>w</sub> ) :	<b>C</b>
Resilience	Lightfastness (units Class/8)	<b>6</b>
	Pilling	<b>4</b>
	Dimensional Stability (%)	
	Warp	<b>-2</b>
	Weft	<b>-1</b>
	Martindale (Cycles)	<b>90000</b>
	Breaking Elongation	
	Warp	<b>49</b>
	Weft	<b>44</b>
	Breaking load (daN)	
Warp	<b>160</b>	
Weft	<b>210</b>	

**drapilux**  
By Sotexpro

DRAPILUX GmbH - Hafenstraße 3, 77694 Kehl - Deutschland

Non-contractual photos and colors - Indicative fitting - Fitting may vary depending on support selected