

SIENTO COLOR



SIENTO COLOR Lagon
110



SIENTO COLOR
Châtaigne 55



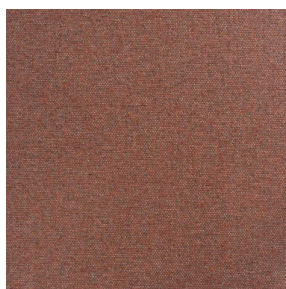
SIENTO COLOR
Titanium 98



SIENTO COLOR Céladon
135



SIENTO COLOR Mousse
92



SIENTO COLOR Terre
107



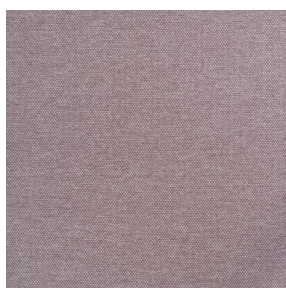
SIENTO COLOR Faïence
149



SIENTO COLOR Tilleul
103



SIENTO COLOR Lilas 19



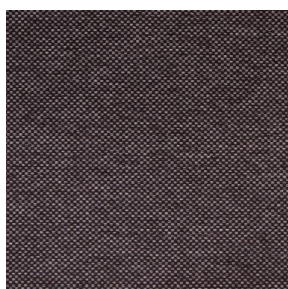
SIENTO COLOR
Hortensia 134



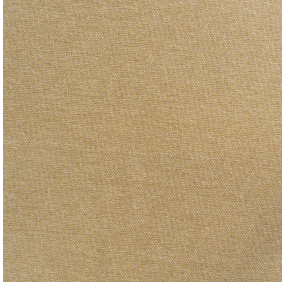
SIENTO COLOR Sapin
126



SIENTO COLOR Bronze
13



SIENTO COLOR Prune
84



SIENTO COLOR Or 94

Wool look heavy canvas, Siento Color is woven with coloured mixed dyed yarns which gives this textured chiné and coloured effect. The proportion of recycled material and the manufacturing process of the yarn used to weave this quality can cause slight color variations between different batches of fabric

Technical properties



Flame retardant



Recycled fabrics

Applications Roman blinds - Panel curtains - Bedspreads - Seating - Bed runners - Curtains - Cushions - Decorative frames

Composition 100% FR polyester including 50% recycled material

Weight 435 g/m² 1218 g/ml **Width** 280 cm

Fabric direction Room high or standard direction **Fitting** ↔ cm ↑ cm

Maintenance advice       

Labels France Terre Textile (R016)

Certifications OEKO-TEX STANDARD 100 Recyclé (CQ 1006/2)

Minimum order 1 linear(s) meter(s)

Technical characteristics

Flame retardant

M1 / B1 / IMO PASS

Acoustic

Noise reduction coefficient (NRC) : **0.71**

Weighted sound absorption coefficient (a_w) : **0.60**

Acoustic absorption class (a_w) : **C**

Resilience

Lightfastness (units Class/8) **6**

Pilling **4**

Dimensional Stability (%)

Warp **-2**

Weft **-1**

Martindale (Cycles) **90000**

Breaking Elongation

Warp **49**

Weft **44**

Breaking load (daN)

Warp **160**

Weft **210**

drapilux
By Sotexpro

DRAPILUX GmbH - Hafenstraße 3, 77694 Kehl - Deutschland

Non-contractual photos and colors - Indicative fitting - Fitting may vary depending on support selected