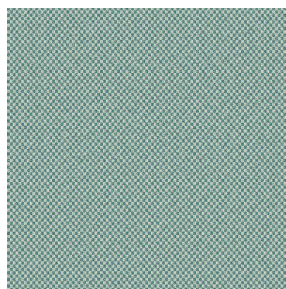
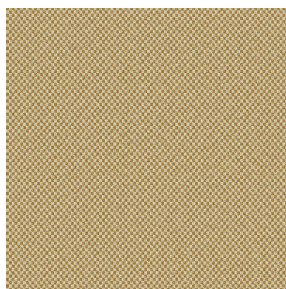


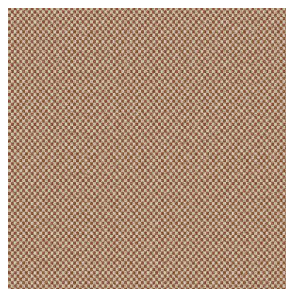
SIENTO COLOR



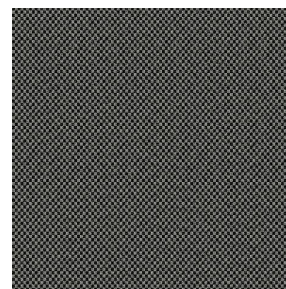
SIENTO COLOR Lagon
110



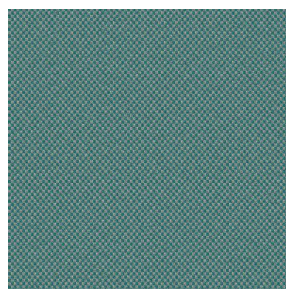
SIENTO COLOR Or 94



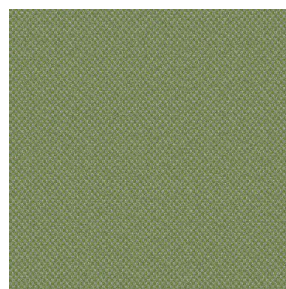
SIENTO COLOR
Châtaigne 55



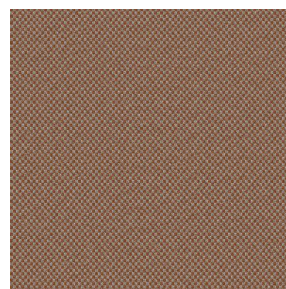
SIENTO COLOR
Titanium 98



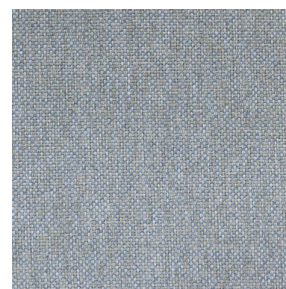
SIENTO COLOR Céladon
135



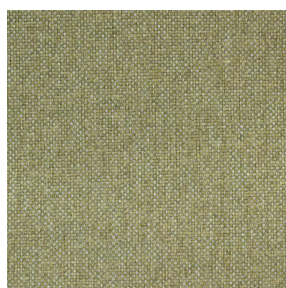
SIENTO COLOR Mousse
92



SIENTO COLOR Terre
107



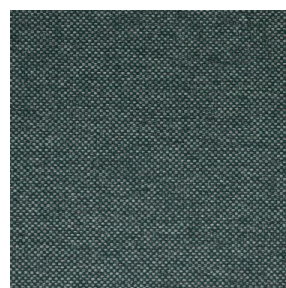
SIENTO COLOR Faïence
149



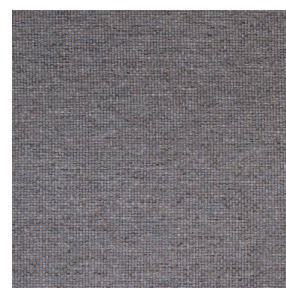
SIENTO COLOR Tilleul
103



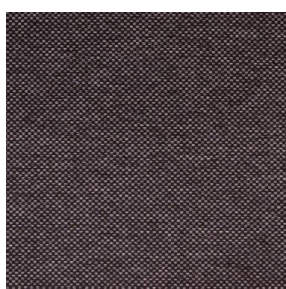
SIENTO COLOR Lilas 19



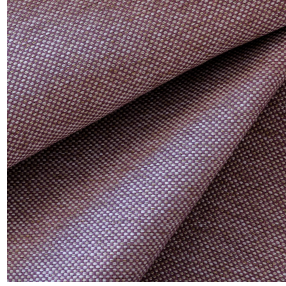
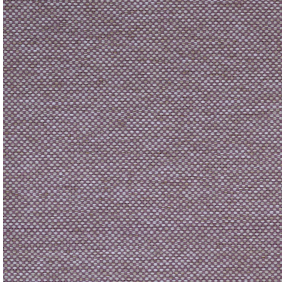
SIENTO COLOR Sapin
126



SIENTO COLOR Bronze
13



SIENTO COLOR Prune
84



SIENTO COLOR Hortensia 134

Wool look heavy canvas, Siento Color is woven with coloured mixed dyed yarns which gives this textured chiné and coloured effect.

Technical properties



Flame retardant






Recycled fabrics

Applications Cushions - Decorative frames - Roman blinds - Panel curtains -
Bedspreads - Seating - Bed runners - Curtains

Composition 34% recycled polyester FR /66% polyester FR

Weight 370 g/m² **Width** 290 cm

Fabric direction Room high or standard direction **Fitting** ↔ cm ↓ cm

Maintenance advice     

Labels France Terre Textile (R016)

Certifications OEKO-TEX STANDARD 100 Recyclé (CQ 1006/2)

Minimum order 1 linear(s) meter(s)

Technical characteristics

Flame retardant

M1 / B1 / IMO PASS

Acoustic

Noise reduction coefficient (NRC) : **0.71**

Weighted sound absorption coefficient (a_w) : **0.60**

Acoustic absorption class (a_w) : **C**

Resilience

Lightfastness (units Class/8) **6**

Pilling **4**

Dimensional Stability (%)

Warp **-2**

Weft **-1**

Martindale (Cycles) **90000**

Breaking Elongation

Warp **49**

Weft **44**

Breaking load (daN)

Warp **160**

Weft **210**

drapilux
By Sotexpro

DRAPILUX GmbH - Hofenstraße 3, 77694 Kehl - Deutschland

Non-contractual photos and colors - Indicative fitting - Fitting may vary depending on support selected