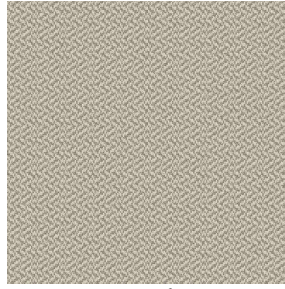


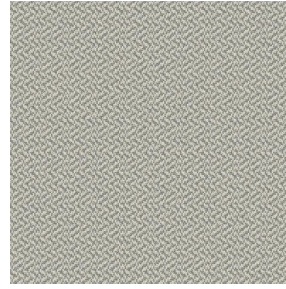
SETO MILO



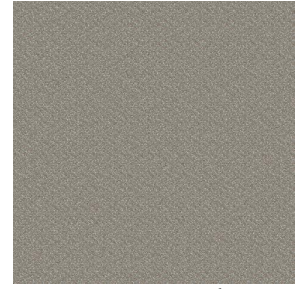
SETO MILO Coco 142



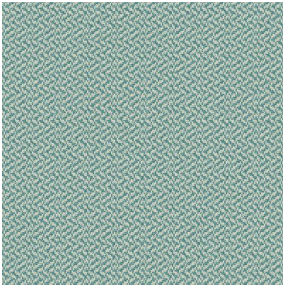
SETO MILO Chanvre 72



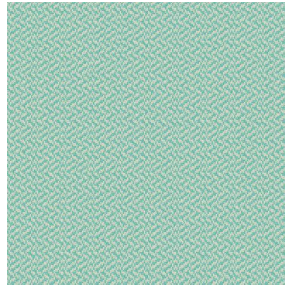
SETO MILO Jute 141



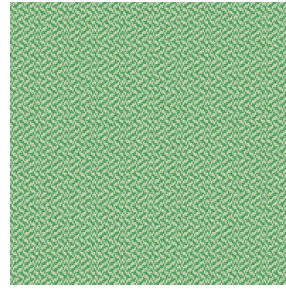
SETO MILO Sisal 140



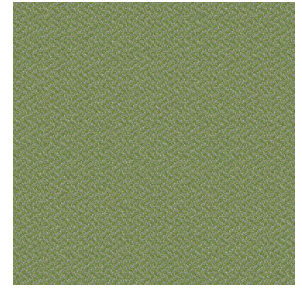
SETO MILO Lagon 110



SETO MILO Jade 116



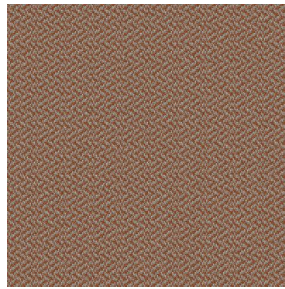
SETO MILO Prairie 125



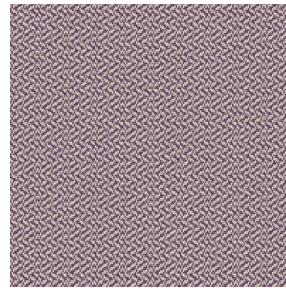
SETO MILO Mousse 92



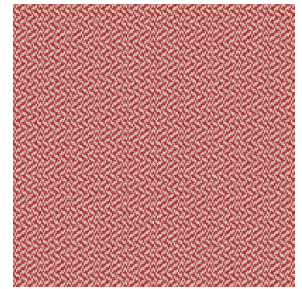
SETO MILO Mastic 48



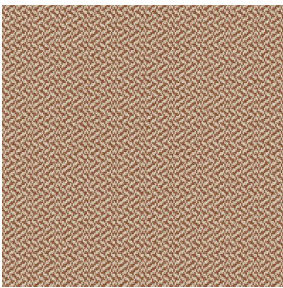
SETO MILO Terre 107



SETO MILO Saphir 106



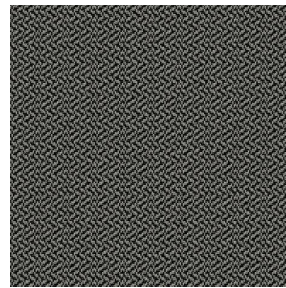
SETO MILO Rouge 21



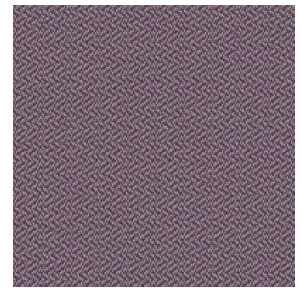
SETO MILO Châtaigne
55



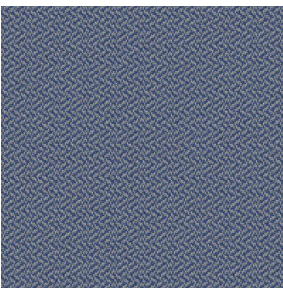
SETO MILO Or 94



SETO MILO Titanium 98



SETO MILO Violine 105

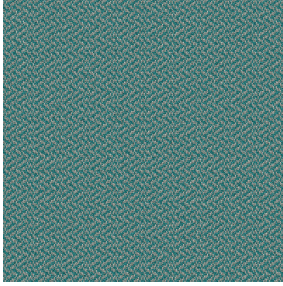


SETO MILO Bleu 41

drapilux
By Sotexpro

DRAPILUX GmbH - Hofenstraße 3, 77694 Kehl - Deutschland

Non-contractual photos and colors - Indicative fitting - Fitting may vary depending on support selected



SETO MILO Celadon 135

Seating fabric

Technical properties



Flame retardant

Applications Roman blinds - Panel curtains - Seating - Bed runners - Curtains - Cushions - Decorative frames

Composition 100% FR polyester

Weight 420 g/m² **Width** 150 cm

Fabric direction Standard Direction **Fitting** ↔ cm ↓ cm

Maintenance advice     

Labels France Terre Textile (R016)

Minimum order 1 linear(s) meter(s)

Technical characteristics

Flame retardant

M1 / IMO PASS

Resilience

Pilling	4
Dimensional Stability (%)	
Warp	-2
Weft	-1
Martindale (Cycles)	70000
Breaking Elongation	
Warp	27
Weft	22
Breaking load (daN)	
Warp	110
Weft	100

drapilux
By Sotexpro

DRAPILUX GmbH - Hafenstraße 3, 77694 Kehl - Deutschland

Non-contractual photos and colors - Indicative fitting - Fitting may vary depending on supports selected