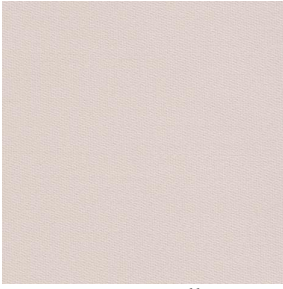
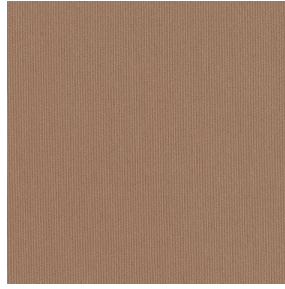


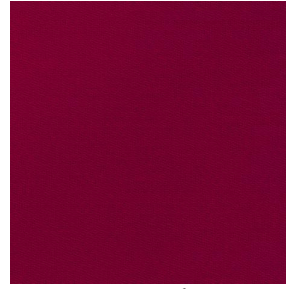
# SADYNA



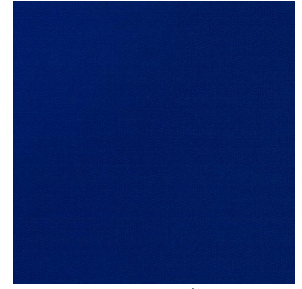
SADYNA Ficelle 09



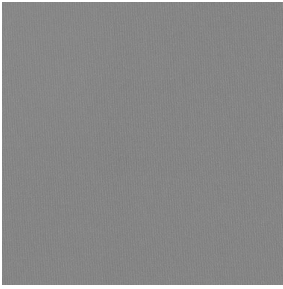
SADYNA Mastic 48



SADYNA Bordeaux 06



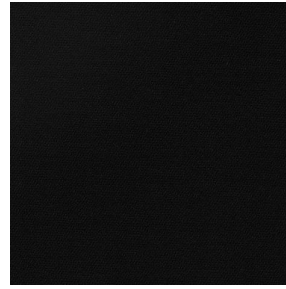
SADYNA Océan 19



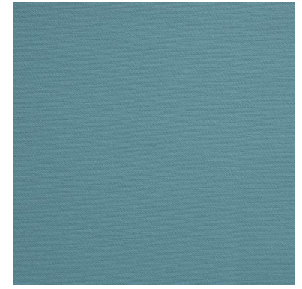
SADYNA Acier 18



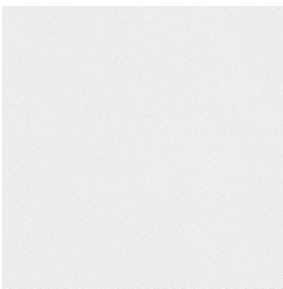
SADYNA Anthracite 38



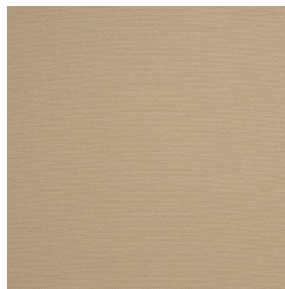
SADYNA Noir 10



SADYNA Glacier 43



SADYNA Blanc 01



SADYNA Paille 83



SADYNA Lie de vin 202



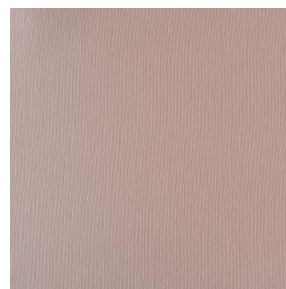
SADYNA Marine 25



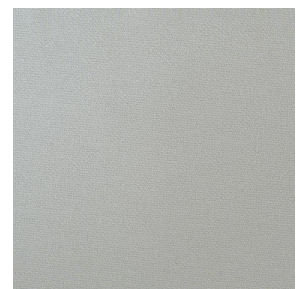
SADYNA Taupe 95



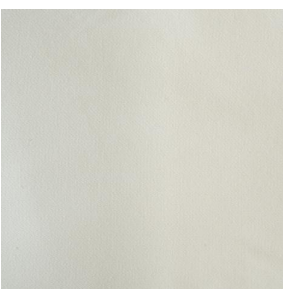
SADYNA Ciel 07



SADYNA Vieux rose 64



SADYNA Argent 73

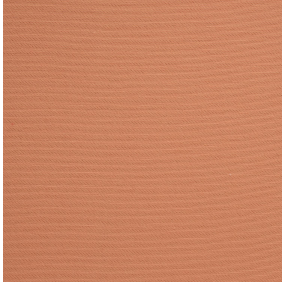


SADYNA Ivoire 115

**drapilux**  
By Sotexpro

DRAPILUX GmbH - Hofenstraße 3, 77694 Kehl - Deutschland

Non-contractual photos and colors - Indicative fitting - Fitting may vary depending on support selected



# SADYNA Safran 49

This plain, twill, light-filtering fabric is a classic. Perfect for simpler designs or to coordinate with our woven Jacquard patterns. Available in several colours.

## Technical properties



Flame retardant



Thermal



Acoustic

**Applications** Roman blinds - Panel curtains - Valences - Bed runners - Curtains - Cushions - Decorative frames

**Composition** 100% FR polyester

**Weight** 320 g/m<sup>2</sup> **Width** 280 cm

**Fabric direction** Room high or standard direction **Fitting** ↔ cm ↓ cm

**Maintenance advice**     

**Labels** France Terre Textile (R016)

**Certifications** OEKO-TEX STANDARD 100 (CQ 1006/1)

**Minimum order** 1 linear(s) meter(s)

## Technical characteristics

Flame retardant	M1 / B1 / IMO PASS
Acoustic	Noise reduction coefficient (NRC) : <b>0.88</b>
	Weighted sound absorption coefficient (a <sub>w</sub> ) : <b>0.85</b>
	Acoustic absorption class (a <sub>w</sub> ) : <b>B</b>
Optical index	Light reflexion : <b>15 %</b>
	Light absorption : <b>84 %</b>
	Light transmission : <b>1 %</b>
Thermal index	Solar reflexion : <b>45 %</b>
	Solar absorption : <b>41 %</b>
	Solar transmission : <b>14 %</b>
	UV transmission : <b>4 %</b>
	Gtot : <b>Gt 42 % Fc 72 %</b>
Resilience	Lightfastness (units Class/8) <b>6</b>
	Pilling <b>2-3</b>
	Dimensional Stability (%)
	Warp <b>-1.5</b>
	Weft <b>0</b>
	Martindale (Cycles) <b>20000</b>
	Breaking Elongation
	Warp <b>24</b>
	Weft <b>22</b>
	Breaking load (daN)
Warp <b>150</b>	
Weft <b>160</b>	

**drapilux**  
By Sotexpro

DRAPILUX GmbH - Hafenstraße 3, 77694 Kehl - Deutschland

Non-contractual photos and colors - Indicative fitting - Fitting may vary depending on support selected