

OPAQ



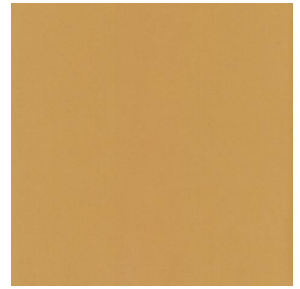
OPAQ Blanc 01



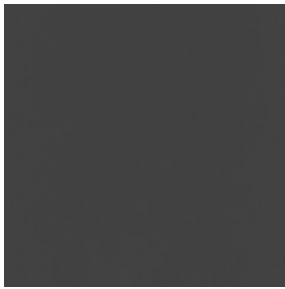
OPAQ Océan 91



OPAQ Arctique 58



OPAQ Abricot 08



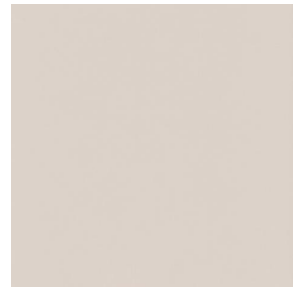
OPAQ Anthracite 38



OPAQ Sienne 29



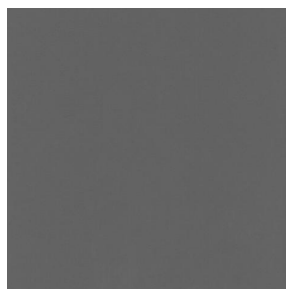
OPAQ Perle 96



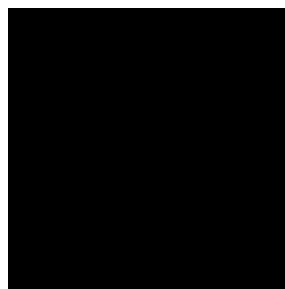
OPAQ Crème 02



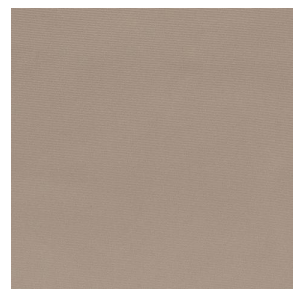
OPAQ Mastic 48



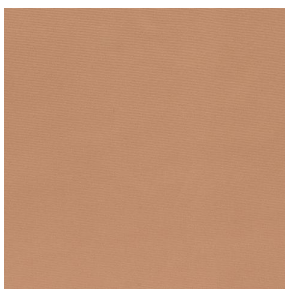
OPAQ Taupe 95



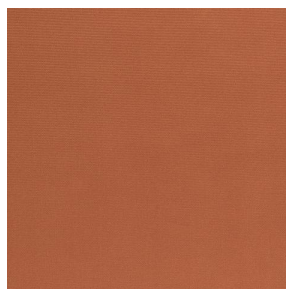
OPAQ Noir 10



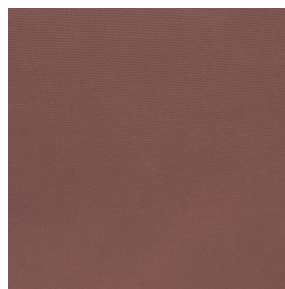
OPAQ Beige 63



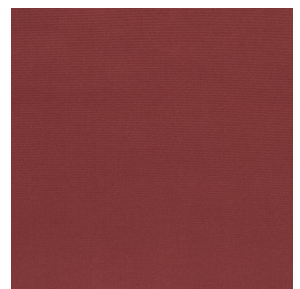
OPAQ Safran 49



OPAQ Terre 107



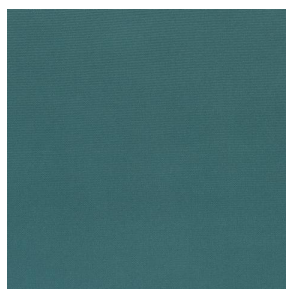
OPAQ Chamois 111



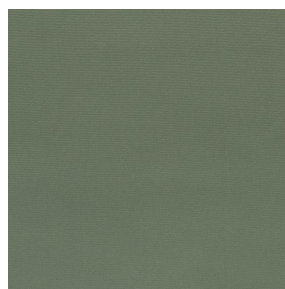
OPAQ Bordeaux 04



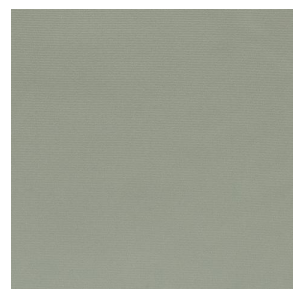
OPAQ Ecume 82



OPAQ Sapin 126



OPAQ Kaki 148



OPAQ Amande 75

drapilux
By Sotexpro

DRAPILUX GmbH - Hofenstraße 3, 77694 Kehl - Deutschland

Non-contractual photos and colors - Indicative fitting - Fitting may vary depending on support selected



OPAQ BPI 00

Unclassified blackout print support

Technical properties

Applications Lining - Curtains - Roman blinds - Panel curtains

Composition 100% polyester with white flocked acrylic backing

Weight 280 g/m² Width 280 cm

Fabric direction Room High Direction Fitting ← cm ↓ cm

Maintenance advice

Minimum order 25 linear(s) meter(s)

Technical characteristics

Flame retardant	Not Classified	
Optical index	Light reflexion :	82 %
	Light absorption :	18 %
	Light transmission :	0 %
Thermal index	Solar reflexion :	74 %
	Solar absorption :	26 %
	Solar transmission :	0 %
	UV transmission :	0 %
	Gtot :	Gt 33 % Fc 55 %
Resilience	Lightfastness (units Class/8)	5
	Dimensional Stability (%)	
	Warp	-0,5
	Weft	0
	Breaking Elongation	
	Warp	26
	Weft	15
	Breaking load (daN)	
	Warp	62
Weft	31	

drapilux
By Sotexpro

DRAPILUX GmbH - Hafenstraße 3, 77694 Kehl - Deutschland

Non-contractual photos and colors - Indicative fitting - Fitting may vary depending on support selected