

OPAQ



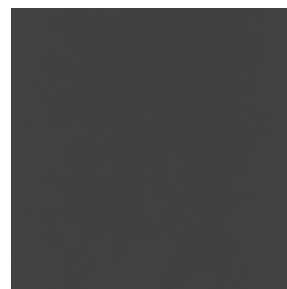
OPAQ Blanc 01



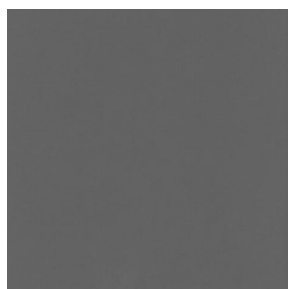
OPAQ Océan 91



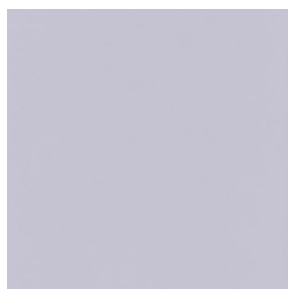
OPAQ Arctique 58



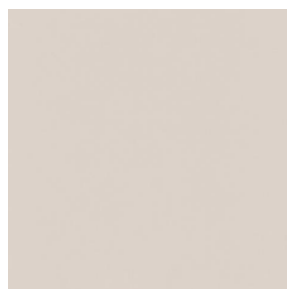
OPAQ Anthracite 38



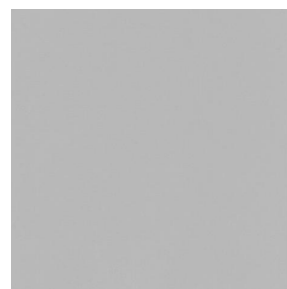
OPAQ Sienne 29



OPAQ Perle 96



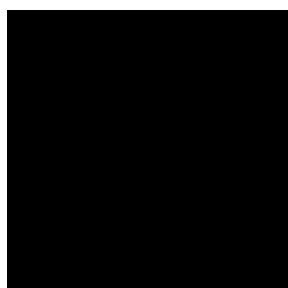
OPAQ Crème 02



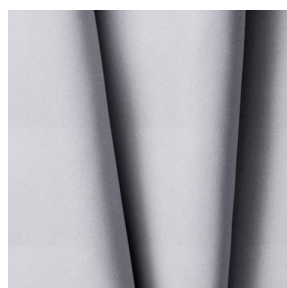
OPAQ Mastic 48



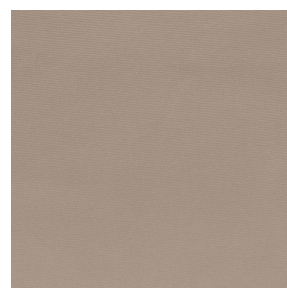
OPAQ Taupe 95



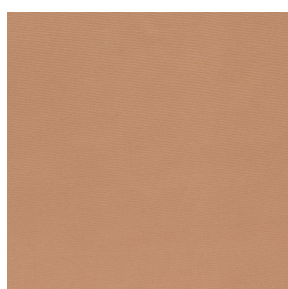
OPAQ Noir 10



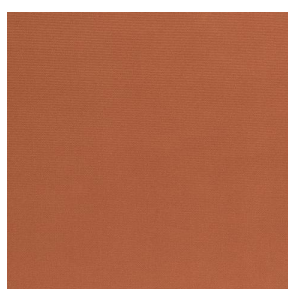
OPAQ BPI 00



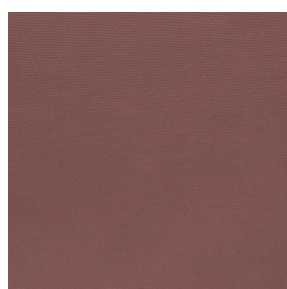
OPAQ Beige 63



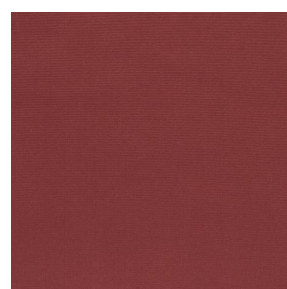
OPAQ Safran 49



OPAQ Terre 107



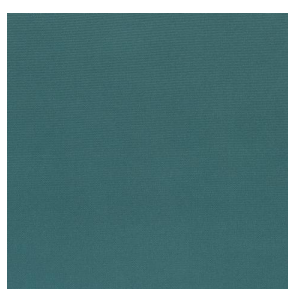
OPAQ Chamois 111



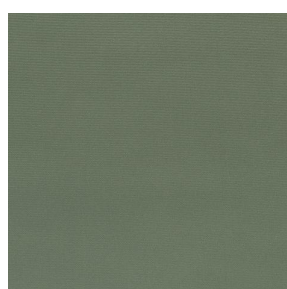
OPAQ Bordeaux 04



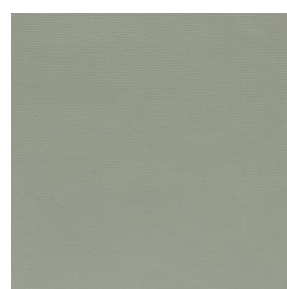
OPAQ Ecume 82



OPAQ Sapin 126



OPAQ Kaki 148

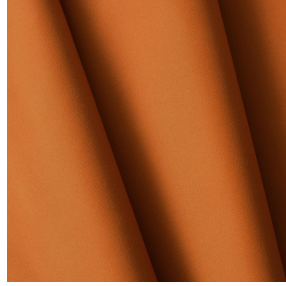
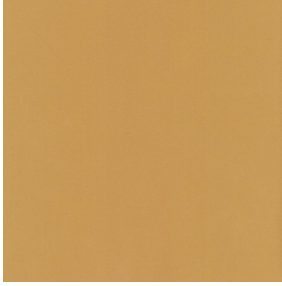


OPAQ Amande 75

drapilux
By Sotexpro

DRAPILUX GmbH - Hafenstraße 3, 77694 Kehl - Deutschland

Non-contractual photos and colors - Indicative fitting - Fitting may vary depending on support selected



OPAQ Abricot 08

This plain blackout fabric has no fire rating.

Technical properties

Applications Roman blinds - Panel curtains - Lining - Curtains

Composition 100% polyester with white flocked acrylic backing

Weight 280 g/m² **Width** 280 cm

Fabric direction Room high or standard direction **Fitting** ↔ cm ↓ cm

Maintenance advice     

Minimum order 25 linear(s) meter(s)

Technical characteristics

Flame retardant	Not Classified	
Optical index	Light reflexion :	82 %
	Light absorption :	18 %
	Light transmission :	0 %
Thermal index	Solar reflexion :	74 %
	Solar absorption :	26 %
	Solar transmission :	0 %
	UV transmission :	0 %
	Gtot :	Gt 33 % Fc 55 %
Resilience	Lightfastness (units Class/8)	5
	Dimensional Stability (%)	
	Warp	-0,5
	Weft	0
	Breaking Elongation	
	Warp	26
	Weft	15
	Breaking load (daN)	
	Warp	62
Weft	31	

drapilux
By Sotexpro

DRAPILUX GmbH - Hafenstraße 3, 77694 Kehl - Deutschland

Non-contractual photos and colors - Indicative fitting - Fitting may vary depending on support selected