

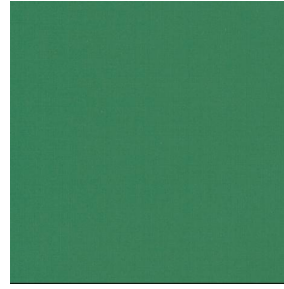
OPALE 2



OPALE 2 Océan 91



OPALE 2 Cyan 90



OPALE 2 Cactus 09



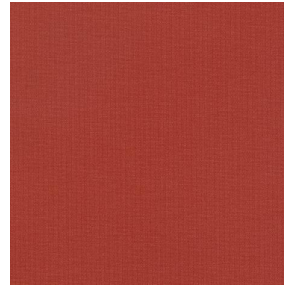
OPALE 2 Mousse 92



OPALE 2 Agrume 69



OPALE 2 Terracotta 65



OPALE 2 Tomette 60



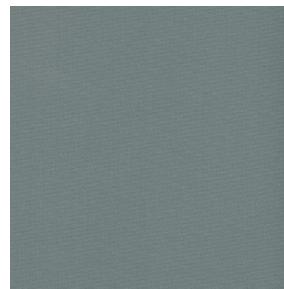
OPALE 2 Pivoine 57



OPALE 2 Rubis 08



OPALE 2 Aubergine 27



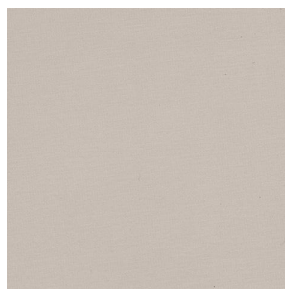
OPALE 2 Anthracite 38



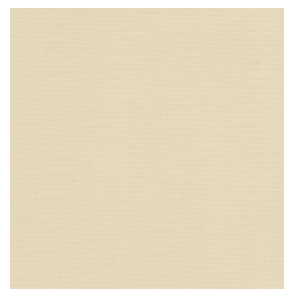
OPALE 2 Souris 40



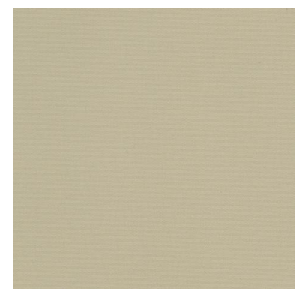
OPALE 2 Nacre 04



OPALE 2 Crème 02



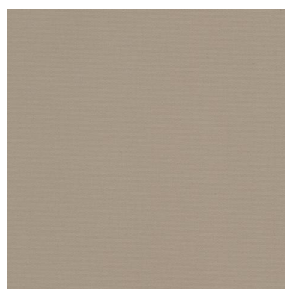
OPALE 2 Sable 67



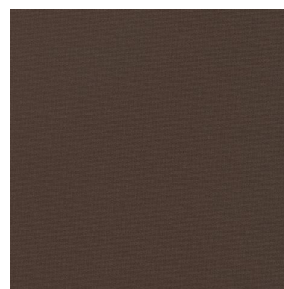
OPALE 2 Beige 63



OPALE 2 Brun 23



OPALE 2 Mastic 48



OPALE 2 Moka 12



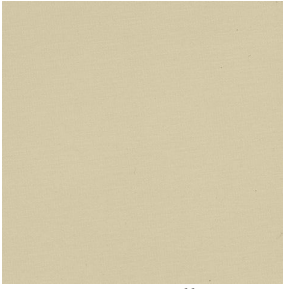
OPALE 2 Marine 25

drapilux
By Sotexpro

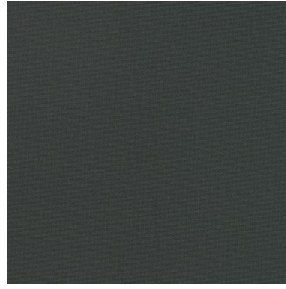
DRAPILUX GmbH - Hofenstraße 3, 77694 Kehl - Deutschland

Non-contractual photos and colors - Indicative fitting - Fitting may vary depending on support selected

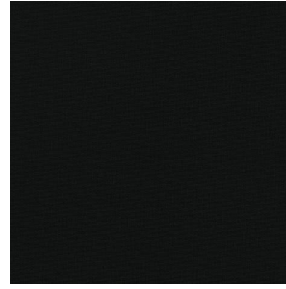
OPALE 2



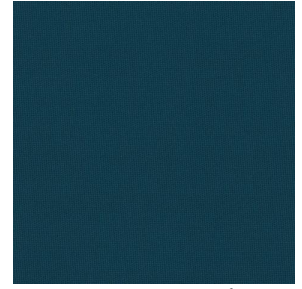
OPALE 2 Paille 06



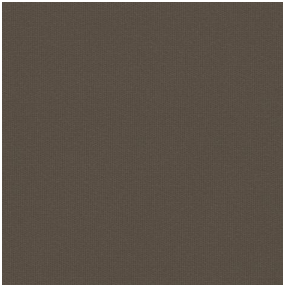
OPALE 2 Titanium 98



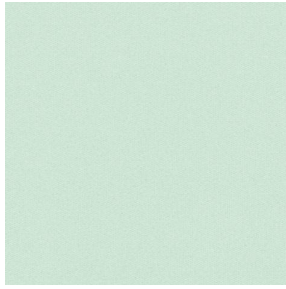
OPALE 2 Noir 36



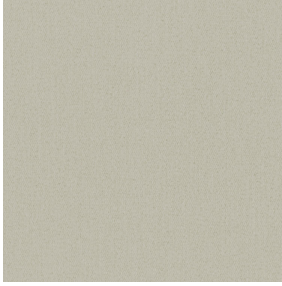
OPALE 2 emeraude 88



OPALE 2 taupe 95



OPALE 2 absinthe 132



OPALE 2 lin 11

This plain fabric blocks out light very effectively and is available in a wide variety of colours.

Technical properties





Flame retardant

Applications Roman blinds - Roller blinds - Panel curtains - Curtains

Composition 100% polyester with white flocked acrylic backing

Weight 290 g/m² **Width** 140 cm

Fabric direction Standard Direction **Fitting** ↔ cm ↓ cm

Maintenance advice      

Minimum order 1 linear(s) meter(s)

Technical characteristics

Flame retardant	M1 / IMO PASS	
Optical index	Light reflexion :	72 %
	Light absorption :	28 %
	Light transmission :	0 %
Thermal index	Solar reflexion :	65 %
	Solar absorption :	35 %
	Solar transmission :	0 %
	UV transmission :	0 %
	Gtot :	Gt 35 % Fc 60 %
Resilience	Lightfastness (units Class/8)	5
	Breaking Elongation	
	Warp	35
	Weft	11

drapilux
By Sotexpro

DRAPILUX GmbH - Hafenstraße 3, 77694 Kehl - Deutschland

Non-contractual photos and colors - Indicative fitting - Fitting may vary depending on support selected