

OPALE 2



OPALE 2 Océan 91



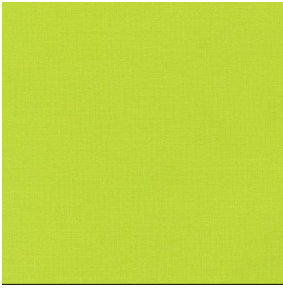
OPALE 2 Cyan 90



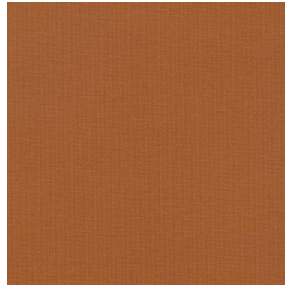
OPALE 2 Cactus 09



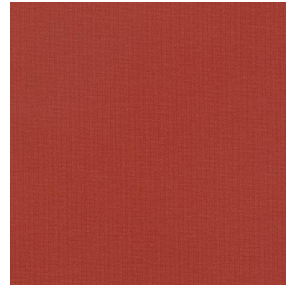
OPALE 2 Mousse 92



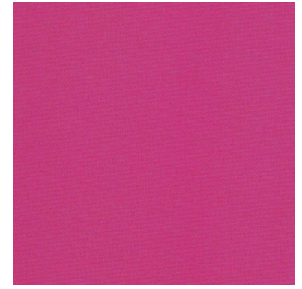
OPALE 2 Agrume 69



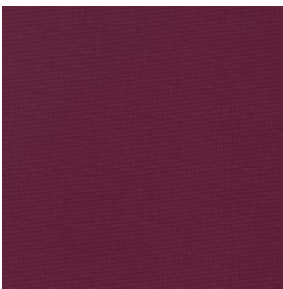
OPALE 2 Terracotta 65



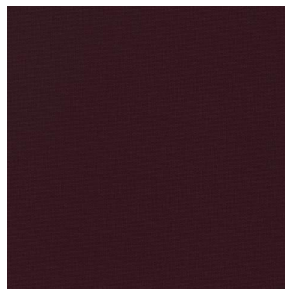
OPALE 2 Tomette 60



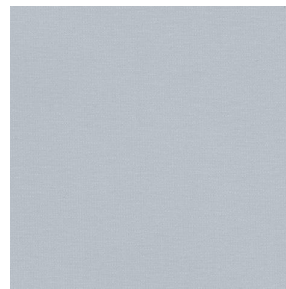
OPALE 2 Pivoine 57



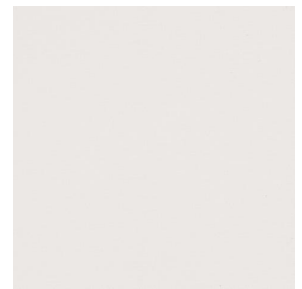
OPALE 2 Rubis 08



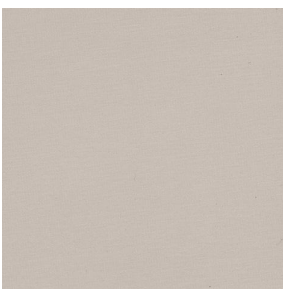
OPALE 2 Aubergine 27



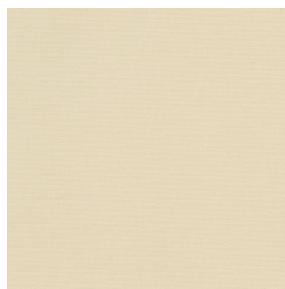
OPALE 2 Souris 40



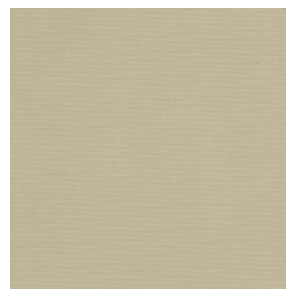
OPALE 2 Nacre 04



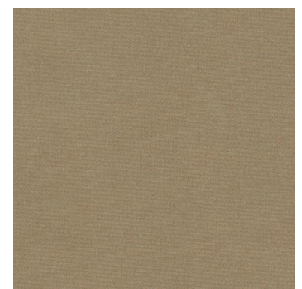
OPALE 2 Crème 02



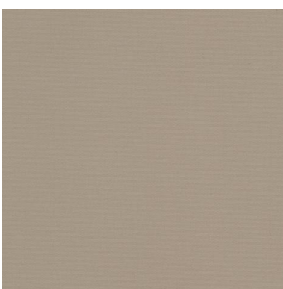
OPALE 2 Sable 67



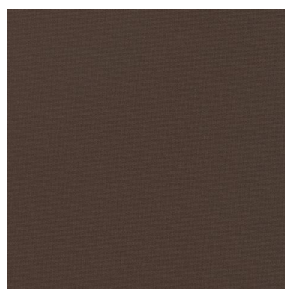
OPALE 2 Beige 63



OPALE 2 Brun 23



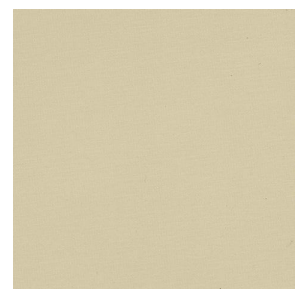
OPALE 2 Mastic 48



OPALE 2 Moka 12



OPALE 2 Marine 25



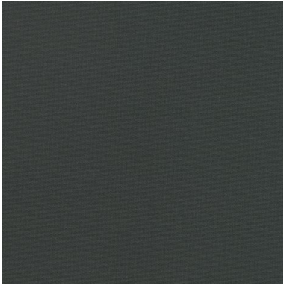
OPALE 2 Paille 06

drapilux
By Sotexpro

DRAPILUX GmbH - Hafenstraße 3, 77694 Kehl - Deutschland

Non-contractual photos and colors - Indicative fitting - Fitting may vary depending on support selected

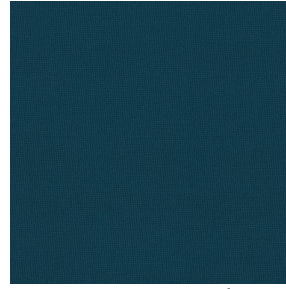
OPALE 2



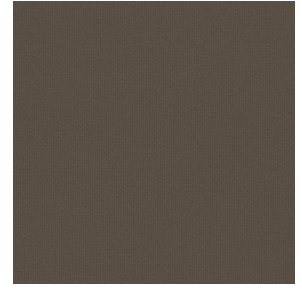
OPALE 2 Titanium 98



OPALE 2 Noir 36



OPALE 2 emeraude 88



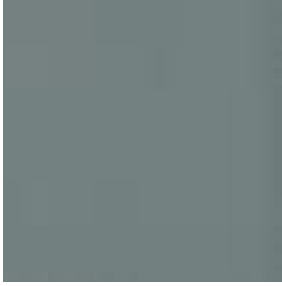
OPALE 2 taupe 95



OPALE 2 absinthe 132



OPALE 2 lin 11



OPALE 2 Anthracite 38

This plain fabric blocks out light very effectively and is available in a wide variety of colours.

Technical properties




Flame retardant

Applications Roman blinds - Roller blinds - Panel curtains - Curtains

Composition 100% polyester with white flocked acrylic backing

Weight 290 g/m² **Width** 140 cm

Fabric direction Standard Direction **Fitting** ↔ cm ↓ cm

Maintenance advice     

Minimum order 1 linear(s) meter(s)



Technical characteristics

| | | |
|-----------------|-------------------------------|-----------------|
| Flame retardant | M1 / IMO PASS | |
| Optical index | Light reflexion : | 72 % |
| | Light absorption : | 28 % |
| | Light transmission : | 0 % |
| Thermal index | Solar reflexion : | 65 % |
| | Solar absorption : | 35 % |
| | Solar transmission : | 0 % |
| | UV transmission : | 0 % |
| | Gtot : | Gt 35 % Fc 60 % |
| Resilience | Lightfastness (units Class/8) | 5 |
| | Breaking Elongation | |
| | Warp | 35 |
| | Weft | 11 |

drapilux
By Sotexpro

DRAPILUX GmbH - Hafenstraße 3, 77694 Kehl - Deutschland

Non-contractual photos and colors - Indicative fitting - Fitting may vary depending on support selected