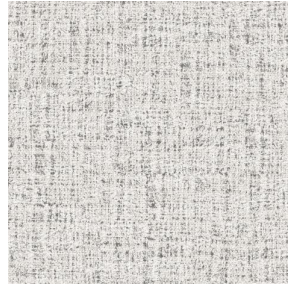


NOCTURNE MURA 2334



NOCTURNE MURA 2334
Minéral 157



NOCTURNE MURA 2334
Mastic 48



NOCTURNE MURA 2334
Dune 170



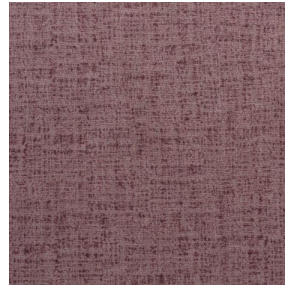
NOCTURNE MURA 2334
Olive 61



NOCTURNE MURA 2334
Savane 185



NOCTURNE MURA 2334
Glacier 43



NOCTURNE MURA 2334
Rose 129



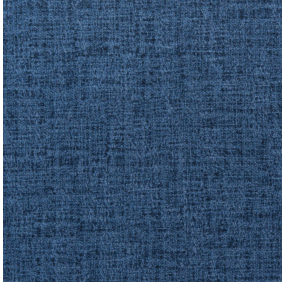
NOCTURNE MURA 2334
Grenat 56



NOCTURNE MURA 2334
Terre 107



NOCTURNE MURA 2334
Fusain 71



NOCTURNE MURA 2334

Saphir 106

False plain design printed on our blackout Nocturne, the Mura design is inspired by the asperities and shades of a wall aged by time as to create a subtle material effect.

Technical properties



Flame retardant



Thermal

Applications Roman blinds - Panel curtains - Lining - Curtains

Composition 100% polyester with white flocked acrylic backing

Weight 280 g/m² Width 280 cm

Fabric direction Room high or standard direction Fitting ↔ cm ↓ cm

Maintenance advice

Minimum order 1 linear(s) meter(s)



Technical characteristics

Flame retardant	M1 / BS 5867 TYPE C / B1 / IMO PASS		
Optical index	Light reflexion :	71 %	
	Light absorption :	29 %	
	Light transmission :	0 %	
Thermal index	Solar reflexion :	66 %	
	Solar absorption :	34 %	
	Solar transmission :	0 %	
	UV transmission :	0 %	
	Gtot :	Gt 35 % Fc 60 %	
Resilience	Lightfastness (units Class/8)	4	
	Pilling	3-4	
	Dimentional Stability (%)	Warp	-0.5
		Weft	0
	Martindale (Cycles)	40000	
	Breaking Elongation	Warp	19
		Weft	22
	Breaking load (daN)	Warp	37
		Weft	57



DRAPILUX GmbH - Hofenstraße 3, 77694 Kehl - Deutschland

Non-contractual photos and colors - Indicative fitting - Fitting may vary depending on support selected