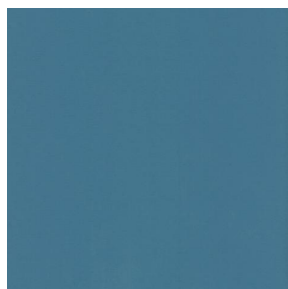


# NOCTURNE



NOCTURNE Océan 91



NOCTURNE Arctique 58



NOCTURNE Cyan 90



NOCTURNE Mousse 92



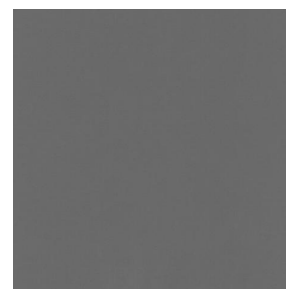
NOCTURNE Abricot 08



NOCTURNE Orange 15



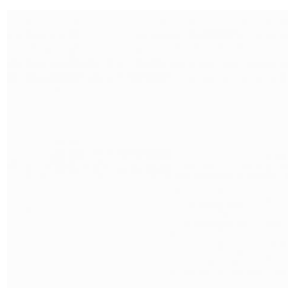
NOCTURNE Fuchsia 33



NOCTURNE Sienne 29



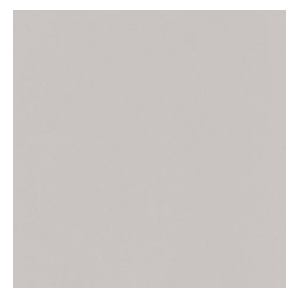
NOCTURNE Perle 96



NOCTURNE Grisé 03



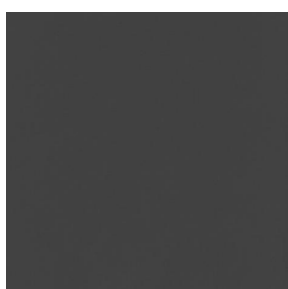
NOCTURNE Crème 02



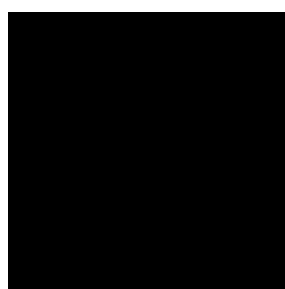
NOCTURNE Mastic 48



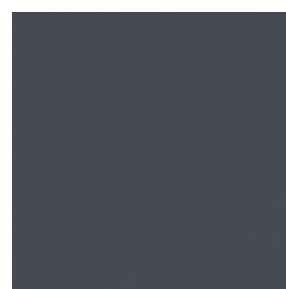
NOCTURNE Brun 23



NOCTURNE Taupe 95



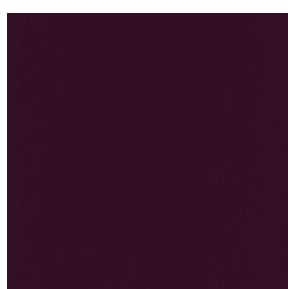
NOCTURNE Noir 10



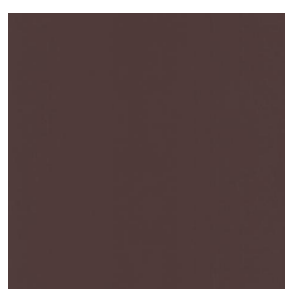
NOCTURNE anthracite  
38



NOCTURNE absinthe  
132



NOCTURNE aubergine  
27



NOCTURNE Chamois  
111



NOCTURNE Bordeaux  
04

**drapilux**  
By Sotexpro

DRAPILUX GmbH - Hafenstraße 3, 77694 Kehl - Deutschland

Non-contractual photos and colors - Indicative fitting - Fitting may vary depending on support selected

# NOCTURNE



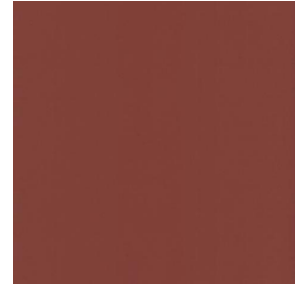
NOCTURNE Rubis 59



NOCTURNE Saumon  
143



NOCTURNE Or 94



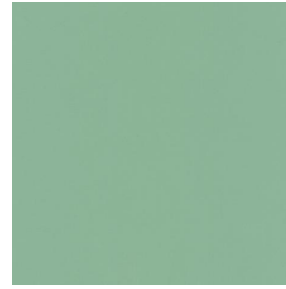
NOCTURNE Terre 107



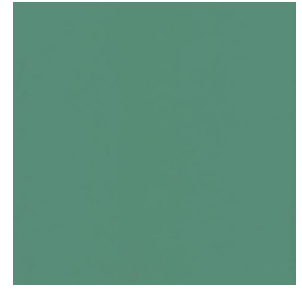
NOCTURNE Amande 75



NOCTURNE  
Bergamotte 121



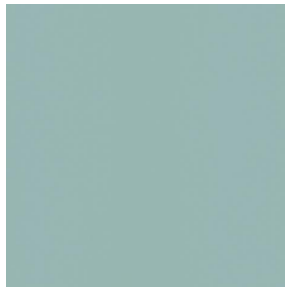
NOCTURNE Tilleul 103



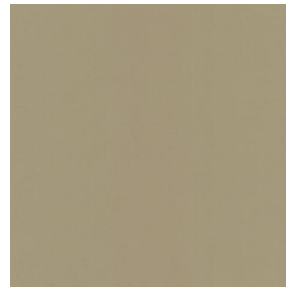
NOCTURNE Prairie 125



NOCTURNE Sapin 126



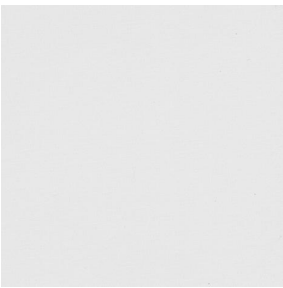
NOCTURNE Ecume 82



NOCTURNE Beige 63



NOCTURNE Mordoré  
133

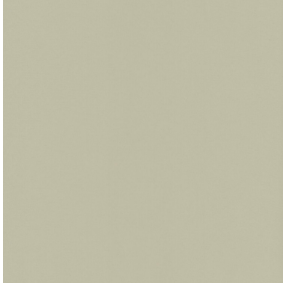


NOCTURNE BPI 00

**drapilux**  
By Sotexpro

DRAPILUX GmbH - Hafenstraße 3, 77694 Kehl - Deutschland

Non-contractual photos and colors - Indicative fitting - Fitting may vary depending on support selected



# NOCTURNE Galet 147

This blackout fabric is very efficient. It is available in a wide range of colors

## Technical properties



Flame retardant





Thermal

**Applications** Roman blinds - Panel curtains - Lining - Curtains

**Composition** 100% polyester with white flocked acrylic backing

**Weight** 280 g/m<sup>2</sup> **Width** 280 cm

**Fabric direction** Room high or standard direction **Fitting** ↔ cm ↓ cm

**Maintenance advice**     

**Minimum order** 1 linear(s) meter(s)

## Technical characteristics

Flame retardant	M1 / BS 5867 TYPE C / B1 / IMO PASS		
Optical index	Light reflexion :	71 %	
	Light absorption :	29 %	
	Light transmission :	0 %	
Thermal index	Solar reflexion :	66 %	
	Solar absorption :	34 %	
	Solar transmission :	0 %	
	UV transmission :	0 %	
	Gtot :	Gt 35 % Fc 60 %	
Resilience	Lightfastness (units Class/8)	4	
	Pilling	3-4	
	Dimentional Stability (%)	Warp	-0,5
		Weft	0
	Martindale (Cycles)	40000	
	Breaking Elongation	Warp	19
		Weft	22
	Breaking load (daN)	Warp	37
		Weft	57

**drapilux**  
By Sotexpro

DRAPILUX GmbH - Hofenstraße 3, 77694 Kehl - Deutschland

Non-contractual photos and colors - Indicative fitting - Fitting may vary depending on supports selected