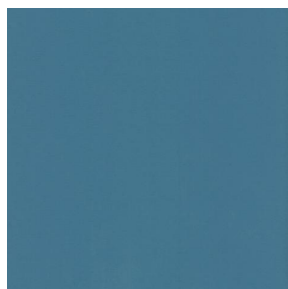


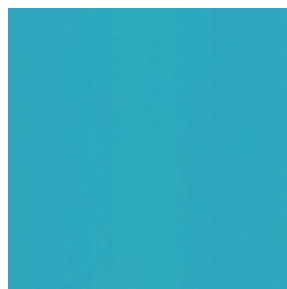
NOCTURNE



NOCTURNE Océan 91



NOCTURNE Arctique 58



NOCTURNE Cyan 90



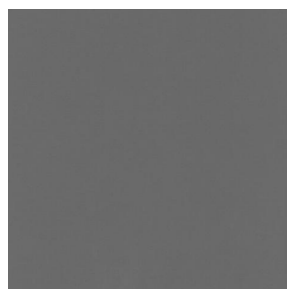
NOCTURNE Mousse 92



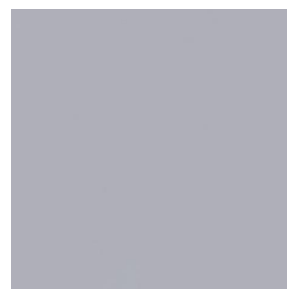
NOCTURNE Abricot 08



NOCTURNE Orange 15



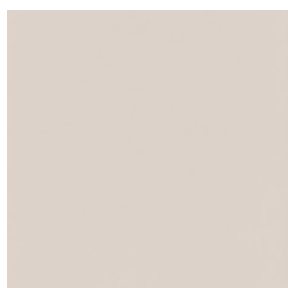
NOCTURNE Sienne 29



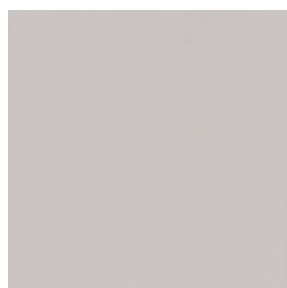
NOCTURNE Perle 96



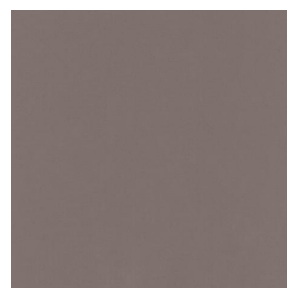
NOCTURNE Gris  03



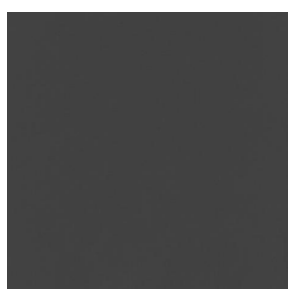
NOCTURNE Cr me 02



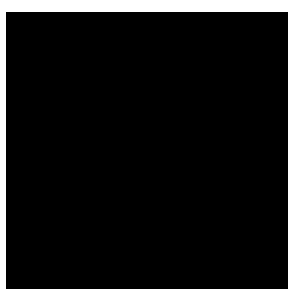
NOCTURNE Mastic 48



NOCTURNE Brun 23



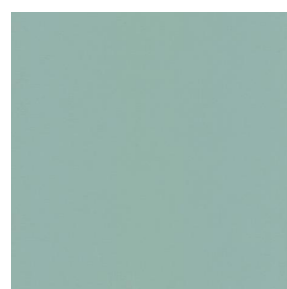
NOCTURNE Taupe 95



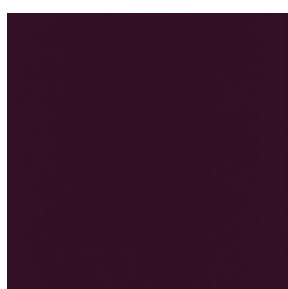
NOCTURNE Noir 10



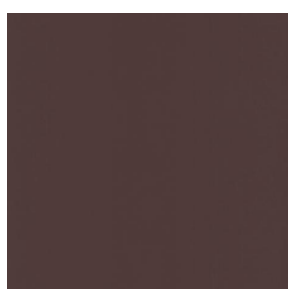
NOCTURNE anthracite
38



NOCTURNE absinthe
132



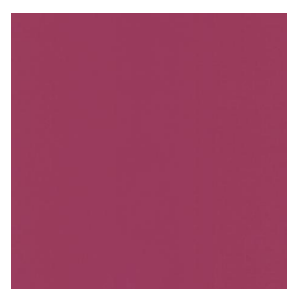
NOCTURNE aubergine
27



NOCTURNE Chamois
111



NOCTURNE Bordeaux
04



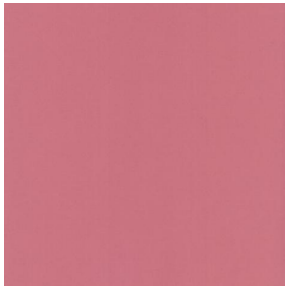
NOCTURNE Rubis 59

drapilux
By Sotexpro

DRAPILUX GmbH - Hafenstra e 3, 77694 Kehl - Deutschland

Non-contractual photos and colors - Indicative fitting - Fitting may vary depending on support selected

NOCTURNE



NOCTURNE Saumon
143



NOCTURNE Or 94



NOCTURNE Terre 107



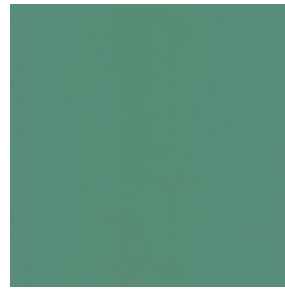
NOCTURNE Amande 75



NOCTURNE
Bergamotte 121



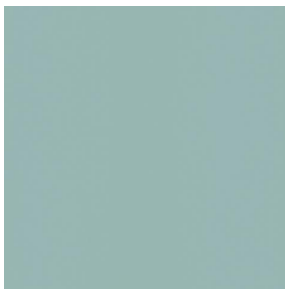
NOCTURNE Tilleul 103



NOCTURNE Prairie 125



NOCTURNE Sapin 126



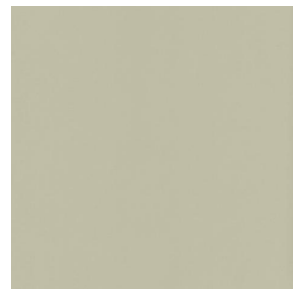
NOCTURNE Ecume 82



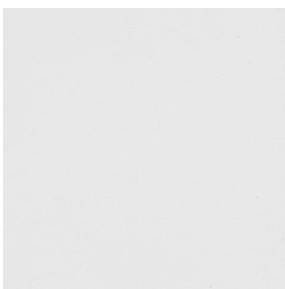
NOCTURNE Beige 63



NOCTURNE Mordoré
133



NOCTURNE Galet 147



NOCTURNE BPI 00

drapilux
By Sotexpro

DRAPILUX GmbH - Hafenstraße 3, 77694 Kehl - Deutschland

Non-contractual photos and colors - Indicative fitting - Fitting may vary depending on support selected



NOCTURNE Fuchsia 33

This plain fabric blocks out light very effectively and is available in a wide variety of colours.

Technical properties



Flame retardant



Thermal

Applications Roman blinds - Panel curtains - Lining - Curtains

Composition 100% polyester with white flocked acrylic backing

Weight 280 g/m² **Width** 280 cm

Fabric direction Room high or standard direction **Fitting** ↔ cm ↓ cm

Maintenance advice     

Minimum order 1 linear(s) meter(s)

Technical characteristics

Flame retardant	M1 / BS 5867 TYPE C / B1 / IMO PASS		
Optical index	Light reflexion :	71 %	
	Light absorption :	29 %	
	Light transmission :	0 %	
Thermal index	Solar reflexion :	66 %	
	Solar absorption :	34 %	
	Solar transmission :	0 %	
	UV transmission :	0 %	
	Gtot :	Gt 35 % Fc 60 %	
Resilience	Lightfastness (units Class/8)	5	
	Pilling	3-4	
	Dimentional Stability (%)	Warp	-0,5
		Weft	0
	Martindale (Cycles)	40000	
	Breaking Elongation	Warp	19
		Weft	22
	Breaking load (daN)	Warp	37
		Weft	57

drapilux
By Sotexpro

DRAPILUX GmbH - Hofenstraße 3, 77694 Kehl - Deutschland

Non-contractual photos and colors - Indicative fitting - Fitting may vary depending on supports selected