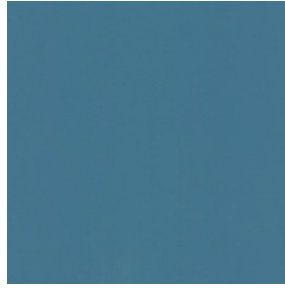


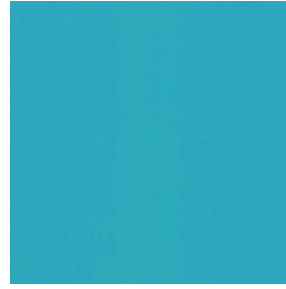
# NOCTURNE



NOCTURNE Océan 91



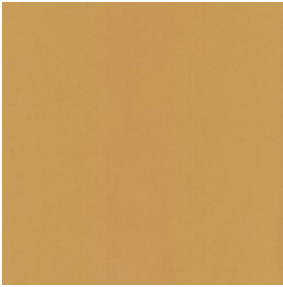
NOCTURNE Arctique 58



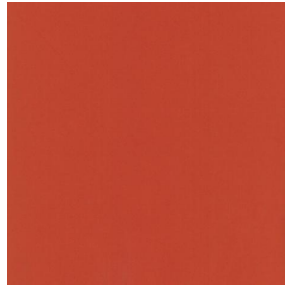
NOCTURNE Cyan 90



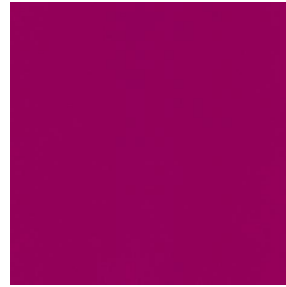
NOCTURNE Mousse 92



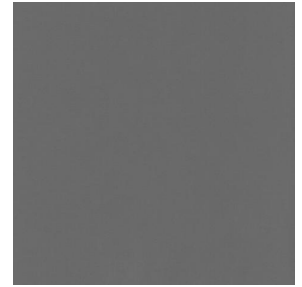
NOCTURNE Abricot 08



NOCTURNE Orange 15



NOCTURNE Fuchsia 33



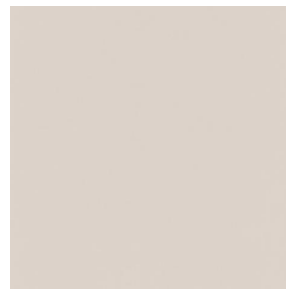
NOCTURNE Sienne 29



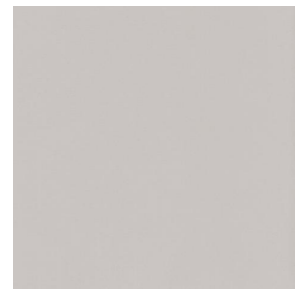
NOCTURNE Perle 96



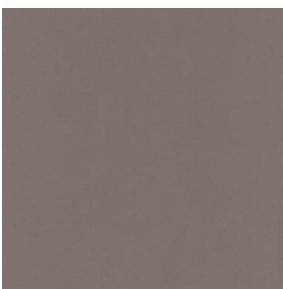
NOCTURNE Grisé 03



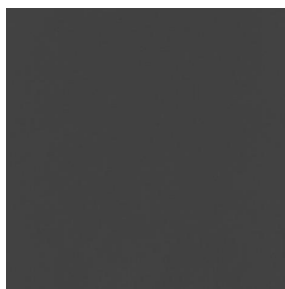
NOCTURNE Crème 02



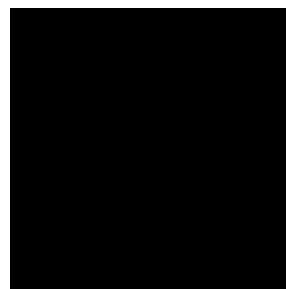
NOCTURNE Mastic 48



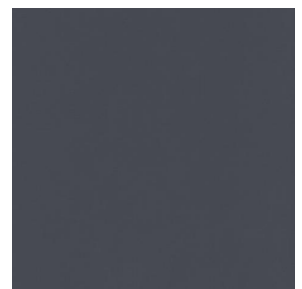
NOCTURNE Brun 23



NOCTURNE Taupe 95



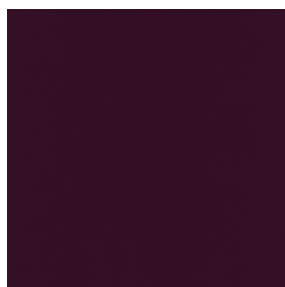
NOCTURNE Noir 10



NOCTURNE anthracite  
38



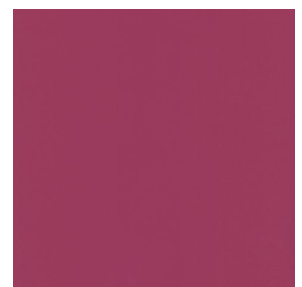
NOCTURNE absinthe  
132



NOCTURNE aubergine  
27



NOCTURNE Bordeaux  
04



NOCTURNE Rubis 59

**drapilux**  
By Sotexpro

DRAPILUX GmbH - Hofenstraße 3, 77694 Kehl - Deutschland

Non-contractual photos and colors - Indicative fitting - Fitting may vary depending on support selected

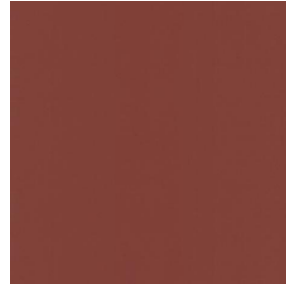
# NOCTURNE



NOCTURNE Saumon  
143



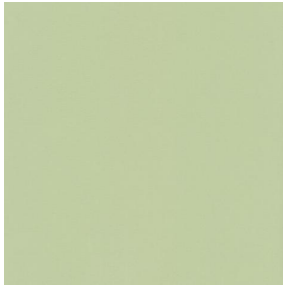
NOCTURNE Or 94



NOCTURNE Terre 107



NOCTURNE Amande 75



NOCTURNE  
Bergamotte 121



NOCTURNE Tilleul 103



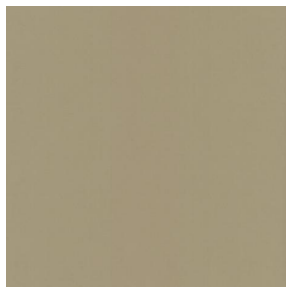
NOCTURNE Prairie 125



NOCTURNE Sapin 126



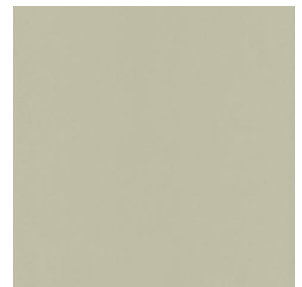
NOCTURNE Ecume 82



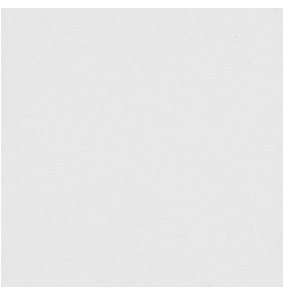
NOCTURNE Beige 63



NOCTURNE Mordoré  
133



NOCTURNE Galet 147

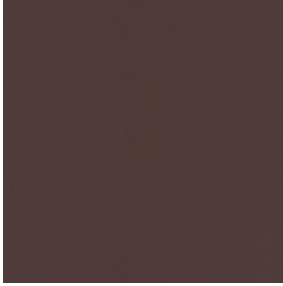


NOCTURNE BPI 00

**drapilux**  
By Sotexpro

DRAPILUX GmbH - Hafenstraße 3, 77694 Kehl - Deutschland

Non-contractual photos and colors - Indicative fitting - Fitting may vary depending on support selected



# NOCTURNE Chamois 111

This plain fabric blocks out light very effectively and is available in a wide variety of colours.

## Technical properties



Flame retardant



Thermal

**Applications** Roman blinds - Panel curtains - Lining - Curtains

**Composition** 100% polyester with white flocked acrylic backing

**Weight** 280 g/m<sup>2</sup> **Width** 280 cm

**Fabric direction** Room high or standard direction **Fitting** ↔ cm ↓ cm

**Maintenance advice**     

**Minimum order** 1 linear(s) meter(s)

## Technical characteristics

Flame retardant	M1 / BS 5867 TYPE C / B1 / IMO PASS		
Optical index	Light reflexion :	71 %	
	Light absorption :	29 %	
	Light transmission :	0 %	
Thermal index	Solar reflexion :	66 %	
	Solar absorption :	34 %	
	Solar transmission :	0 %	
	UV transmission :	0 %	
	Gtot :	Gt 35 % Fc 60 %	
Resilience	Lightfastness (units Class/8)	4	
	Pilling	3-4	
	Dimentional Stability (%)	Warp	-0.5
		Weft	0
	Martindale (Cycles)	40000	
	Breaking Elongation	Warp	19
		Weft	22
	Breaking load (daN)	Warp	37
		Weft	57

**drapilux**  
By Sotexpro

DRAPILUX GmbH - Hofenstraße 3, 77694 Kehl - Deutschland

Non-contractual photos and colors - Indicative fitting - Fitting may vary depending on supports selected