

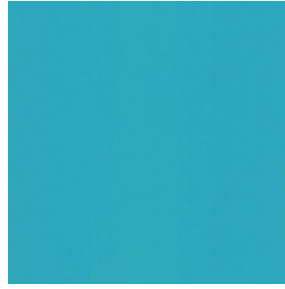
NOCTURNE



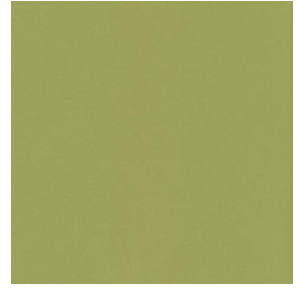
NOCTURNE Océan 91



NOCTURNE Arctique 58



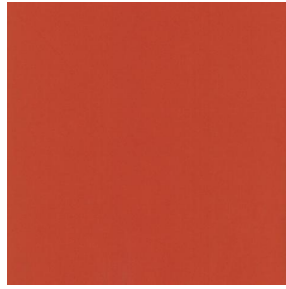
NOCTURNE Cyan 90



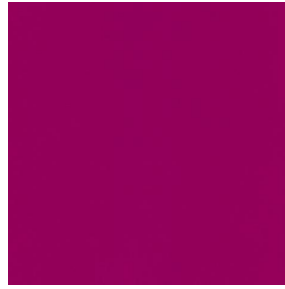
NOCTURNE Mousse 92



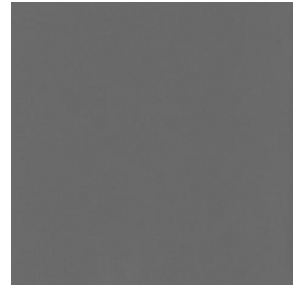
NOCTURNE Abricot 08



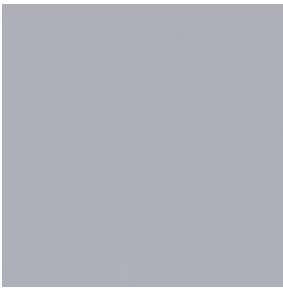
NOCTURNE Orange 15



NOCTURNE Fuchsia 33



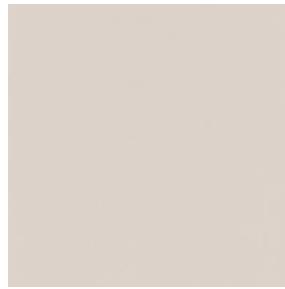
NOCTURNE Sienne 29



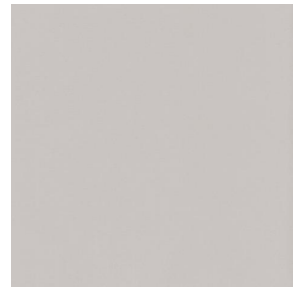
NOCTURNE Perle 96



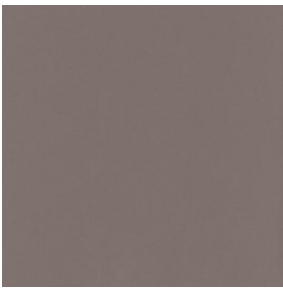
NOCTURNE Grisé 03



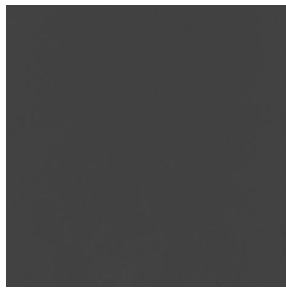
NOCTURNE Crème 02



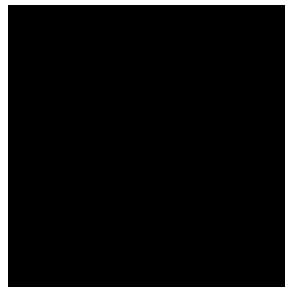
NOCTURNE Mastic 48



NOCTURNE Brun 23



NOCTURNE Taupe 95



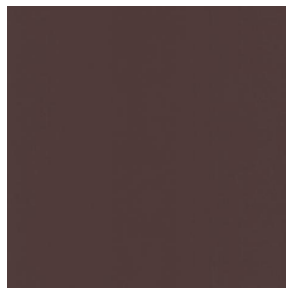
NOCTURNE Noir 10



NOCTURNE anthracite
38



NOCTURNE absinthe
132



NOCTURNE Chamois
111



NOCTURNE Bordeaux
04



NOCTURNE Rubis 59

drapilux
By Sotexpro

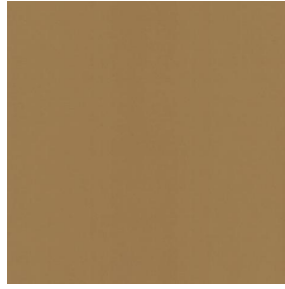
DRAPILUX GmbH - Hafenstraße 3, 77694 Kehl - Deutschland

Non-contractual photos and colors - Indicative fitting - Fitting may vary depending on support selected

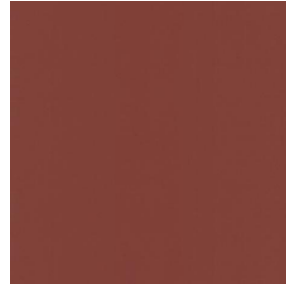
NOCTURNE



NOCTURNE Saumon
143



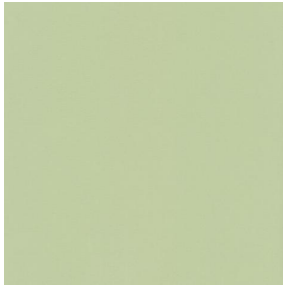
NOCTURNE Or 94



NOCTURNE Terre 107



NOCTURNE Amande 75



NOCTURNE
Bergamotte 121



NOCTURNE Tilleul 103



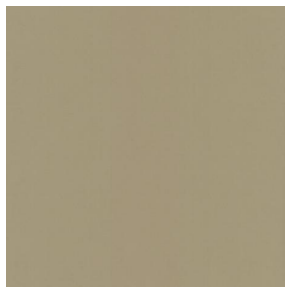
NOCTURNE Prairie 125



NOCTURNE Sapin 126



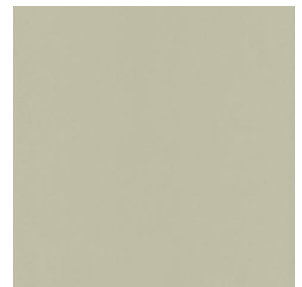
NOCTURNE Ecume 82



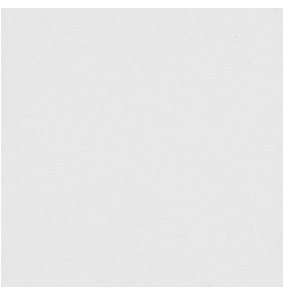
NOCTURNE Beige 63



NOCTURNE Mordoré
133



NOCTURNE Galet 147



NOCTURNE BPI 00

drapilux
By Sotexpro

DRAPILUX GmbH - Hafenstraße 3, 77694 Kehl - Deutschland

Non-contractual photos and colors - Indicative fitting - Fitting may vary depending on support selected



NOCTURNE aubergine 27

This plain fabric blocks out light very effectively and is available in a wide variety of colours.

Technical properties



Flame retardant



Thermal

Applications Roman blinds - Panel curtains - Lining - Curtains

Composition 100% polyester with white flocked acrylic backing

Weight 280 g/m² **Width** 280 cm

Fabric direction Room high or standard direction **Fitting** ↔ cm ↓ cm

Maintenance advice     

Minimum order 1 linear(s) meter(s)

Technical characteristics

Flame retardant	M1 / BS 5867 TYPE C / B1 / IMO PASS		
Optical index	Light reflexion :	71 %	
	Light absorption :	29 %	
	Light transmission :	0 %	
Thermal index	Solar reflexion :	66 %	
	Solar absorption :	34 %	
	Solar transmission :	0 %	
	UV transmission :	0 %	
	Gtot :	Gt 35 % Fc 60 %	
Resilience	Lightfastness (units Class/8)	4	
	Pilling	3-4	
	Dimentional Stability (%)	Warp	-0,5
		Weft	0
	Martindale (Cycles)	40000	
	Breaking Elongation	Warp	19
		Weft	22
	Breaking load (daN)	Warp	37
		Weft	57

drapilux
By Sotexpro

DRAPILUX GmbH - Hofenstraße 3, 77694 Kehl - Deutschland

Non-contractual photos and colors - Indicative fitting - Fitting may vary depending on supports selected